



### HSE – Break-glass unit

- HSE – main control panel
- HSE-N – secondary control panel
- HSE – main control panel with buzzer
- BUS HSE – main control panel with BUS
- Frame – for flush mounting

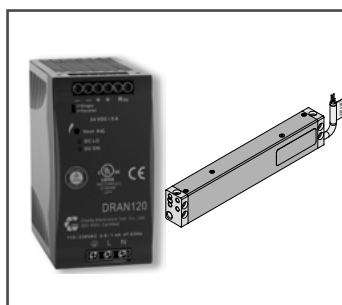
[To the product](#)



### Automatic detector

- Optical BUS smoke detector
- Optical smoke detector
- FAS Interface-Module
- Drive line end module
- Heat sensitive fire detector
- Heat sensitive detector clip 70°C

[To the product](#)



### Power supply

- NT-DRA240-10 – Power supply 230 V AC / 24 V DC, 5 A
- NT-DRA240-10 – Power supply 230 V AC / 24 V DC, 10 A
- NT-DRA480-20 – Power supply 230 V AC / 24 V DC, 20 A
- External Power Supply Laser Sensor

[To the product](#)



### Accessories for HSE (Break-glass unit)

- HSE-Empty Housing - Break-glass unit
- Key for plastic Break-glass unit
- Key for aluminium Break-glass unit
- Replacement glass panes for Break-glass unit
- Circuit board for Break-glass unit - ABS
- Circuit board for Break-glass unit

[To the product](#)

### ORDER DATA

Part.-No.

#### HSE – Break-glass unit main control panel

**Application:** Break-glass unit with indicators for manual activation of the Emergency OPEN function and the CLOSE function of a SHEV group via the detector lines of a SHEV Control Unit.



#### TECHNICAL DATA (Rated values)

Operating voltage: 24 V DC  
 Ambient temperature range: -5°C ... +40°C  
 Dimensions (WxHxD): 130 x 130 x 32 mm  
 Connections: Spring terminals, 0,5 mm<sup>2</sup> (rigid wire)  
 Protection rating: IP30  
 Display: Emergency OPEN, power, fault  
 Control elements: Button for Emergency OPEN / Button for CLOSE

#### Feature/Equipment

- Lockable, glazed door (including key)
- **Connection to the detector line input**
- **The termination resistance is activated or deactivated using a DIP switch**

**NEW**

#### VERSIONS

HSE orange	Aluminium	(similar to RAL 2011)	<b>528400</b>		
HSE red	Aluminium	(similar to RAL 3000)	<b>528401</b>		
HSE yellow	Aluminium	(similar to RAL 1018)	<b>528402</b>		
HSE blue	Aluminium	(similar to RAL 5015)	<b>528403</b>		
HSE grey	Aluminium	(similar to RAL 7035)	<b>528404</b>		

#### HSE – Break-glass unit main control panel

**Application:** Break-glass unit with indicators for manual activation of the Emergency OPEN function and the CLOSE function of a SHEV group via the detector lines of a SHEV Control Unit.



#### TECHNICAL DATA (Rated values)

Operating voltage: 24 V DC  
 Ambient temperature range: -5°C ... + 40°C  
 Housing: **Surface mounting, plastic (ABS)**  
 Dimensions (WxHxD): 130 x 130 x 32 mm  
 Connections: Screw terminal, 1,0 mm<sup>2</sup> (rigid wire)  
 Protection rating: IP30  
 Display: Emergency OPEN, power, fault  
 Control elements: Button for Emergency OPEN / Button for CLOSE

**ABS**

#### Feature/Equipment

- Lockable, glazed door (including key)
- **Connection to the detector line input**
- HSE orange: **VdS certification no. G 501006**

**DISCONTINUED PRODUCT**

#### VERSIONS

HSE red	(similar to RAL 3000)	<b>528691</b>		
HSE yellow	(similar to RAL 1018)	<b>528692</b>		
HSE grey	(similar to RAL 7035)	<b>528693</b>		
HSE blue	(similar to RAL 5015)	<b>528694</b>		
HSE orange	(similar to RAL 2011)	<b>528695</b>		

ORDER DATA

Part.-No.

HSE-N – Break-glass unit secondary control panel

**Application:** Break-glass unit with indicators for manual activation of the Emergency OPEN function of a SHEV group via the detector lines of a SHEV Control Unit



**TECHNICAL DATA (Rated values)**

Operating voltage: 24 V DC  
 Ambient temperature range: -5°C ... +40°C  
 Dimensions (WxHxD): 130 x 130 x 32 mm  
 Connections: Spring terminals, 0,5 mm<sup>2</sup> (rigid wire)  
 Protection rating: IP30  
 Display: Emergency OPEN  
 Control elements: Button for Emergency OPEN

**Feature/Equipment**

- Lockable, glazed door (including key)
- **Connection to the detector line input**
- **The termination resistance is activated or deactivated using a DIP switch**

**NEW**

**VERSIONS**

HSE-N orange	Aluminium	(similar to RAL 2011)	528410		
HSE-N red	Aluminium	(similar to RAL 3000)	528411		
HSE-N yellow	Aluminium	(similar to RAL 1018)	528412		
HSE-N blue	Aluminium	(similar to RAL 5015)	528413		
HSE-N grey	Aluminium	(similar to RAL 7035)	528414		

HSE-N – Break-glass unit secondary control panel

**Application:** Break-glass unit with indicators for manual activation of the Emergency OPEN function of a SHEV group via the detector lines of a SHEV Control Unit



**TECHNICAL DATA (Rated values)**

Operating voltage: 24 V DC  
 Ambient temperature range: -5°C ... + 40°C  
 Housing: **Surface mounting, plastic (ABS)**  
 Dimensions (WxHxD): 130 x 130 x 32 mm  
 Connections: Screw terminal, 1,0 mm<sup>2</sup> (rigid wire)  
 Protection rating: IP30  
 Display: Emergency OPEN  
 Control elements: Button for Emergency OPEN

**ABS**

**Feature/Equipment**

- Lockable, glazed door (including key)
- **Connection to the detector line input**
- HSE orange: **VdS certification no. G 501006**

**DISCONTINUED PRODUCT**

**VERSIONS**

HSE-N red	(similar to RAL 3000)	525001		
HSE-N yellow	(similar to RAL 1018)	525002		
HSE-N grey	(similar to RAL 7035)	525003		
HSE-N blue	(similar to RAL 5015)	525004		
HSE-N orange	(similar to RAL 2011)	525005		

### ORDER DATA

Part.-No.

#### HSE – Break-glass unit main control panel - buzzer

**Application:** Break-glass unit with built-in buzzer and indicators and buttons for the manual activation of the Emergency OPEN function and Emergency CLOSE function of a SHEV group via the detector lines of a SHEV Control Unit.  
Signal for faults and alarm selectable via DIP switches.



#### TECHNICAL DATA (Rated values)

Operating voltage: 24 V DC  
 Ambient temperature range: -5°C ... +40°C  
 Dimensions (WxHxD): 130 x 130 x 32 mm  
 Connections: Spring terminals, 0,5 mm<sup>2</sup> (rigid wire)  
 Protection rating: IP30  
 Display: Emergency OPEN, power, fault  
 Control elements: Button for Emergency OPEN / Button for CLOSE

**SUMMER**

#### Feature/Equipment

- Built-in buzzer
- Lockable, glazed door (including key)
- **Connection to the detector line input**
- **The termination resistance is activated or deactivated using a DIP switch**
- **Signal for faults and alarm selectable via DIP switches.**

**NEW**

#### VERSIONS

HSE-Summer orange	Aluminium	(similar to RAL 2011)	528420		
HSE-Summer red	Aluminium	(similar to RAL 3000)	528421		
HSE-Summer yellow	Aluminium	(similar to RAL 1018)	528422		
HSE-Summer blue	Aluminium	(similar to RAL 5015)	528423		
HSE-Summer grey	Aluminium	(similar to RAL 7035)	528424		

#### HSE – Break-glass unit main control panel - buzzer

**Application:** Break-glass unit with built-in buzzer and indicators and buttons for the manual activation of the Emergency OPEN function and Emergency CLOSE function of a SHEV group via the detector lines of a SHEV Control Unit.



#### TECHNICAL DATA (Rated values)

Operating voltage: 24 V DC  
 Ambient temperature range: -5°C ... + 40°C  
 Housing: Surface mounting, plastic (ABS)  
 Dimensions (WxHxD): 130 x 130 x 32 mm  
 Connections: Screw terminal, 1,0 mm<sup>2</sup> (rigid wire)  
 Protection rating: IP30  
 Display: Emergency OPEN, power, fault  
 Control elements: Button for Emergency OPEN / Button for CLOSE

**ABS**

**SUMMER**

#### Feature/Equipment

- Built-in buzzer
- Lockable, glazed door (including key)
- **Connection to the detector line input**
- Settings via DIP switch: Warning sound in case of fault and / or SHEV

**DISCONTINUED PRODUCT**

#### VERSIONS

HSE red	(similar to RAL 3000)	528711		
HSE yellow	(similar to RAL 1018)	528712		
HSE grey	(similar to RAL 7035)	528713		
HSE blue	(similar to RAL 5015)	528714		
HSE orange	(similar to RAL 2011)	528715		

ORDER DATA

Part.-No.

HSE – Break-glass unit main control panel

**Application:** Break-glass unit with indicators and buttons for the manual activation of the Emergency OPEN function and CLOSE function of a SHEV group, for connection in the BUS line of a control unit.



**TECHNICAL DATA (Rated values)**

Operating voltage:	24 V DC	<b>ABS</b>
Ambient temperature range:	-5°C ... + 40°C	
Housing:	<b>Surface mounting, plastic (ABS)</b>	<b>BUS</b>
Dimensions (WxHxD):	130 x 130 x 32 mm	
Connections:	BUS terminal, 2 x 0,8 mm <sup>2</sup>	
Protection rating:	IP30	
Display:	Emergency OPEN, power, fault	
Control elements:	Button for Emergency OPEN / Button for CLOSE	
Connection possibility:	Ventilation push button - input Screw terminal, 1,0 mm <sup>2</sup> (rigid wire)	

**Feature/Equipment**

- Lockable, glazed door (including key)
- Connection to the detector line input

**DISCONTINUED PRODUCT**

**VERSIONS**

HSE red	(similar to RAL 3000)	528491		
HSE yellow	(similar to RAL 1018)	528492		
HSE grey	(similar to RAL 7035)	528493		
HSE blue	(similar to RAL 5015)	528494		
HSE orange	(similar to RAL 2011)	528495		

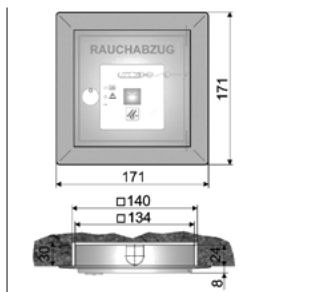
### ORDER DATA

Part.-No.

**HSE – Frame for flush mounting**

**528015**

**Application:** Flush mounting of break-glass units.



#### TECHNICAL DATA

Housing:  
Dimensions (WxHxD):  
Surface:  
Installation Dimensions:

**Surface mounting, steel sheet**  
171 x 171 x 26 mm  
powder-coated in light grey w/o structure  
140 x 140 x 30 mm

**ALU**

#### Feature/Equipment

- Suitable for break-glass units (130 x 130 x 32 mm) - until 2023 only for HSE in version „ABS“ (plastic housing)  
- from 2023 for all HSE

ORDER DATA

	Part.-No.
<b>Optical BUS-smoke detector</b>	<b>531530</b>
<b>Application:</b> BUS-smoke detector for the automatic early detection of fire for controlling of the EMERGENCY OPEN function via the BUS detector line of the <b>EMB 8000+</b> , with smoke generation in the monitored area.	



**TECHNICAL DATA (Rated values)**

Measuring element:	photo electric / scattered light principle
Operating voltage:	24 V DC via BUS
Standby current:	< 110 µA
Housing:	Surface mounting, plastic (ABS), signal white (similar to RAL 9003)
Dimensions (WxHxD):	Ø120 x 60 mm
Connections:	Screw terminals 1,0 mm <sup>2</sup> (rigid wire)
Protection rating:	IP30
Ambient temperature range:	-10°C ... +55°C
Display:	Alarm LED

**BUS**

**Feature/Equipment**

- Fire algorithms for avoiding false alarms, automatic alarm threshold tracking
- According to EN 54-7, Connection to the **BUS detector line input**
- **VdS certification no. G 209219**

<b>Optical smoke detector</b>	<b>531520</b>
<b>Application:</b> Smoke detector for the automatic early detection of fire for controlling of the EMERGENCY OPEN function via a detector line of SHEV control units, with smoke generation in the monitored area.	



**TECHNICAL DATA (Rated values)**

Measuring element:	photo electric / scattered light principle
Operating voltage:	8,5 – 33 V DC
Standby current:	< 100 µA
Housing:	Surface mounting, plastic (ABS), pearl white
Dimensions (WxHxD):	Ø100 x 50 mm
Connections:	Screw terminals 1,0 mm <sup>2</sup> (rigid wire)
Protection rating:	IP23D
Display:	Alarm LED

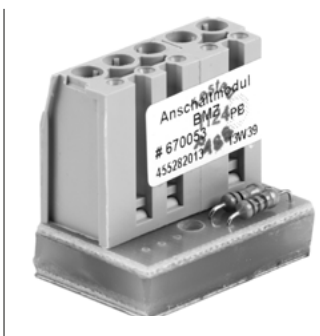
**Feature/Equipment**

- Fire algorithms for avoiding false alarms, automatic alarm threshold tracking
- According to EN 54-7, connection to the **detector line input**

**ACCESSORIES**

Ball protection (chromed steel grid) e.g. use in sporthalls	<b>513546</b>
---	---------------

<b>FAS Interface-Module</b>	<b>670053</b>
<b>Application:</b> Module for the automatic control of the emergency open function via volt free contact of a fire alarm system.	



**TECHNICAL DATA (Rated values)**

Operating voltage:	24 V DC
Standby consumption:	<10 mA
Ambient temperature range:	0 ... +40 °C
Housing:	w/o, equipped circuit board
Dimensions (WxHxD):	27 x 19 x 13 mm
Connections:	Screw terminal 1,5 mm <sup>2</sup> (rigid wire)
FAS contact:	Normal open switch at alarm status

**Feature/Equipment:**

- For connection to **detector line input** of SHEV control units, with line monitoring between control unit and module

### ORDER DATA

		Part.-No.	
<b>Drive line end module</b>		<b>670052</b>	
<b>Application:</b> For installation in the last or only junction box for the line monitoring of drive line.			



#### TECHNICAL DATA (Rated values)

Operating voltage:	24 V DC (+/-5%)
Standby consumption:	<10 mA
Ambient temperature range:	0 ... +70 °C
Housing:	w/o, equipped circuit board
Dimensions (WxHxD):	27 x 19 x 13 mm
Connections:	3 single cores

#### Feature/Equipment

- For connection into **drive line** of SHEV control units

<b>Heat sensitive fire detector</b>				
<b>Application:</b> Heat detector for the automatic control of the emergency open function of a SHEV group of a SHEV control unit.				



#### TECHNICAL DATA (Rated values)

Measuring element:	Bimetal switch
Operating voltage:	24 V DC
Contact load:	48 V DC / 0,5 A
Standby current:	< 10 mA
Housing:	Surface mounting, plastic (ABS), white
Dimensions (WxHxD):	Ø56 x 77 mm
Connections:	Screw terminals 1,0 mm² (rigid wire)
Protection rating:	IP20

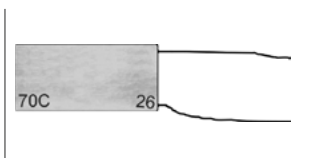
#### Feature/Equipment

- With base for surface mounting

#### VERSIONS

Connection in detector line	NO switch 70°C	<b>533205</b>		
Connection in drive line	NC switch 70°C	<b>533200</b>		

<b>Heat sensitive detector clip 70°C</b>		<b>533201</b>		
<b>Application:</b> Heat detector for controlling of the emergency open function of a SHEV group, for connection in the drive line.				



Measuring element:	Bimetal switch with ceramic housing
Operating voltage:	24 V DC
Contact type:	<b>NC switch</b> at 70°C
Contact load:	48 V DC / 0,5 A
Standby current:	< 10 mA

#### Feature/Equipment

- No housing, connection in the **monitoring line of the drive output** of a SHEV control unit



## ORDER DATA

Part.-No.

**NT-DRAN120-5 – Power supply 230 V AC / 24 V DC, 5 A****680005**

**Application:** Switching power supply for fixing on 35-mm mounting rail or external power supply of the ventilation modules LZA and LZH.

**TECHNICAL DATA**

Operating voltage: 230 V AC (195 – 253 V AC, 50/60 Hz)  
 Power consumption max. : 322 W  
 Output voltage: 24 V DC (20 – 28 V DC / 0,5 Vpp)  
 Output current: **5 A**  
 Ambient temperature range: -5°C ... + 40°C  
 Housing: for fixing on 35-mm mounting rail  
 Dimensions (WxHxD): 65 x 95 x 123 mm

**Feature/Equipment**

- For installation in a control cabinet or comparable housing.

**NT-DRA240-10 – Power supply 230 V AC / 24 V DC, 10 A****680010**

**Application:** Switch mode power supply for power supply and control of drives 24 V DC for daily ventilation, with one ventilation line. Control in the OPEN / CLOSE direction via the 230 V AC mains voltage.

**TECHNICAL DATA**

Operating voltage: 230 V AC (195 - 253 V AC, 50/60 Hz)  
 Output voltage: 24 V DC (20 – 28 V DC / 0,5 Vpp)  
 Output current: **10 A**  
 Ambient temperature range: -5°C ... + 40°C  
 Housing: for fixing on 35-mm mounting rail  
 Dimensions (WxHxD): 125 x 84 x 124 mm

**Feature/Equipment**

- For installation in a control cabinet or comparable housing.

**NT-DRA480-20 – Power supply 230 V AC / 24 V DC, 20 A****680024**

**Application:** Switch mode power supply for power supply and control of drives 24 V DC for daily ventilation, with one ventilation line. Control in the OPEN / CLOSE direction via the 230 V AC mains voltage.

**TECHNICAL DATA**

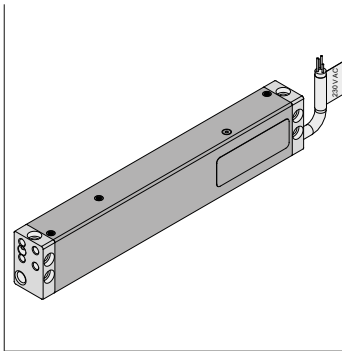
Operating voltage: 230 V AC (195 - 253 V AC, 50/60 Hz)  
 Output voltage: 24 V DC (20 – 28 V DC / 0,5 Vpp)  
 Output current: **20 A**  
 Ambient temperature range: -5°C ... + 40°C  
 Housing: for fixing on 35-mm mounting rail  
 Dimensions (WxHxD): 125 x 176 x 124 mm

**Feature/Equipment**

- For installation in a control cabinet or comparable housing.

### ORDER DATA

		Part.-No.	
<b>External Power Supply Laser Sensor</b>		<b>680027</b>	
<b>Application:</b> External Power Supply NT-S-2 KS2/KSA - 230 V AC / 24 V DC factory installed in KS2 chain drive housing. For power supply and control of SKL3 flatscan and flat scan sensor.			



#### TECHNICAL DATA (Rated values)

Operating voltage:	230 V AC (195 – 253 V AC, 50/60 Hz)
Record measurement:	30 W
Output voltage:	24 V DC (20 – 28 V DC / 2 Vpp)
Output current:	2,0 A
Output:	1x drive line - 24 V DC / 2,0 A 1x continuous current - 24 V DC / 0,2 A
Connections:	24 V DC drive, up to max. 2,0 A 24 V DC continuous current, up to max. 0,2 A
Connection cable:	non-halogen, grey 6 x 0,75 mm <sup>2</sup> , length 3 meters maximum extendable to 25 meters in length
Housing:	Aluminium natural anodized
Dimensions (WxHxD):	41 x 26 x 230 mm
Connection terminals:	Screw terminals 1,0 mm <sup>2</sup> (rigid wire)
Protection rating:	IP 32

#### Feature/Equipment

- Factory installed in the housing of a KS2 chain drive.

## ORDER DATA

Part.-No.

HSE-Empty Housing - Break-glass unit

Application: HSE-Empty Housing with lockable, glazed door - including key.



## TECHNICAL DATA (Rated values)

Dimensions (WxHxD): 130 x 130 x 32 mm

New

## VERSIONS

HSE-Empty Housing orange	Aluminium	(similar to RAL 2011)	528480			
HSE-Empty Housing red	Aluminium	(similar to RAL 3000)	528481			
HSE-Empty Housing yellow	Aluminium	(similar to RAL 1018)	528482			
HSE-Empty Housing blue	Aluminium	(similar to RAL 5015)	528483			
HSE-Empty Housing grey	Aluminium	(similar to RAL 7035)	528484			

HSE-Empty Housing - Break-glass unit

Application: HSE-Empty Housing with lockable, glazed door - including key.



## TECHNICAL DATA (Rated values)

Housing: Surface mounting, plastic (ABS)

Dimensions (WxHxD): 130 x 130 x 32 mm

ABS

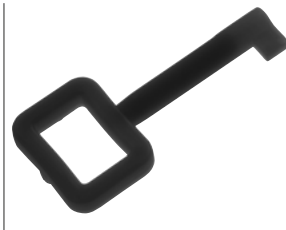
DISCONTINUED PRODUCT

## VERSIONS

HSE-Empty Housing red	(similar to RAL 3000)	528001			
HSE-Empty Housing yellow	(similar to RAL 1018)	528002			
HSE-Empty Housing grey	(similar to RAL 7035)	528003			
HSE-Empty Housing blue	(similar to RAL 5015)	528004			
HSE-Empty Housing orange	(similar to RAL 2011)	528009			

### ORDER DATA

		Part.-No.		
<b>Key for plastic Break-glass unit (HSE plastic button)</b>		<b>527007</b>		
<b>Application:</b>	The plastic Break-glass units (HSE plastic button) have a lockable door. The key is used to open or close this door.			



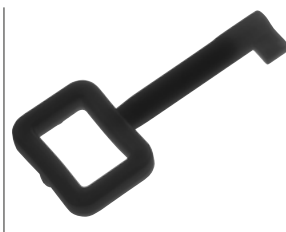
#### TECHNICAL DATA

Function:	for plastic Break-glass unit (HSE plastic button)
Material:	Polyamid PA 6.6
Colour:	white
Key:	1 piece

#### Feature/Equipment

- Suitable for all **AUMÜLLER** plastic Break-glass unit (HSE plastic buttons)

<b>Key for aluminium Break-glass unit (HSE aluminium button)</b>		<b>527008</b>		
<b>Application:</b>	The aluminium Break-glass units (HSE aluminium button) have a lockable door. The key is used to open or close this door.			



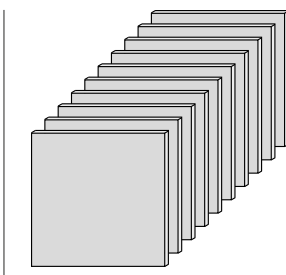
#### TECHNICAL DATA

Function:	for aluminium Break-glass unit (HSE aluminium button)
Material:	Metal
Type:	Schl-HM/10
Keys:	10 pieces

#### Feature/Equipment

- Suitable for all **AUMÜLLER** aluminium Break-glass unit (HSE aluminium buttons)

<b>Replacement glass panes for Break-glass unit (HSE button)</b>		<b>527002</b>		
<b>Application:</b>	Panels of glass for replacement on site.			



#### TECHNICAL DATA

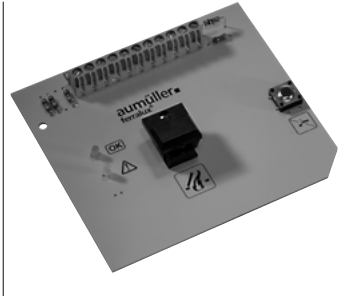
Dimensions (W x H x D):	80 x 80 x 0,7
Glass panes:	10 pieces

#### Feature/Equipment

- Suitable for all **AUMÜLLER** Break-glass unit (HSE buttons)

ORDER DATA

	Part.-No.			
<b>Circuit board for Break-glass unit ABS (HSE button ABS)</b>				
<b>Application:</b> Circuit board for Break-glass unit (HSE button) - with logo „Ferralux“. Can be exchanged on site - without subsequent processing.				



**TECHNICAL DATA**

Type:

**Ferralux DIN99-1 A-Z /A-B-S**, is equipped  
Installation in an ABS housing

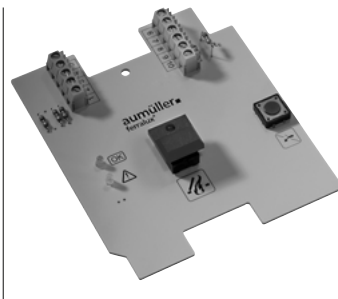
**ABS**

For housing type:

Plastic

<b>VERSIONS</b>				
<b>with certification VdS</b>		<b>528785</b>		
<b>without certification VdS</b>		<b>528784</b>		

<b>Circuit board for Break-glass unit (HSE button)</b>				
		<b>528782</b>		
<b>Application:</b> Circuit board for Break-glass unit (HSE button) - with logo „Ferralux“. Can be exchanged on site - without subsequent processing.				



**TECHNICAL DATA**

Type:

**Ferralux DIN AL4 orange**, is equipped  
Installation in an aluminum housing  
**VdS** similar version

**ALU**

For housing type:

Aluminium

For this product series, a Type III Environmental Product Declaration (EPD) was issued according to ISO 14025 and EN 15804.  
The LCA results of the different product types are listed at the end of this product catalogue.  
The EPD documents can be viewed or downloaded from our homepage [www.aumueller-gmbh.de](http://www.aumueller-gmbh.de).