

03.2023

# PRODUCT OVERVIEW CONTROLE UNITS



[www.aumueller-gmbh.de](http://www.aumueller-gmbh.de)

AUMÜLLER AUMATIC GMBH • Gemeindewald 11 • 86672 Thierhaupten  
Tel. +49 8271 8185-0 • Fax +49 8271 8185-250 • [info@aumueller-gmbh.de](mailto:info@aumueller-gmbh.de)

**1**

**SHEV – Compact  
Control Units**

to the  
chapter

**2**

**SHEV – Modular  
Control Units**

to the  
chapter

**3**

**Accessories for  
SHEV Control Units**

to the  
chapter

**4**

**Accessories for  
Control Units**

to the  
chapter

**5**

**Natural Ventilation  
Control Units**

to the  
chapter

**6**

**EPD Values**

to the  
chapter

Valid from 15.03.2023

## IMPORTANT NOTE

Although we have done everything we can to ensure that the date and information within this document is correct and up-to-date as possible, we cannot guarantee that there are not any errors. Be aware that the information and data contained in this document can be altered without prior and notice.

The contents of this document are copyright of **AUMÜLLER** Aumatic GmbH.

Distribution and reproduction of this document or the use and disclosure of its content is not authorised if no explicit consent is given.

All rights reserved.

The publication of this document supersedes all previous editions.

In pursuance of our policy of continuing product improvement, the equipment described in this publication is subject to changes without notification.

All prices quoted shall be in Euro and are Euro ex works excluding packaging costs and excluding statutory rate of value added tax. Orders with a net value of goods of less than 100 € cannot be processed economically and will therefore be subject to a minimum quantity surcharge of 20 €.

For offers, deliveries and performances our general terms and conditions shall apply exclusively.

By pasting this product list, previous editions become invalid.

**AUMÜLLER AUMATIC** GmbH  
Gemeindewald 11  
86672 Thierhaupten / Germany

Tel.: +49(0)8271-81 85 0  
Fax: +49(0)8271-81 85 250  
E-Mail: [info@aumueller-gmbh.de](mailto:info@aumueller-gmbh.de)  
Internet: [www.aumueller-gmbh.de](http://www.aumueller-gmbh.de)

LIST OF ABBREVIATIONS	
aP	Surface mounting
WxHxD	Width x Height x Depth
CAN	CAN-Bus
CM	Control Module
DIN	German Institute for Standardisation
DM	Drive Module
EN	European Standard
HS	Free space
LZ	Time of delivery
PG	Price group
PM	Power Module
net	Prices not discountable
RAL	Central European Colour Standard
RAS	Aspirating smoke detector
RM6	Relay Module
RWA	SHEV – smoke and heat exhaust ventilation
SM	Sensor Module
uP	Flash mounting
WM	Weather Module
WRG	Wind direction sensor

SCALE UNITS	
°C	Degree Celsius
A	Amps
Ah	Amp-hours
Kg	Kilogram
m	Metres
min	Minutes
mm	Millimeters
N	Newtons
s	Seconds
Pcs.	Pieces
V	Volts
PU	Packaging Units
Vpp	Residual ripple (Voltage Peak-Peak)
W	Watts

FIGURES	
€	Euro
AC	Alternating current (50Hz / 60Hz)
DC	Direct current
I	Electric current
L	Length
ME	Module space unit (1 ME = 23 mm)
NO	Normal open switch
NC	Normal close switch
P	Electric power
U	Electric voltage
Um	Change over switch





### General information about this product

- Product features EMB7300
- Software functions
- Application example of a complete system

[To the information](#)



### EMB7300 (2,5 A + 5 A) + accessories

- EMB7300 2,5 A 0101
- EMB7300 5 A 0101
- EMB7300 5 A 0102
- Flush mounting housing EMB7300 2,5 A / 5 A
- Accumulator holder

[To the product](#)



### EMB7300 (10 A + 20 A) + accessories

- EMB7300 10 A 0101
- EMB7300 10 A 0102
- EMB7300 10 A 0204
- EMB7300 20 A 0102
- EMB7300 20 A 0204
- Wall fixing brackets IP54

[To the product](#)



### Accessories for EMB7300

- WR-SET TYPE 7x/8x – Wind and Rain Sensor Set
- BI-K - KNX Interface LZ1 / LZ6 / EMB7300
- REL65
- 7xPSB
- USB-Cable
- Accumulators
- Software / License / Programming EMB7300
- Radio-HSE - Break-glass unit main control panel (plastic)
- Receiver plug-in card radio SHEV
- Radio Antenna
- Replacement board EMB7300 2,5 A / 5 A / 10 A / 20 A
- Key + Lock 1D9

[To the product](#)



### PRODUCT FEATURES EMB7300

- Controls 24 V DC drives for smoke and heat exhaust in case of fire and for natural ventilation
- Control panel compliant with prEN 12101-9 / ISO 21927-9
- Power supply compliant with EN 12101-10
- Low ripple voltage output (< 2 Vpp) - compatible with all common drives
- 1 SHEV-Group output with 1 (optional 2) monitored ventilation line(s)
- Removable terminals for easy connection of signal lines
- Connection of electric motors, compressed gas generator and retention magnets
- 2 detector line inputs with line monitoring to connect:
  - Manual break-glass units (HSE)
  - Automatic smoke and heat detectors
- 1 Ventilation line input (optionally 2) with OPEN-STOP-CLOSE function
- 2 Plug-in-Module slots for signal monitoring and transduction (emergency open, fault)
- 1 Network port for connection and integration in building management systems (KNX)
- Direct connection input for wind and rain sensors
- Clear operating and display elements
- Extensive setting options of basic functions via „EMB compact“ software
- Housing (optional) with integrated break-glass unit and ventilation button (2,5 A / 5 A)
- Lead frame usable for flash mounting (2,5 A / 5 A)
- Cable entry from above, below or behind of the housing
- Prepared for connection of backup batteries (72 hours)
- VdS certification no.: G 514001

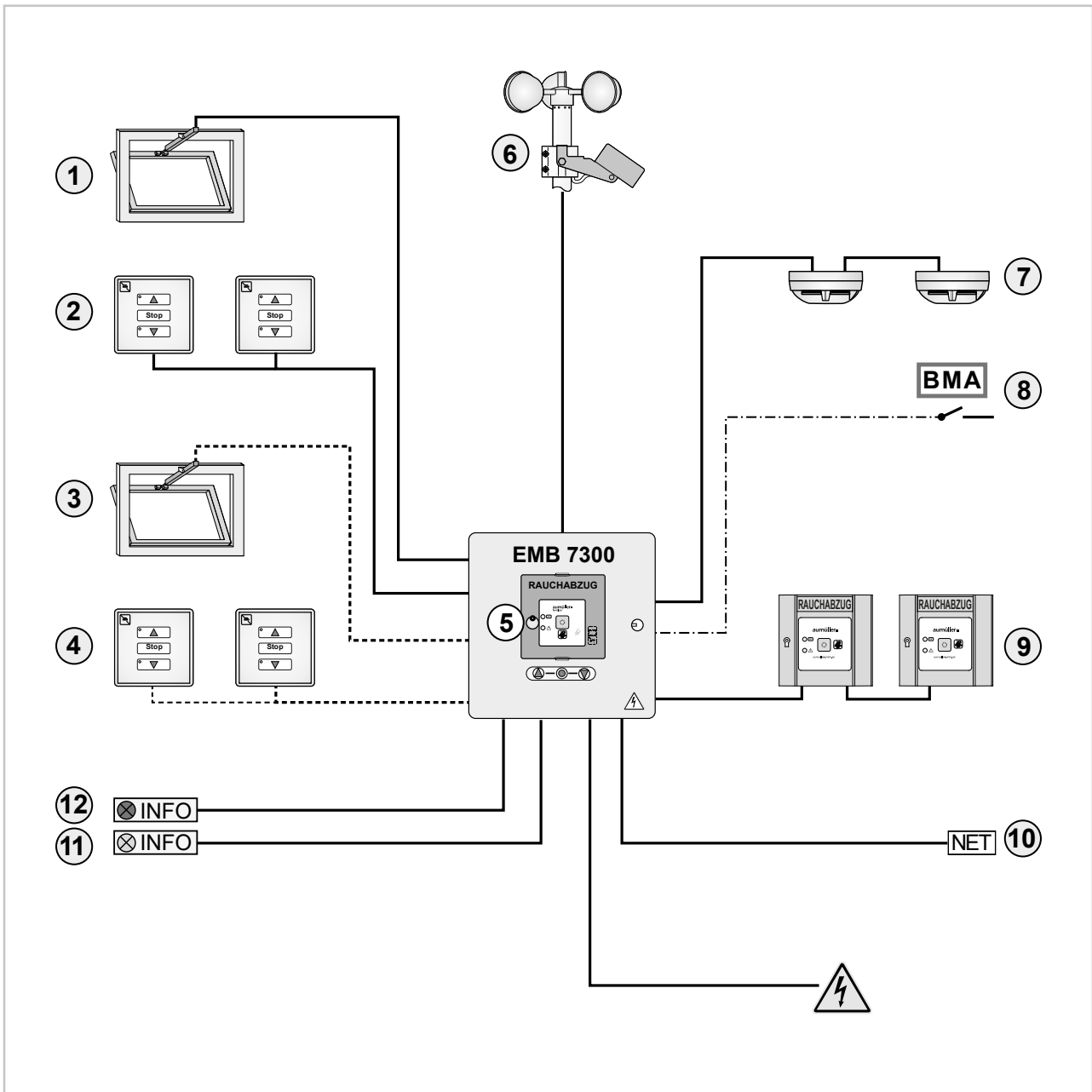
For this product series, a Type III Environmental Product Declaration (EPD) was issued according to ISO 14025 and EN 15804.

The LCA results of the different product types are listed at the end of this product catalogue.

The EPD documents can be viewed or downloaded from our homepage [www.aumueller-gmbh.de](http://www.aumueller-gmbh.de).

SOFTWARE FUNCTIONS		
Functions	Standard	License
Set ventilation inputs from dead-man to jog-switch mode (in OPEN and/or CLOSE direction)	✓	✓
Set failures of drive line monitoring as alarm signal	✓	✓
Disable alarm function caused by failures of detector line monitoring	✓	✓
Adjust switching threshold of wind sensor	✓	✓
Set drive run time and opening stroke limit for ventilation purpose	✓	✓
Enable and set automatic time-controlled drive line closing mode for ventilation purpose		✓
Enable drive line closing mode on primary power loss	✓	✓
Set acoustic or optical warning signals (additional hardware required)		✓
Display, save and print the status of the system	✓	✓
Firmware update	✓	✓
Set emergency close button from jog-switch mode to dead-man mode	✓	✓
Set next service and maintenance date (password protected)		✓
Set switch-on delay time for wind sensor		✓
Set switch-off delay time for wind sensor		✓
Disable retriggering of drive lines in alarm mode		✓
Active / disable manual break-glass unit lines (HSE)		✓
Active / disable smoke detector lines		✓
Enable smoke detector line input to be controlled by fire alarm systems "FAS"		✓
Set automatic switch-off time for drive lines		✓
EMERGENCY-CLOSE button while the smoke detector is active / disable		✓
Set drive running direction in alarm mode from open to close		✓
Set options of relay card REL65 (not in package)		✓
Set alarm functions for faults caused by each individual drive line (only 2 drive line version)		✓
Reset switch positions to the status before the weather control were activated		✓
Integration into digital networks with additional Plug-in Interface-Modules (KNX)		✓
Function natural ventilation control unit		✓
Setting operatingmodus (retention magnet / standard drive / pressure gas)		✓
SHEV dead-man		✓
Ventilation push button setting parallel operation		✓
Maintenance timer adjust		✓
OPEN case of line failure		✓
Activate with Reset button EMERGENCY-CLOSE		✓
Configure Content collective fault		✓





**CAPTION**

- ① Output for drive line 1, 24 V DC for smoke and heat exhausting and natural ventilation
  - ② Input for ventilation line 1 (max. 10 vent buttons)
  - ③ Output for drive line 2 (only for EMB 7300 5 A – 0102; 10 A – 0102; 20 A – 0102)
  - ④ Input for ventilation line 2 (max. 10 vent buttons) (only for EMB 7300 5 A – 0102; 10 A – 0102; 20 A – 0102)
  - ⑤ Housing of control unit with or without integrated break-glass unit and ventilation button
  - ⑥ Connections for wind and rain sensor (disabled in case of alarm and power loss)
  - ⑦ Input for smoke detectors (max. 10)
  - ⑧ Input for signal from external fire alarm system (alternative connection)
  - ⑨ Input for break-glass units (HSE – max. 10)
  - ⑩ Port for network integration (requires additional module)
  - ⑪ Output for signal transduction 1 (Plug-in-Module REL65 required)
  - ⑫ Output for signal transduction 2 (Plug-in-Module REL65 required)
- only available for EMB 7300 5 A – 0102; 10 A – 0102; 20 A – 0102

## ORDER DATA

			Part.-No.		
<b>EMB7300 2,5 A 0101</b>			<b>683020-0101</b>		
<b>Application:</b> Compact control unit for smoke and heat exhaust ventilation systems operating with 24 V DC voltage, suitable for staircases.					

**TECHNICAL DATA (Rated values)**

Operating voltage:	230 V AC (195 – 253 V AC, 50/60 Hz)
Max. power consumption:	115 W
Output voltage:	24 V DC (20 – 28 V DC / 2 Vpp)
Output current:	<b>2,5 A</b>
Ambient temperature range:	-5°C ... + 40°C
Protection rating:	IP30
Housing:	Surface mounting, steel sheet, RAL 7035 (light grey)
Dimensions (WxHxD):	225 x 285 x 122 mm
Connection terminals:	1,5 mm <sup>2</sup> / drive line: 4 mm <sup>2</sup> (rigid wire)
VdS certification no.:	G 514001 (without or with orange SHEV button)
Motherboard:	<b>1 SHEV group / 1 Vent groups</b>

## Feature/Equipment

- Further settings (e.g. maintenance period) only available with extra cost software license
- Cable entry from above / below / behind
- Optional housing for flash mounting
- Prepared for **2** maintenance-free back-up batteries **2x 12 V / 2,3 Ah** (Part. Nr. 541000)

## OPTIONS

			Part.-No.		
Version with break-glass unit (HSE) and ventilation button on the front of the housing					
EMB7300 2,5 A 0101-T	HSE red	(similar to RAL 3000)	<b>683021-0101</b>		
EMB7300 2,5 A 0101-T	HSE yellow	(similar to RAL 1018)	<b>683022-0101</b>		
EMB7300 2,5 A 0101-T	HSE grey	(similar to RAL 7035)	<b>683023-0101</b>		
EMB7300 2,5 A 0101-T	HSE blue	(similar to RAL 5009)	<b>683024-0101</b>		
EMB7300 2,5 A 0101-T	HSE orange	(similar to RAL 2011) VdS certification no.: G 514001	<b>683025-0101</b>		

### ORDER DATA

			Part.-No.	
<b>EMB7300 5 A 0101</b>			<b>683050-0101</b>	
<b>Application:</b> Compact control unit for smoke and heat exhaust ventilation systems operating with 24 V DC voltage, suitable for staircases.				



#### TECHNICAL DATA (Rated values)

Operating voltage:	230 V AC (195 – 253 V AC, 50/60 Hz)
Max. power consumption:	460 W
Output voltage:	24 V DC (20 – 28 V DC / 0,5 Vpp)
Output current:	<b>5,0 A</b>
Ambient temperature range:	-5°C ... + 40°C
Protection rating:	IP30
Housing:	Surface mounting, steel sheet, RAL 7035 (light grey)
Dimensions (WxHxD):	225 x 285 x 122 mm
Connection terminals:	1,5 mm <sup>2</sup> / Drives: 6 mm <sup>2</sup> (rigid wire)
VdS certification no.:	G 514001 (without or with orange SHEV button)
Motherboard:	<b>1 SHEV group / 1 Vent group</b>

#### Feature/Equipment

- Further settings (e.g. maintenance period) only available with extra cost software license
- Cable entry from above / below / behind
- Optional housing for flash mounting
- Prepared for **2** maintenance-free backup batteries **2x 12 V / 2,3 Ah** (Part. Nr. 541000)

### OPTIONS

Available with breaglass unit and ventilation button on housing cover			Part.-No.	
EMB7300 5 A 0101-T	HSE red	(similar to RAL 3000)	<b>683051-0101</b>	
EMB7300 5 A 0101-T	HSE yellow	(similar to RAL 1018)	<b>683052-0101</b>	
EMB7300 5 A 0101-T	HSE grey	(similar to RAL 7035)	<b>683053-0101</b>	
EMB7300 5 A 0101-T	HSE blue	(similar to RAL 5009)	<b>683054-0101</b>	
EMB7300 5 A 0101-T	HSE orange	(similar to RAL 2011) VdS certification no.: G 514001	<b>683055-0101</b>	

<b>EMB7300 5 A 0102</b>			<b>683050-0102</b>	
<b>Application:</b> Compact control unit for smoke and heat exhaust ventilation systems operating with 24 V DC voltage, suitable for staircases.				



#### TECHNICAL DATA (Rated values)

Operating voltage:	230 V AC (195 – 253 V AC, 50/60 Hz)
Max. power consumption:	460 W
Output voltage:	24 V DC (20 – 28 V DC / 0,5 Vpp)
Output current:	<b>5,0 A</b>
Ambient temperature range:	-5°C ... + 40°C
Protection rating:	IP30
Housing:	Surface mounting, steel sheet, RAL 7035 (light grey)
Dimensions (WxHxD):	225 x 285 x 122 mm
Connection terminals:	1,5 mm <sup>2</sup> / Drives: 6 mm <sup>2</sup> (rigid wire)
VdS certification no.:	G 514001
Motherboard:	<b>1 SHEV group / 2 Vent groups</b>

#### Feature/Equipment

- Further settings (e.g. maintenance period) only available with extra cost software license
- Cable entry from above / below / behind
- Optional housing for flash mounting
- Prepared for **2** maintenance-free backup batteries **2x 12 V / 2,3 Ah** (Part. Nr. 541000)

**ORDER DATA**

		Part.-No.		
<b>Flush mounting housing EMB7300 2,5 A / 5 A</b>		<b>683111</b>		
<b>Application:</b> Housing for flush mouting of EMB7300 2,5 A or 5 A in its own housing 225 x 285 x 122 mm.				



**TECHNICAL DATA**

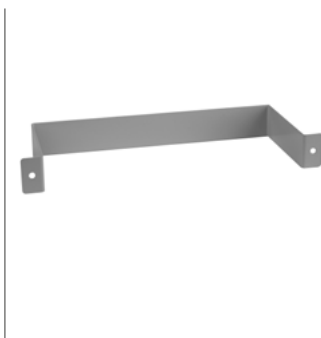
Material:	Steel sheet
Colour:	RAL 7035 (light grey)
<b>Flush housing:</b>	
Dimensions (WxHxD):	254 x 314 x 96 mm
<b>Plaster frame:</b>	
Dimensions (WxHxD):	282 x 342 x 48 mm
PE-Connecting cable:	160 mm with blade terminals 6,3 mm
Polystyrene plate:	240 x 302 x 93 mm

**2,5 A** **5 A**

**Feature/Equipment**

- Plaster frame with 4x rounded head screws M3x6, 4x plain washer A4
- Flush housing with 4x screw sleeve and safety nuts M5, 4x stainless steel mounting brackets 13 x 13 x 1 mm, 8x Tapping screws ST3, 5x6,5
- Polystyrene plate to avoid damage during plastering of the wall

<b>Accumulator holder</b>		<b>683250</b>		
<b>Application:</b> Holder to fix the Back-up batteries 12V / 2,3 Ah within the housing of control units.				



**TECHNICAL DATA**

Material:	Steel sheet
Colour:	RAL 7035 (light grey)

**2,5 A** **5 A**

**Feature/Equipment**

- Suitable for **EMB7300 2,5 A** and **EMB7300 5 A**

### ORDER DATA

		Part.-No.	
<b>EMB7300 10 A 0101</b>	<b>683010-0101</b>		
<b>Application:</b> Compact control unit for smoke and heat exhaust ventilation systems operating with 24 V DC voltage, suitable for staircases.			



#### TECHNICAL DATA (Rated values)

Operating voltage:	230 V AC (195 – 253 V AC, 50/60 Hz)
Max. power consumption:	506 W
Output voltage:	24 V DC (20 – 28 V DC / 0,5 Vpp)
Output current:	<b>10 A</b>
Ambient temperature range:	-5°C ... + 40°C
Protection rating:	IP40 IP54 with alternatively fixing brackets
Housing:	Surface mounting, steel sheet, RAL 7035 (light grey)
Dimensions (WxHxD):	400 x 300 x 150 mm
Connection terminals:	1,5 mm <sup>2</sup> / Drives: 6 mm <sup>2</sup> (rigid wire)
VdS certification no.:	G 514001
Motherboard:	<b>1 SHEV group / 1 Vent group</b>

#### Feature/Equipment

- Further settings (e.g. maintenance period) only available with extra cost software license
- Cable entry from above / below
- Prepared for **2** maintenance-free backup batteries **2x 12 V / 7 Ah** (Part. Nr. 542000)

		Part.-No.	
<b>EMB7300 10 A 0102</b>	<b>683010-0102</b>		
<b>Application:</b> Compact control unit for smoke and heat exhaust ventilation systems operating with 24 V DC voltage, suitable for staircases.			



#### TECHNICAL DATA (Rated values)

Operating voltage:	230 V AC (195 – 253 V AC, 50/60 Hz)
Max. power consumption:	506 W
Output voltage:	24 V DC (20 – 28 V DC / 0,5 Vpp)
Output current:	<b>10 A</b>
Ambient temperature range:	-5°C ... + 40°C
Protection rating:	IP40 IP54 with alternatively fixing brackets
Housing:	Surface mounting, steel sheet, RAL 7035 (light grey)
Dimensions (WxHxD):	400 x 300 x 150 mm
Connection terminals:	1,5 mm <sup>2</sup> / Drives: 6 mm <sup>2</sup> (rigid wire)
VdS certification no.:	G 514001
Motherboard:	<b>1 SHEV group / 2 Vent groups</b>

#### Feature/Equipment

- Further settings (e.g. maintenance period) only available with extra cost software license
- Cable entry from above / below
- Prepared for **2** maintenance-free backup batteries **2x 12 V / 7 Ah** (Part. Nr. 542000)

		Part.-No.	
<b>EMB7300 10 A 0204</b>	<b>683010-0204</b>		
<b>Application:</b> Compact control unit for smoke and heat exhaust ventilation systems operating with 24 V DC voltage, suitable for staircases.			



#### TECHNICAL DATA (Rated values)

Operating voltage:	230 V AC (195 – 253 V AC, 50/60 Hz)
Max. power consumption:	506 W
Output voltage:	24 V DC (20 – 28 V DC / 0,5 Vpp)
Output current:	<b>10 A</b>
Ambient temperature range:	-5°C ... + 40°C
Protection rating:	IP40 IP54 with alternatively fixing brackets
Housing:	Surface mounting, steel sheet, RAL 7035 (light grey)
Dimensions (WxHxD):	400 x 500 x 200 mm
Connection terminals:	1,5 mm <sup>2</sup> / Drives: 6 mm <sup>2</sup> (rigid wire)
VdS certification no.:	G 514001
Motherboard:	<b>2 SHEV group / 4 Vent groups</b>

#### Feature/Equipment

- Further settings (e.g. maintenance period) only available with extra cost software license
- Cable entry from above / below
- Prepared for **2** maintenance-free backup batteries **2x 12 V / 7 Ah** (Part. Nr. 542000)

**ORDER DATA**

		Part.-No.	
<b>EMB7300 20 A 0102</b>		<b>683220-0102</b>	
<b>Application:</b> Compact control unit for smoke and heat exhaust ventilation systems operating with 24 V DC voltage, suitable for staircases.			



**TECHNICAL DATA (Rated values)**

Operating voltage:	230 V AC (195 – 253 V AC, 50/60 Hz)
Max. power consumption:	805 W
Output voltage:	24 V DC (20 – 28 V DC / 0,5 Vpp)
Output current:	<b>20 A</b>
Ambient temperature range:	-5°C ... + 40°C
Protection rating:	IP40 IP54 with alternatively fixing brackets
Housing:	Surface mounting, steel sheet, RAL 7035 (light grey)
Dimensions (WxHxD):	400 x 400 x 200 mm
Connection terminals:	1,5 mm <sup>2</sup> / Drives: 6 mm <sup>2</sup> (rigid wire)
VdS certification no.:	G 514001
Motherboard:	<b>1 SHEV group / 2 Vent groups</b>

Feature/Equipment

- Further settings (e.g. maintenance period) only available with extra cost software license
- Cable entry from above / below
- Prepared for **2** maintenance-free backup batteries **2x 12 V / 7 Ah** (Part. Nr. 542000)

		Part.-No.	
<b>EMB7300 20 A 0204</b>		<b>683220-0204</b>	
<b>Application:</b> Compact control unit for smoke and heat exhaust ventilation systems operating with 24 V DC voltage, suitable for staircases.			



**TECHNICAL DATA (Rated values)**

Operating voltage:	230 V AC (195 – 253 V AC, 50/60 Hz)
Max. power consumption:	805 W
Output voltage:	24 V DC (20 – 28 V DC / 0,5 Vpp)
Output current:	<b>20 A</b>
Ambient temperature range:	-5°C ... + 40°C
Protection rating:	IP40 IP54 with alternatively fixing brackets
Housing:	Surface mounting, steel sheet, RAL 7035 (light grey)
Dimensions (WxHxD):	400 x 500 x 200 mm
Connection terminals:	1,5 mm <sup>2</sup> / Drives: 6 mm <sup>2</sup> (rigid wire)
VdS certification no.:	G 514001
2x Motherboard:	<b>2 SHEV group / 4 Vent groups</b>

Feature/Equipment

- Further settings (e.g. maintenance period) only available with extra cost software license
- Cable entry from above / below
- Prepared for **2** maintenance-free backup batteries **2x 12 V / 12 Ah** (Part. Nr. 542200)

**10 A**   **20 A**

**ACCESSORIES**

Part.-No.		VE		
<b>500001</b>	<b>Wall fixing brackets IP54</b>	<b>4 piece</b>		

### ORDER DATA

		Part.-No.		
<b>WR-Set Type 7x/8x – Wind and Rain Sensor Set</b>		<b>482100</b>		
<b>Application:</b>	Sensors for wind and rain to work with an evaluation unit WRAG2 or Typ IV, a WM Weather-Module or directly with a SHEV control unit, for closing and blocking the natural ventilation under bad weather conditions.			



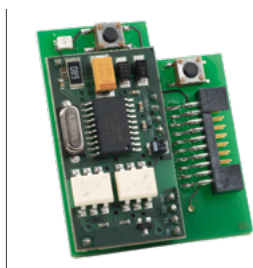
#### TECHNICAL DATA (Rated values)

Rated voltage:	24 V DC (+/- 20%)
Rain sensor Type III – heated sensor surface, switch-off delay approx. 5 min.	
Contact:	1 Change-over switch, max. 48 V / 5A
Current consumption:	<150 mA
Housing:	Surface mounting, ABS black with stainless steel bracket
Dimensions (WxD):	100 x 85 x 172 mm
Connection cable:	Non-halogen cable, approx. 4 m
Volt free contact:	1 Change-over switch, max. 48 V / 1A
Wind sensor Type III – Anemometer with 3 impact resistant wind cups (PA6)	
Measuring principle:	Pulse generator
Dimensions:	250 x 250 x 80 mm
Connection cable:	Non-halogen cable, approx. 4 m

#### Feature/Equipment

- Set including: Wind sensor Type III (Part.-No. 482021), rain sensor Type III (Part.-No. 480210), clamp ring (Part.-No. 515950), aluminium bracket for pole or wall mounting (Part.-No. 482093), without mounting screws

<b>BI-K - KNX Interface LZ1 / LZ6 / EMB 7300</b>		<b>683999</b>		
<b>Application:</b>	Plug-in card for communication between the controllers <b>AUMÜLLER</b> LZ1, LZ6 and EMB 7300 to the KNX BUS system.			



#### TECHNICAL DATA

Rated voltage:	24 V DC
Ambient temperature range:	-5°C ... + 40°C
Relative humidity:	(no condensate) 5% ... 90%
Data points:	up to 16 pieces per drive line
BUS current:	9mA
Housing:	without (assembled PCB)
Dimensions (WxH):	51 x 42 mm
Connection terminals:	2 x 2 x 0,8 mm (KNX-BUS-Terminal)

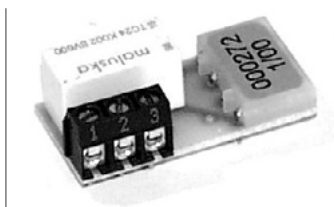
#### Feature/Equipment

- Data of the control (e.g. drive position) are sent on the KNX-BUS.
- The controls received direct orders from the KNX-BUS (e.g. position information, weather data).
- The licensed version of the „EMB compact configurator“ required - for commissioning.

## ORDER DATA

Part.-No.

REL65

**Application:** Plug-in card for EMB7300 with relay for forwarding the alarm or fault signal to external devices.**TECHNICAL DATA**

Rated voltage: 24 V DC  
 Ambient temperature range: -5°C ... + 40°C  
 Housing: w/o (assembled PCB)  
 Dimensions (WxHxD): 20 x 40 x 13 mm

Volt free contac: 1 Change-over switch, max. 48 V / 1 A  
 Connection terminals: 3x 1,5 mm<sup>2</sup> (rigid wire)

**Feature/Equipment**

- Connector for plugging the relay card to the motherboard

## VERSIONS

Part.-No.					
650200	Delivery in parcel	for customer self-installation			
650200-9	Module factory fitted	factory fitted and fully wired			

7xPSB

**Application:** Plug-in card for EMB7300 for connection and powering of external consumers with **24 V DC voltage**.**TECHNICAL DATA**

Rated voltage: 24 V DC  
 Ambient temperature range: -5°C ... + 40°C  
 Output current: **0,5 A**  
 Housing: w/o (assembled PCB)  
 Dimensions (WxHxD): 20 x 32 x 13 mm

Connection terminals: Screw terminals 1,5 mm<sup>2</sup> (rigid wire)  
 Voltage tap: 2 terminals 24 V DC backup voltage supplied  
 2 terminals 24 V DC mains voltage supplied

**Feature/Equipment**

- Connector for plugging the card to the motherboard
- Screw-type-terminal 4 x 1,5 mm<sup>2</sup>

**NOTE:** The overall power consumption of connected external consumers is to be considered!

## VERSIONS

Part.-No.					
683256	Delivery in parcel	for customer self-installation			
683256-9	Module factory fitted	factory fitted and fully wired			



### ORDER DATA

		Part.-No.		
<b>USB-Cable</b>		<b>683253</b>		
<b>Application:</b>	USB-Cable for connecting a PC with EMB7300 to configurate basic and special functions.			



#### TECHNICAL DATA

USB-Standard: USB2  
Cable length: 3 m

#### Feature/Equipment

- Software „EMB-Compact“ required!

<b>Accumulators</b>				
<b>Application:</b>	Maintenance of standby operation of SHEV control units over a period of 72 hours of main power supply loss.			



#### TECHNICAL DATA

Type: Lead storage battery  
Output voltage: 12 V DC  
Capacity: see order data  
Lifetime: 4 years (normal conditions)  
Connections: 1,2 – 12 Ah: blade terminals 4,8 mm  
17 – 38 Ah: screw terminals M5  
Housing: plastic, impact- and break-resistant

#### Feature/Equipment

- Maintenance free operation, long lasting durability, high charging performance and long-cycle stability
- Disposal due to local, national or international rules (WEEE)

**NOTE:** Always 2 batteries are required per control unit!

### OPTIONS

#### for control units with backup power supply

2,2/2,3 Ah, 12 V	1 Pcs.	<b>541000</b>		
7 Ah, 12 V	1 Pcs.	<b>542000</b>		

### SOFTWARE / LICENSE / PROGRAMMING EMB7300

<b>Configuration software for extended scope of functions</b> System Requirements: Microsoft® Windows 7 / Microsoft® Windows 10 64 Bit	Part.-No.			
First software license (3 years)	<b>683260</b>			
Follow-up software license (3 years)	<b>683261</b>			
Configuration of customized functions at the factory for one Control Unit	<b>683262</b>			

**ORDER DATA**

Part.-No.

**Radio-HSE - Break-glass unit main control panel (plastic)**

**Application:** Break-glass unit with indicators and buttons for the manual control of the emergency open and close functions of a SHEV group, for radio-connection in the **AUMÜLLER** SHEV - Control Unit EMB 7300.



**TECHNICAL DATA (Rated values)**

Operating voltage: 3,6 V DC  
 Ambient temperature range: -5°C ... + 40°C  
 Housing: **Surface mounting, plastic (ABS)**  
 Dimensions (WxHxD) 130 x 130 x 32 mm  
 Protection rating: IP30  
 Display: Emergency OPEN, power, fault  
 Control elements: Buttons for emergency OPEN / CLOSE

**RADIO**

**Feature / Equipment**

- Lockable, glazed door (including key)
- Radio button
- 3,6 V Lithium battery
- The licensed version of the „EMB compact configurator“ required - for commissioning.

**NEW**

**VERSIONS**

<b>Radio-HSE</b>	plastic orange	(similar to RAL 2011)	<b>528340</b>		
<b>Radio-HSE</b>	plastic red	(similar to RAL 3000)	<b>528341</b>		
<b>Radio-HSE</b>	plastic yellow	(similar to RAL 1018)	<b>528342</b>		
<b>Radio-HSE</b>	plastic blue	(similar to RAL 5015)	<b>528343</b>		
<b>Radio-HSE</b>	plastic grey	(similar to RAL 7035)	<b>528344</b>		

**OPTIONS**

**RADIO**

<b>Spare battery 3,6 V Lithium</b>	<b>545050</b>		
------------------------------------	---------------	--	--

### ORDER DATA

Part.-No.

#### Receiver plug-in card radio SHEV

528738

**Application:** Plug-in card for radio communication between the **AUMÜLLER** SHEV Control Unit EMB 7300 and **up to 10 Radio-HSE**.



#### TECHNICAL DATA

Rated voltage:	24 V DC
Ambient temperature range:	-5°C ... + 40°C
Relative humidity:	(no condensate) 5% ... 90%
Housing:	without (assembled PCB)
Dimensions (WxH):	51 x 42 mm
Connection:	SMA antenna connection

**RADIO**

#### Feature/Equipment

- Production of a bidirectional communication between **Radio-HSE** and **AUMÜLLER** SHEV Control Unit EMB 7300.
- The licensed version of the „EMB compact configurator“ required - for commissioning.

#### Radio Antenna

528737

**Application:** Radio Antenna for radio communication between the **AUMÜLLER** SHEV - Control Unit EMB 7300 and up to 10 Radio-HSE (Break-glass unit main control panel).



#### TECHNICAL DATA (Rated values)

Ambient temperature range:	-5°C ... + 40°C
Relative humidity:	(no condensate) 5% ... 90%
Dimensions (WxHxD)	34 x 265 x 82 mm
Connection:	SMA antenna connection

**RADIO**

#### Feature/Equipment

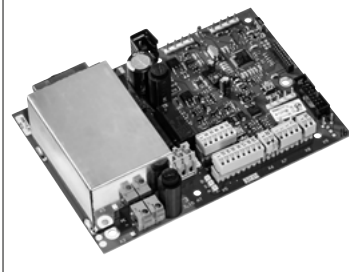
- Production of a bidirectional communication between Radio-HSE and EMB 7300.
- The licensed version of the „EMB compact configurator“ required - for commissioning.

## ORDER DATA

Part.-No.

## Replacement board EMB7300 2,5A 1LG

683029

**Application:** Replacement board, for Control Units **EMB7300-2,5A-0101** with one motor line.**TECHNICAL DATA**

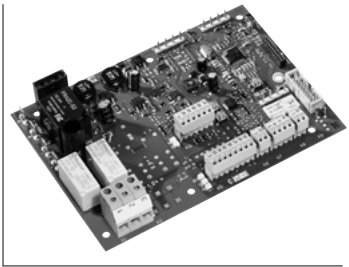
Operating voltage:	230 V AC (195 - 253 V AC, 50/60 Hz)
Output voltage:	24 V DC (2 Vpp)
Output current:	<b>2,5 A</b>
Vent groupe:	1

**Feature/Equipment**

- Board assembled and checked

## Replacement board EMB7300 5A / 10A 1LG

683059

**Application:** Replacement board, for Control Units **EMB7300-5A-0101** and **EMB7300-10A-0101** with one motor line.**TECHNICAL DATA**

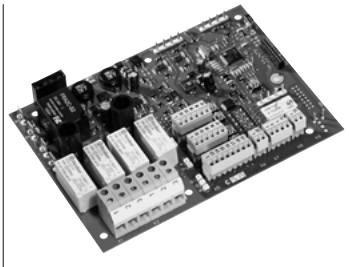
Operating voltage:	230 V AC (195 - 253 V AC, 50/60 Hz)
Output voltage:	24 V DC (2 Vpp)
Output current:	<b>5 / 10 A</b>
Vent groupe:	1

**Feature/Equipment**

- Board assembled and checked

## Replacement board EMB7300 5A / 10A / 20A 2LG

683229

**Application:** Replacement board, for Control Units **EMB7300-5A-0102**, **EMB7300-10A-0102** and **EMB7300-20A-0102** with two motor lines.**TECHNICAL DATA**

Operating voltage:	230 V AC (195 - 253 V AC, 50/60 Hz)
Output voltage:	24 V DC (2 Vpp)
Output current:	<b>5 / 10 / 20 A</b>
Vent groupes:	2

**Feature/Equipment**

- For Control Units 5A - 20A with two motor lines.

**ORDER DATA**

	Part.-No.			
<b>Key 1D9</b>	<b>260010</b>			

**Application:** Replacement key for the housing of a Control Unit.



**TECHNICAL DATA**

Size: **1D9**  
 Key: 1 piece

**Feature/Equipment**

- For lock 1D9 straight bolt EMB7300

<b>Lock 1D9, including two keys</b>	<b>260008</b>			
-------------------------------------	---------------	--	--	--

**Application:** Lock - with security cylinder and straight bolt - for the housing of a Control Unit. Including two keys and a spring.

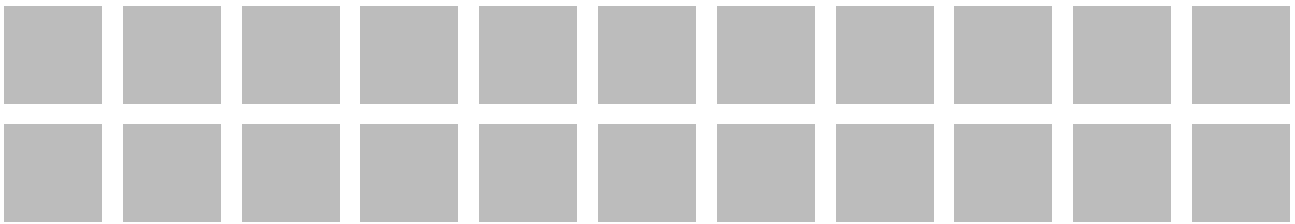


**TECHNICAL DATA**

Size: **1D9**  
**Security cylinder insert**  
 Keys: 2 pieces

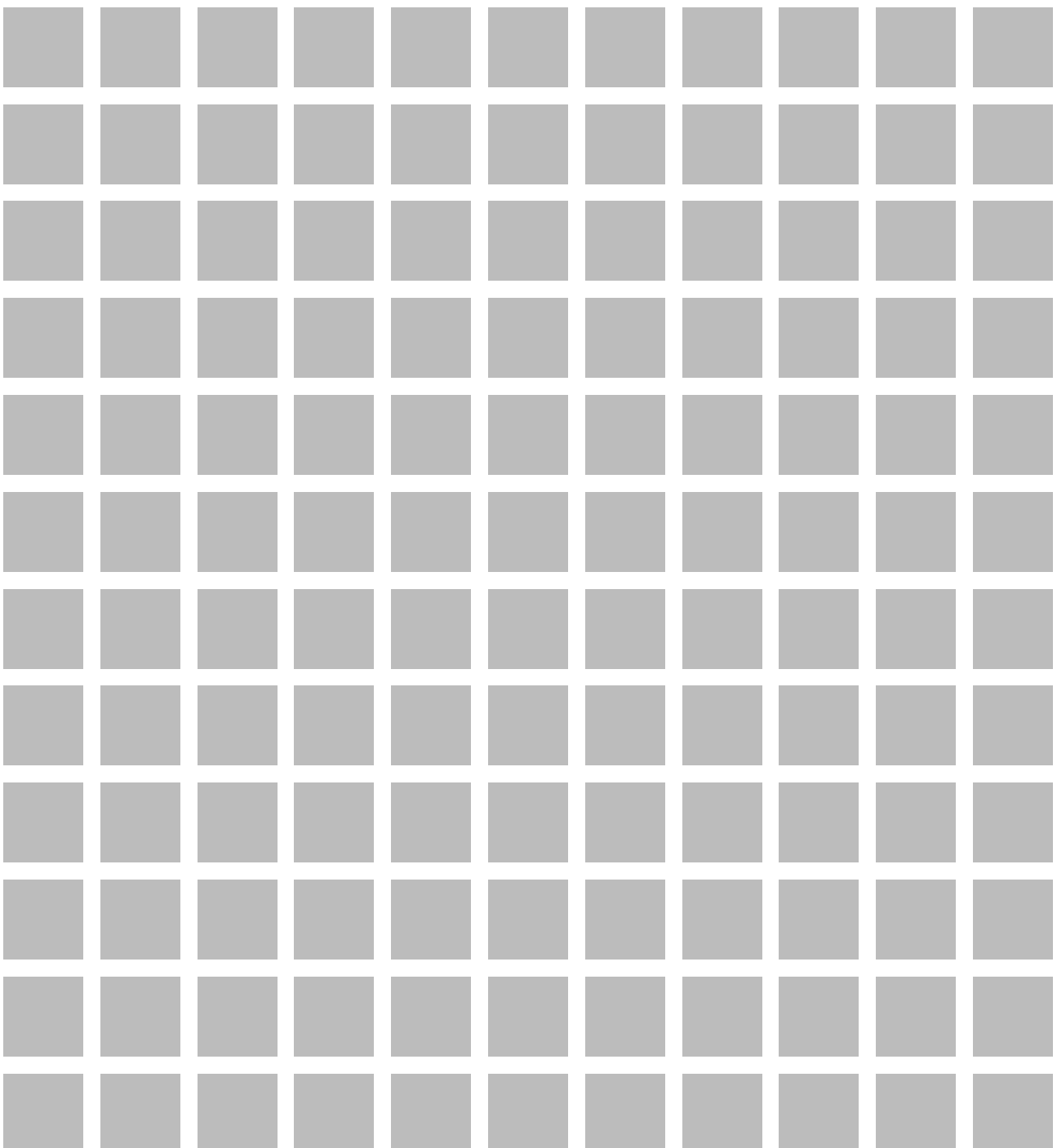
**Feature/Equipment**

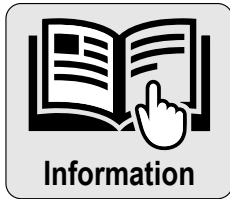
- Lock 1D9 straight bolt EMB7300



# 2

## SHEV – Modular Control Units





**General information about this product**

- Product features EMB8000+
- Scope of the configuration software
- Application example of a complete system
- Basic versions expandable:  
Planning notes / expansion limitation / configuration / parameter of modules

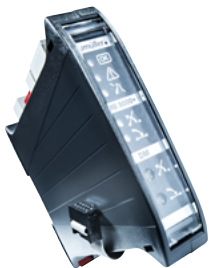
To the information



**EMB8000+ Basic versions expandable**

- EMB8000+ 5 A
- EMB8000+ 10 A
- EMB8000+ 24 A
- EMB8000+ 48 A
- EMB8000+ 72 A
- EMB8000+ 96 A

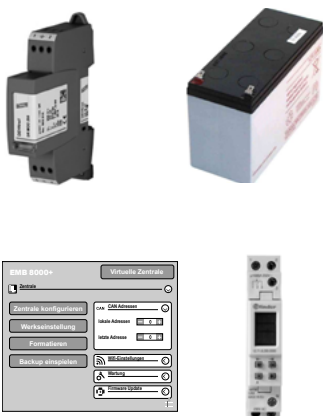
To the product



**EMB8000+ module**

- |                   |              |
|-------------------|--------------|
| ■ DM              | ■ IM-K - KNX |
| ■ + 230 V-DM Vent | ■ WM         |
| ■ DMX             | ■ CM         |
| ■ IDM             | ■ PM         |
| ■ SM              | ■ PME        |
| ■ RM6             |              |

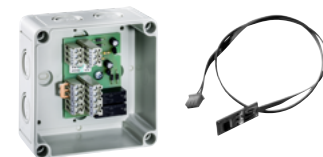
To the product



**EMB8000+ accesories**

- Terminals
- Service
- Surge arrester Type 3
- Automatic circuit breaker
- Software licence EMB 8000+ Alpha
- Accumulators
- Relay interface + Wall fixing brackets
- Time switch
- Temperature sensor

To the product





For this product series, a Type III Environmental Product Declaration (EPD) was issued according to ISO 14025 and EN 15804.

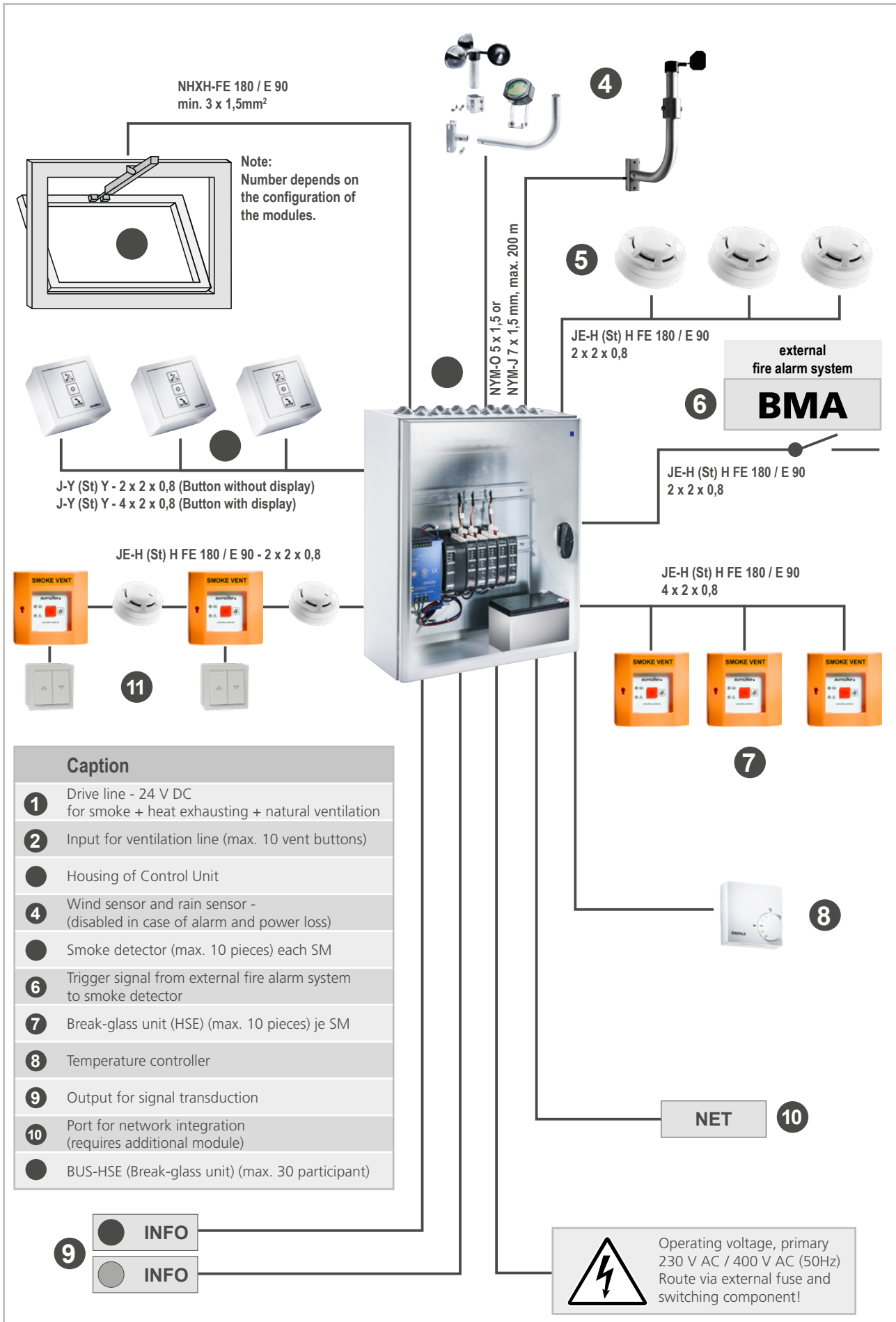
The LCA results of the different product types are listed at the end of this product catalogue. The EPD documents can be viewed or downloaded from our homepage [www.aumuller-gmbh.de](http://www.aumuller-gmbh.de).

### PRODUCT FEATURES EMB 8000+

- Modular control panel with digital bus technology and power supply for 24 V DC drives for use in smoke and heat exhausting ventilation (SHEV) and in controlled natural ventilation systems
- Control panel compliant with prEN 12101-9 / ISO 21927-9
- Power supply compliant with EN 12101-10 (except EMB8000+ 5A)
- Low residual ripple output voltage (<2 Vpp) - compatible with all common drives
- Easy and space saving installation on 35-mm snap-on mounting rail with many combination options
- Easy configuration of SHEV and ventilation groups by selective lining up of the modules
- Control- and Sensor-Module with 3 monitored detector lines with different priorities for connecting with:
  - Manual break-glass unit (HSE)
  - Automatic smoke and heat detectors
  - Control signal from fire alarm system (FAS)
- Drive-Module with monitored line outputs for connection of drives up to 20 A
- Relay-Module for the evaluation and transmission of events (emergency open signal, fault signal, feedback signals)
- Weather-Module for connection with wind speed sensors, wind direction sensors and rain sensors
- Network-Modules for connection and integration with building management systems (CAN, KNX)
- All ventilation button inputs with OPEN-STOP-CLOSE function and adjustable priorities
- Clear operating and display elements
- Extensive settings of the basic functions via software offered by download free of charge
- Special functions programmable via extra costs software license as in the following:
  - Service and maintenance intervals
  - Changes of priorities, switching-thresholds and switch-off times
  - Deactivation of the detector lines or of their monitoring
  - Control of the alarm functions by a volt-free contact of the fire alarm system (FAS)
  - Network integration
- Steel sheet housing, protection class IP40 / IP54 alternatively available with wall fixing brackets, cable exit from above
- Prepared for connection of backup batteries (72 hours)
- VdS certification no.: G 512005 (except EMB8000+ 5A)
- In the state of delivery, the interconnection of SHEV and ventilation groups can be configured
  - by targeted lining up of the modules - without software.
- System components for individual assembly consisting of functional basic control units each with one SHEV and one ventilation group, as well as a variety of modules and components that can be ordered either as factory-installed or for customer-side yourself installation.
- Software licences for enabling and configuration of complex integrated special functions as well as for the interconnection of multiple control units to a network with higher-ranking functions for SHEV, ventilation and weather groups
- Fully assembled and configured - at the factory or by self-expansion.
- Fully assembled and configured from the factory or for self-removal
- Individual customization through extensive software options



SCOPE OF THE CONFIGURATION SOFTWARE EMB 8000+		
Functions	Standard	Lizenz
Load configuration / Safe / Safe as	✓	✓
View, save and print system status	✓	✓
Set thresholds and on-off delay of wind sensor	--	✓
Create PDF of the configuration	✓	✓
System configuration / Load settings / Save settings	✓	✓
Read RealTime LOG-Data	✓	✓
Set Password for control unit	--	✓
Edit RealTime LOG-Data	--	✓
Firmware update	--	✓
Configure switching thresholds and on-off delay of the wind sensor	--	✓
Configure switching thresholds of wind direction sensor	--	✓
System time synchronisation / updating	--	✓
Backup battery monitoring: Performance and fault indications (active, windows OPEN / CLOSE)	--	✓
Set backup battery type and charging characteristics (temperature dependent / constant)	--	✓
Power supply loss: Performance and fault indication (Energy saving mode, CLOSE, ventilation mode)	--	✓
Ventilation push button in dead-man or jog-switch mode (OPEN or/and CLOSE direction)	--	✓
Ventilation push button as one rocker push-button (OPEN/STOP or CLOSE/STOP with one button)	--	✓
Set step-automatic in OPEN-direction (Automatic enabled / Time setting)	--	✓
Enable reset of smoke detector lines with emergency-CLOSE button	--	✓
Enable control of smoke detector line by fire alarm system „FAS“	--	✓
Disable alarms caused by detector line monitoring failures (Automatic and manual detectors)	--	✓
Disable fault detection of detector lines (Automatic and manual detectors)	--	✓
Set functions of PM, CM and SM relay contact	--	✓
Set service and maintenance interval and system behaviour	--	✓
Set drive line mode for use with motors, magnets or gas pressure generators	--	✓
Disable retriggering of drive line in alarm mode	--	✓
Set switch-off time of drive lines	--	✓
Enable and set automatic time-controlled drive line closing mode for ventilation purpose	--	✓
Enable drive closing mode on primary power loss	--	✓
Set drive run time and opening stroke limit for ventilation purpose	--	✓
Set failures of drive line monitoring as alarm signal	--	✓
Set drive running direction in alarm mode from open to close	--	✓
Set signal input of DM drive line (feedback input / inhibiting input)	--	✓
Set wind direction dependent OPENING / CLOSING of drive lines	--	✓
Reset switch positions to the status before the weather control were activated	--	✓
Set emergency close button from jog-switch mode to dead-man mode	--	✓
Set functions of RM6 relays	--	✓
Set assignment of detector and drive lines to SHEV, ventilation and weather groups	--	✓
Interconnection of several control units to a network with higher-ranking functions	--	✓
Integration into digital networks (CAN, KNX) (requires additional modules)	--	✓

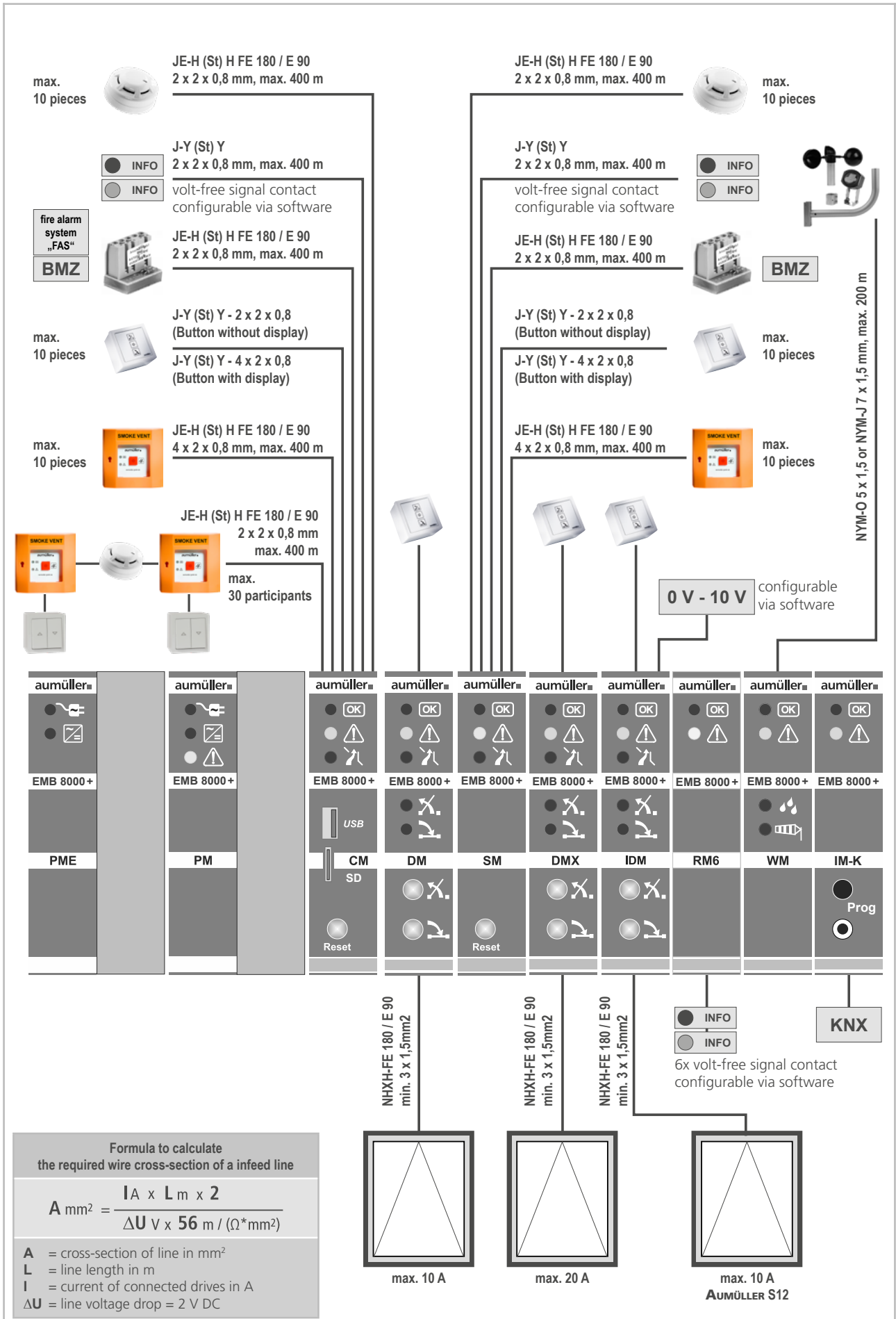


### Caption

- 1 Drive line - 24 V DC for smoke + heat exhausting + natural ventilation
- 2 Input for ventilation line (max. 10 vent buttons)
- Housing of Control Unit
- 4 Wind sensor and rain sensor - (disabled in case of alarm and power loss)
- Smoke detector (max. 10 pieces) each SM
- 6 Trigger signal from external fire alarm system to smoke detector
- 7 Break-glass unit (HSE) (max. 10 pieces) je SM
- 8 Temperature controller
- 9 Output for signal transduction
- 10 Port for network integration (requires additional module)
- BUS-HSE (Break-glass unit) (max. 30 participant)

9

● INFO  
● INFO



### IMPORTANT NOTES

The modular design of EMB 8000+ in combination with digital network technology make it possible for our customers to size, assemble and configure the control units by themselves.

For this **AUMÜLLER** is providing the required hardware and software.

The minimum equipment of a fully functional Control Unit:

- 1x Switch mode power supply PS 5 A up to 24 A – the installation up to 3 identical power supplies up to a maximum of 72 A is possible
- 2x Accumulators 12 V DC from 7 Ah to 38 Ah to ensure the emergency power supply for 72 hours
- 1x Power-Module PM for the charging control of accumulators – completed with up to 2 Power-Module-Extensions PME
- 1x Control-Module CM with 3 detector input lines for automatic and manual smoke detectors and 1 ventilation button input line
- 1x Drive-Module DM, IDM or DMX for connection of drives with a total current consumption of 10 A respectively 20 A and 1 ventilation button input line

The control units on the following pages are intended for individual configuration and are prepared for 1 SHEV group with 1 ventilation line (10 A or 20 A) and are pre-programmed for basic functions.

**AUMÜLLER** does not assume any liability for further changes and configurations of these control units.

### PLANNING NOTES

The build-in modules of EMB 8000+ are connected to each other and communicate via the digital network bus. On delivery respectively as long as the delivered software configuration is not changed, the modules are self-learning. SHEV groups can be easily and flexibly configured by selective lining up of the modules. A new SHEV group is created by adding a Sensor-Module (SM) into the row. All following Drive-Modules (DM / DMX) belong to the new SHEV group.

In the Control Units with several switch mode power supplies in one housing (48 A and 72 A), the interconnection of Drive-Modules (DM / DMX) and their total current consumption has to be adapted to the current consumption of the individual switch mode power supply at which they are connected. This can be done by replugging the power supply of the modules. The SHEV group to which the DM / DMX belongs is irrelevant. To ensure the optimum of safety in case of a failure of a switch mode power supply, it is recommended to power the DM/DMX of one SHEV group from only one switch mode power supply. The maximum switching capacity of the DM-modules is to be noted.

Due to the compact design of the modules, the module connection terminals for peripheral devices are limited to 1 mm<sup>2</sup> and for drive lines to 2,5 mm<sup>2</sup> rigid wire conductors. The cross sections of the wires between control unit and drives depend on the cable length, the current consumption as well as the voltage drop on the line. A 35-mm snap-on mounting rail is provided inside the housing, for additional bigger connection terminals if the required cable cross section is larger than the module-own connection terminals. Suitable connection terminals will be found under „accessories“. The cross sections of the cables may be calculated with the formula indicated in chart 5.

**EXPANSION LIMITATIONS / SYSTEM LIMITS**

The following key data must be taken into account when dimensioning SHEV Control Units:

- Number of smoke detectors per CM / SM 10 piece
- Number of break-glass units per CM / SM 10 piece
- Number of digital trigger units per CM 30 piece
- Number of smoke detectors per control unit 60 piece
- Number of break-glass units per control unit 60 piece
- Own power consumption per Control Unit (see chart 3 at the following page)
- Accumulator capacity / max. power consumption per Control Unit (see chart 3 at the following page)
- Dimensions of housing
- Cable entries

All values in the tables refer to the maximum assignment of the module inputs / outputs. The current values are given for maintaining the emergency power supply over a period of 72 hours. Other calculation bases on request.

The sum of the self-consumption of all modules in a Control Unit must not exceed the maximum permissible current of the Control Unit. To calculate the total power consumption, the individual consumption of the installed modules must be added.

The details of the outer diameter of cables refer to the cable types common in Germany. The wire cross-sections are given in mm<sup>2</sup>. To maintain the electrical protection class of the Control Unit housing, only one cable is permitted per cable entry.

For checking purposes, the total number of cables required must be determined in accordance with Table 1 and coordinated with the number of cable entries in the Control Units from Table 4.

Due to the hardware and software, the EMB8000 + is limited by the following points. Configuration using the software is guaranteed within these limits.

1. A maximum of 50 modules per Control Unit (including CM, excluding PM and PMEs).  
The following maximum number of modules of the same type are supported per control center (in the network).

Module	Maximum per Control Unit	Maximum per network
PME	2	60
PM	1	30
CM+	1	30
SM	20	570
DM	40	570
DMX	10	300
IDM	30	300
230 V DM Vent	20	570
RM6	20	570
WM	1	2
IMK	2	5

2. A maximum of 30 Control Unit in the network.
3. A maximum of 600 modules in the network (including CMs, excluding PMs and PMEs) e.g.: 30 Control Units with 20 modules or 12 Control Units with 50 modules.
4. 150 Can actuators (\*) are supported without blocking the triggering CMs. Each additional Can actuator results in a recording delay of 9 ms.  
(\* ) Can actuator is an actuator in another Control Unit than the one in which the sensor is located.

**CONFIGURATION + PARAMETERIZATION**

The basic configuration software for EMB 8000+ Control Units is available download on (free of charge for):

[www.aumueller-gmbh.de/downloads/software/...](http://www.aumueller-gmbh.de/downloads/software/)

For the configuration of special functions or integration of Control Units into networks, a software license (with extra costs) is required.

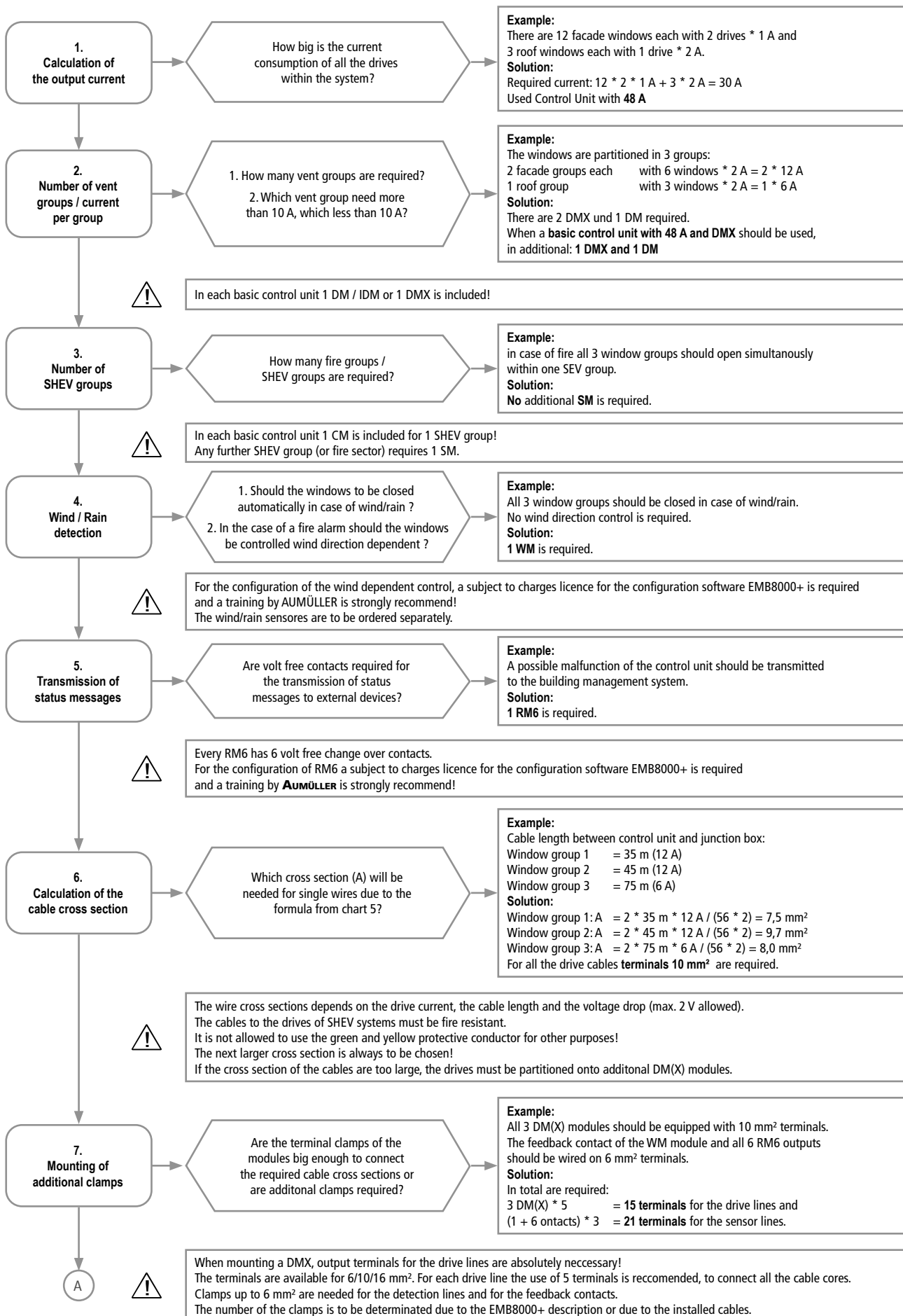
CHART 1: PARAMETER OF MODULES EMB 8000+												
Features					Cables for inputs and outputs							
Module	Module width [mm]	Module units [ME]	Internal current consumption [mA]	Cable entries when using all inputs/outputs [pcs.]	Smoke detectors, FAS	Manual detectors Break-glass units	Drive line	Ventilation button with display	Ventilation button w/o display, other inputs	Volt free contact, drive feedback signal	Wind/Rain/Wind direction	Power supply
PM	46	2	16,0	1								1
PME	46	2	0,0	0								
CM+	23	1	34,1	5	2	1			1	1		
SM	23	1	12,6	5	2	1			1	1		
DM	23	1	5,3	3			1	1		1		
230 V DM	23	1	7,0	3			1	1		1		
DMX	46	2	5,3	3			1	1		1		
IDM	23	1	6,0	5			1	1		1		
RM6	23	1	5,3	1						1-6		
IM-K	23	1	6,0	10								
WM	23	1	13,0	4					2	1	1	
Rec. Number of wires (w/o protective earth conductor)					4	8	4	8	4	4	7	3

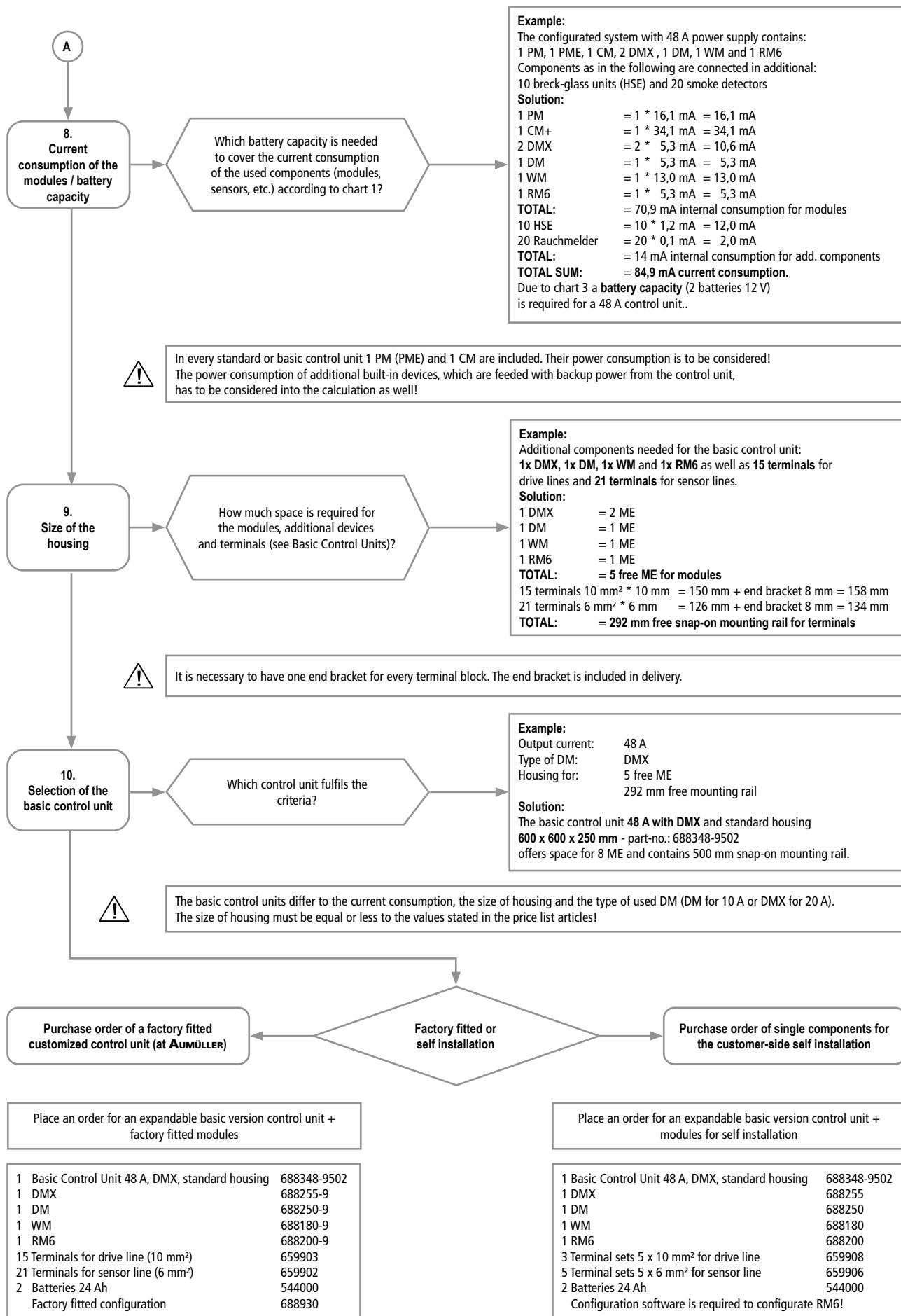
CHART 2: INTERNAL CURRENT CONSUMPTION OF BACKUP BATTERY POWERD DETECTORS		
Break-glass main unit	HSE	1,2 mA
Break-glass secondary unit	HSE-N	0,0 mA
Smoke detector	ORM	0,1 mA
Wind direction sensor	WRG	7,1 mA
BUS Break-glass main unit	BUS-HSE	2,8 mA
BUS Smoke detector	BUS-RM	1,0 mA

CHART 3: MAXIMUM CURRENT CONSUMPTION PER CONTROL UNIT					
PS / Battery	7 Ah	12 Ah	17 Ah	24 Ah	38 Ah
10 A	✗	120 mA	140 mA	240 mA	350 mA
24 A	✗	70 mA	120 mA	200 mA	300 mA
48 A	✗	✗	80 mA	170 mA	300 mA
72 A	✗	✗	✗	100 mA	300 mA

CHART 4: DIMENSIONS OF CONNECTION TERMINALS (pull spring feed through terminal blocks)				
Terminal size [mm]	6 mm <sup>2</sup>	10 mm <sup>2</sup>	16 mm <sup>2</sup>	End bracket
Cross section of the wire (rigid wire)	0,13-6 mm <sup>2</sup>	2,5-10 mm <sup>2</sup>	4-16 mm <sup>2</sup>	✗
External width (feed through terminal)	6 mm	10 mm	12 mm	8 mm
Width of set with 5 terminals + end bracket	38 mm	58 mm	✗	✗

CHART 5: CALCULATION OF DRIVE CABLES	
$A = 2 * L * I / (56 * \Delta U)$	
A	Cross section of wire [mm <sup>2</sup> ]
L	Length of the line [m]
I	Current of the drives [A]
$\Delta U$	Voltage drop on the line [V] = max. 2 V







ORDER DATA

EMB 8000+ 5 A (400 x 500 x 200 mm)

**Application:** Expandable basic version of modular control unit EMB8000+, factory fitted and fully wired for customer-side self-configuration.



**TECHNICAL DATA (Rated values)**

Operating voltage:	230 V AC (195 – 253 V AC, 50/60 Hz)
Max. power consumption:	322 W
Output voltage:	24 V DC (20 – 28 V DC / 0,5 Vpp)
Output current:	<b>5 A</b>
Housing:	surface mounting, steel sheet, RAL 7035 (light grey)
Dimensions (WxHxD):	<b>400 x 500 x 200 mm</b>
Delivery state:	
SHEV groups:	1
Vent groups:	1
Module equipment:	PM, CM, DM
Prepared for batteries:	max. 2 x 12 V / 12 Ah (Capacity acc. to equipment)

**5 A**

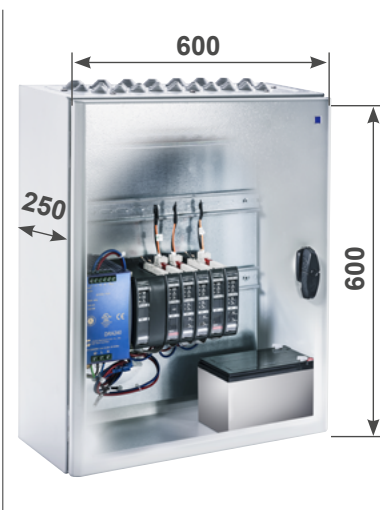
**Features:** The installer of the control unit has to examine and to respect on its sole responsibility that the total current consumption of the internal and external devices, the number of the used modules and cable entries match with the battery capacity and the system limitations.

VERSIONS

Part.-No.	equip module	free module units	free space			
688305-9501	PM, CM, DM	ME 8	HS 300 mm			
688305-9503	PM, CM, IDM	ME 8	HS 300 mm			

EMB 8000+ 5 A (600 x 600 x 250 mm)

**Application:** Expandable basic version of modular control unit EMB8000+, factory fitted and fully wired for customer-side self-configuration.



**TECHNICAL DATA (Rated values)**

Operating voltage:	230 V AC (195 – 253 V AC, 50/60 Hz)
Max. power consumption:	322 W
Output voltage:	24 V DC (20 – 28 V DC / 0,5 Vpp)
Output current:	<b>5 A</b>
Connections and functions:	depends on extension
Housing:	surface mounting, steel sheet, RAL 7035 (light grey)
Dimensions (WxHxD):	<b>600 x 600 x 250 mm</b>
<b>Delivery state:</b>	
SHEV groups:	1
Vent groups:	1
Prepared for batteries:	max. 2x 12 V / 12 Ah (Capacity acc. to equipment)

**5 A**

**Features:** The installer of the control unit has to examine and to respect on its sole responsibility that the total current consumption of the internal and external devices, the number of the used modules and cable entries match with the battery capacity and the system limitations.

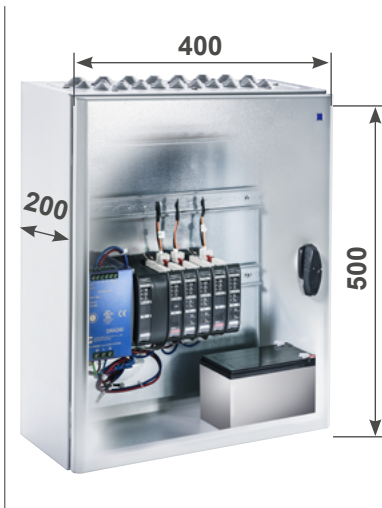
VERSIONS

Part.-No.	equip module	free module units	free space			
688305-9601	PM, CM, DM	ME 19	HS 500 mm			
688305-9603	PM, CM, IDM	ME 19	HS 500 mm			

### ORDER DATA

#### EMB 8000+ 10 A (400 x 500 x 200 mm)

**Application:** Expandable basic version of modular control unit EMB8000+, factory fitted and fully wired for customer-side self-configuration.



#### TECHNICAL DATA (Rated values)

Operating voltage: 230 V AC (195 – 253 V AC, 50/60 Hz)  
 Max. power consumption: 506 W  
 Output voltage: 24 V DC (20 – 28 V DC / 0,5 Vpp)  
 Output current: **10 A**  
 Connections and functions: depends on extension  
 Housing: surface mounting, steel sheet, RAL 7035 (light grey)  
 Dimensions (WxHxD): **400 x 500 x 200 mm**

**10 A**

#### Delivery state:

SHEV groups: 1  
 Vent groups: 1  
 Prepared for batteries: max. 2x 12 V / 12 Ah (Capacity acc. to equipment)

**Features:** The installer of the control unit has to examine and to respect on its sole responsibility that the total current consumption of the internal and external devices, the number of the used modules and cable entries match with the battery capacity and the system limitations.

#### VERSIONS

Part.-No.	equip module	free module units	free space			
688310-9501	PM, CM, DM	ME 7	HS 300 mm			
688310-9503	PM, CM, IDM	ME 7	HS 300 mm			

#### EMB 8000+ 10 A (600 x 600 x 250 mm)

**Application:** Expandable basic version of modular control unit EMB8000+, factory fitted and fully wired for customer-side self-configuration.



#### TECHNICAL DATA (Rated values)

Operating voltage: 230 V AC (195 – 253 V AC, 50/60 Hz)  
 Max. power consumption: 506 W  
 Output voltage: 24 V DC (20 – 28 V DC / 0,5 Vpp)  
 Output current: **10 A**  
 Connections and functions: depends on extension  
 Housing: surface mounting, steel sheet, RAL 7035 (light grey)  
 Dimensions (WxHxD): **600 x 600 x 250 mm**

**10 A**

#### Delivery state:

SHEV groups: 1  
 Vent groups: 1  
 Prepared for batteries: max. 2x 12 V / 38 Ah (Capacity acc. to equipment)

**Features:** The installer of the control unit has to examine and to respect on its sole responsibility that the total current consumption of the internal and external devices, the number of the used modules and cable entries match with the battery capacity and the system limitations.

#### VERSIONS

Part.-No.	equip module	free module units	free space			
688310-9601	PM, CM, DM	ME 19	HS 500 mm			
688310-9603	PM, CM, IDM	ME 19	HS 500 mm			

ORDER DATA

EMB 8000+ 24 A (600 x 600 x 250 mm)

**Application:** Expandable basic version of modular control unit EMB 8000+, factory fitted and fully wired for customer-side self-configuration.



**TECHNICAL DATA (Rated values)**

Operating voltage: 230 V AC (195 – 253 V AC, 50/60 Hz)  
 Max. power consumption: 805 W  
 Output voltage: 24 V DC (20 – 28 V DC / 0,5 Vpp)  
 Output current: **24 A**  
 Connections and functions: depends on extension  
 Housing: surface mounting, steel sheet, RAL 7035 (light grey)  
 Dimensions (WxHxD): **600 x 600 x 250 mm**

**24 A**

**Delivery state:**

SHEV groups: 1  
 Vent groups: 1  
 Prepared for batteries: max. 2x 12 V / 38 Ah (Capacity acc. to equipment)

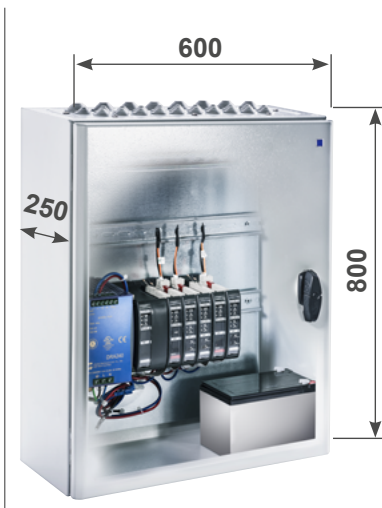
**Features:** The installer of the control unit has to examine and to respect on its sole responsibility that the total current consumption of the internal and external devices, the number of the used modules and cable entries match with the battery capacity and the system limitations.

VERSIONS

Part.-No.	equip module	free module units	free space			
688324-9501	PM, CM, DM	ME 19	HS 500 mm			
688324-9502	PM, CM, DMX	ME 18	HS 500 mm			
688324-9503	PM, CM, IDM	ME 19	HS 500 mm			

EMB 8000+ 24 A (600 x 800 x 250 mm)

**Application:** Expandable basic version of modular control unit EMB 8000+, factory fitted and fully wired for customer-side self-configuration.



**TECHNICAL DATA (Rated values)**

Operating voltage: 230 V AC (195 – 253 V AC, 50/60 Hz)  
 Max. power consumption: 805 W  
 Output voltage: 24 V DC (20 – 28 V DC / 0,5 Vpp)  
 Output current: **24 A**  
 Connections and functions: depends on extension  
 Housing: surface mounting, steel sheet, RAL 7035 (light grey)  
 Dimensions (WxHxD): **600 x 800 x 250 mm**

**24 A**

**Delivery state:**

SHEV groups: 1  
 Vent groups: 1  
 Prepared for batteries: max. 2x 12 V / 38 Ah (Capacity acc. to equipment)

**Features:** The installer of the control unit has to examine and to respect on its sole responsibility that the total current consumption of the internal and external devices, the number of the used modules and cable entries match with the battery capacity and the system limitations.

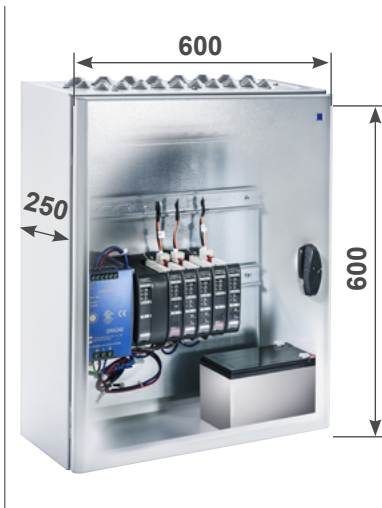
VERSIONS

Part.-No.	equip module	free module units	free space			
688324-9601	PM, CM, DM	ME 26	HS 500 mm			
688324-9602	PM, CM, DMX	ME 25	HS 500 mm			
688324-9603	PM, CM, IDM	ME 26	HS 500 mm			

### ORDER DATA

#### EMB 8000+ 48 A (600 x 600 x 250 mm)

**Application:** Expandable basic version of modular control unit EMB8000+, factory fitted and fully wired for customer-side self-configuration.



#### TECHNICAL DATA (Rated values)

Operating voltage: 230 V AC (195 – 253 V AC, 50/60 Hz)  
 Max. power consumption: 1610 W  
 Output voltage: 24 V DC (20 – 28 V DC / 0,5 Vpp)  
 Output current: **48 A**  
 Connections and functions: depends on extension  
 Housing: surface mounting, steel sheet, RAL 7035 (light grey)  
 Dimensions (WxHxD): **600 x 600 x 250 mm**

**48 A**

#### Delivery state:

SHEV groups: 1  
 Vent groups: 1  
 Prepared for batteries: max. 2x 12 V / 38 Ah (Capacity acc. to equipment)

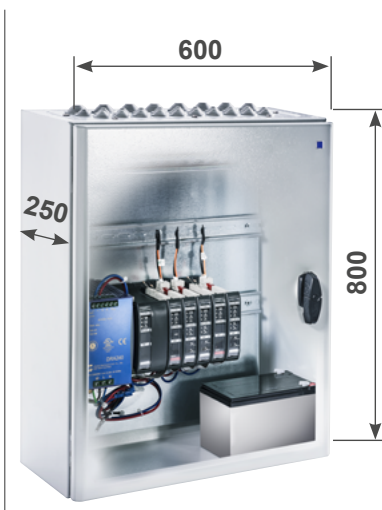
**Features:** The installer of the control unit has to examine and to respect on its sole responsibility that the total current consumption of the internal and external devices, the number of the used modules and cable entries match with the battery capacity and the system limitations.

#### VERSIONS

Part.-No.	equip module	free module units	free space			
688348-9501	PM, PME, CM, DM	ME 9	HS 500 mm			
688348-9502	PM, PME, CM, DMX	ME 8	HS 500 mm			
688348-9503	PM, PME, CM, IDM	ME 9	HS 500 mm			

#### EMB 8000+ 48 A (600 x 800 x 250 mm)

**Application:** Expandable basic version of modular control unit EMB8000+, factory fitted and fully wired for customer-side self-configuration.



#### TECHNICAL DATA (Rated values)

Operating voltage: 230 V AC (195 – 253 V AC, 50/60 Hz)  
 Max. power consumption: 1610 W  
 Output voltage: 24 V DC (20 – 28 V DC / 0,5 Vpp)  
 Output current: **48 A**  
 Connections and functions: depends on extension  
 Housing: surface mounting, steel sheet, RAL 7035 (light grey)  
 Dimensions (WxHxD): **600 x 800 x 250 mm**

**48 A**

#### Delivery state:

SHEV groups: 1  
 Vent groups: 1  
 Prepared for batteries: max. 2x 12 V / 38 Ah (Capacity acc. to equipment)

**Features:** The installer of the control unit has to examine and to respect on its sole responsibility that the total current consumption of the internal and external devices, the number of the used modules and cable entries match with the battery capacity and the system limitations.

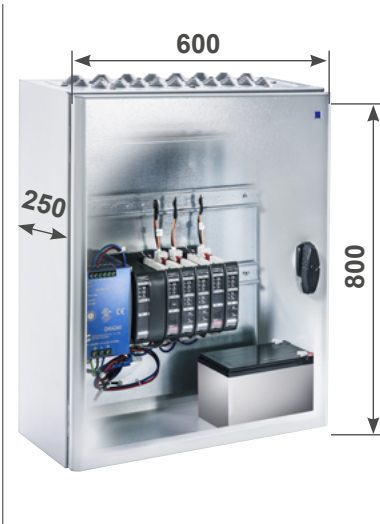
#### VERSIONS

Part.-No.	equip module	free module units	free space			
688348-9601	PM, PME, CM, DM	ME 17	HS 500 mm			
688348-9602	PM, PME, CM, DMX	ME 16	HS 500 mm			
688348-9603	PM, PME, CM, IDM	ME 17	HS 500 mm			

ORDER DATA

EMB 8000+ 72 A (600 x 800 x 250 mm)

**Application:** Expandable basic version of modular control unit EMB 8000+, factory fitted and fully wired for customer-side self-configuration.



**TECHNICAL DATA (Rated values)**

Operating voltage: 230 V AC (195 – 253 V AC, 50/60 Hz)  
 Max. power consumption: 2415 W  
 Output voltage: 24 V DC (20 – 28 V DC / 0,5 Vpp)  
 Output current: **72 A**  
 Connections and functions: depends on extension  
 Housing: surface mounting, steel sheet, RAL 7035 (light grey)  
 Dimensions (WxHxD): **600 x 800 x 250 mm**

**72 A**

**Delivery state:**

SHEV groups: 1  
 Vent groups: 1  
 Prepared for batteries: max. 2x 12 V / 38 Ah (Capacity acc. to equipment)

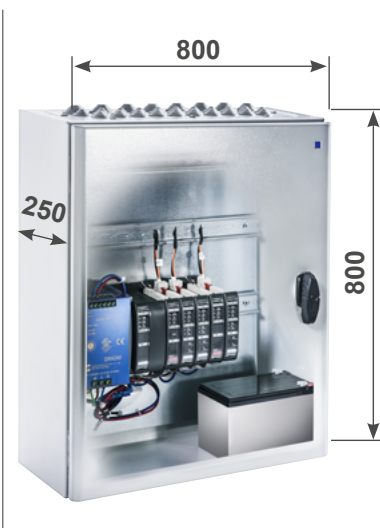
**Features:** The installer of the control unit has to examine and to respect on its sole responsibility that the total current consumption of the internal and external devices, the number of the used modules and cable entries match with the battery capacity and the system limitations.

VERSIONS

Part.-No.	equip module	free module units	free space			
688372-9501	PM, 2x PME, CM, DM	ME 15	HS 500 mm			
688372-9502	PM, 2x PME, CM, DMX	ME 14	HS 500 mm			
688372-9503	PM, 2x PME, CM, IDM	ME 15	HS 500 mm			

EMB 8000+ 72 A (800 x 800 x 250 mm)

**Application:** Expandable basic version of modular control unit EMB 8000+, factory fitted and fully wired for customer-side self-configuration.



**TECHNICAL DATA (Rated values)**

Operating voltage: 230 V AC (195 – 253 V AC, 50/60 Hz)  
 Max. power consumption: 2415 W  
 Output voltage: 24 V DC (20 – 28 V DC / 0,5 Vpp)  
 Output current: **72 A**  
 Connections and functions: depends on extension  
 Housing: surface mounting, steel sheet, RAL 7035 (light grey)  
 Dimensions (WxHxD): **800 x 800 x 250 mm**

**72 A**

**Delivery state:**

SHEV groups: 1  
 Vent groups: 1  
 Prepared for batteries: max. 2x 12 V / 38 Ah (Capacity acc. to equipment)

**Features:** The installer of the control unit has to examine and to respect on its sole responsibility that the total current consumption of the internal and external devices, the number of the used modules and cable entries match with the battery capacity and the system limitations.

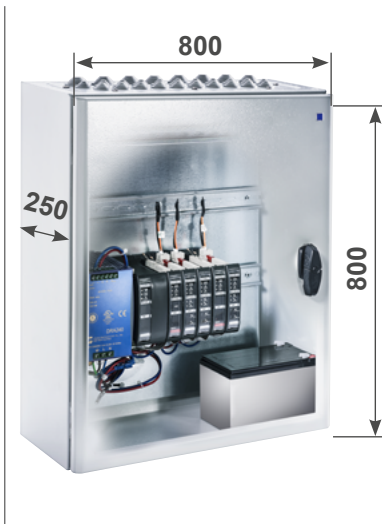
VERSIONS

Part.-No.	equip module	free module units	free space			
688372-9601	PM, 2x PME, CM, DM	ME 24	HS 700 mm			
688372-9602	PM, 2x PME, CM, DMX	ME 23	HS 700 mm			
688372-9603	PM, 2x PME, CM, IDM	ME 24	HS 700 mm			

### ORDER DATA

#### EMB 8000+ 96 A (800 x 800 x 250 mm)

**Application:** Expandable basic version of modular control unit EMB8000+, factory fitted and fully wired for customer-side self-configuration.



#### TECHNICAL DATA (Rated values)

Operating voltage: 400 V AC (50/60 Hz)  
 3 outer conductor

Max. power consumption: 3220 W

Output voltage: 24 V DC (20 – 28 V DC / 0,5 Vpp)

Output current: **96 A**

Connections and functions: depends on extension

Housing: surface mounting, steel sheet, RAL 7035 (light grey)

Dimensions (WxHxD): **800 x 800 x 250 mm**

**96 A**

#### Delivery state:

SHEV groups: 2

Vent groups: 12

Prepared for batteries: max. 4x 12 V / 38 Ah (Capacity acc. to equipment)

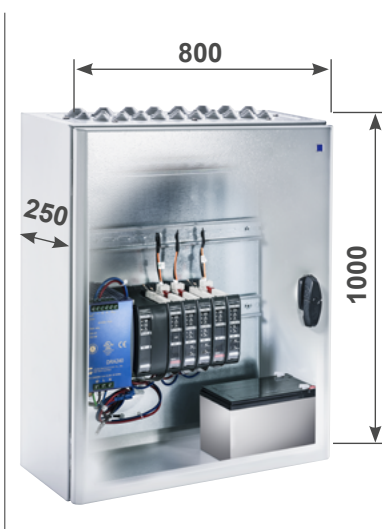
**Features:** The installer of the control unit has to examine and to respect on its sole responsibility that the total current consumption of the internal and external devices, the number of the used modules and cable entries match with the battery capacity and the system limitations.

### VERSIONS

Part.-No.	equip module	free module units	free space			
688396-9501	2x PM, 2x PME, 2x CM, 2x <b>DM</b>	ME <b>10</b>	HS <b>700</b> mm			
688396-9502	2x PM, 2x PME, 2x CM, 2x <b>DMX</b>	ME <b>9</b>	HS <b>700</b> mm			
688396-9503	2x PM, 2x PME, 2x CM, 2x <b>IDM</b>	ME <b>10</b>	HS <b>700</b> mm			

#### EMB 8000+ 96 A (800 x 1000 x 250 mm)

**Application:** Expandable basic version of modular control unit EMB8000+, factory fitted and fully wired for customer-side self-configuration.



#### TECHNICAL DATA (Rated values)

Operating voltage: 400 V AC (50/60 Hz)  
 3 outer conductor

Max. power consumption: 3220 W

Output voltage: 24 V DC (20 – 28 V DC / 0,5 Vpp)

Output current: **96 A**

Connections and functions: depends on extension

Housing: surface mounting, steel sheet, RAL 7035 (light grey)

Dimensions (WxHxD): **800 x 1000 x 250 mm**

**96 A**

#### Delivery state:

SHEV groups: 2

Vent groups: 2

Prepared for batteries: max. 4x 12 V / 38 Ah (Capacity acc. to equipment)

**Features:** The installer of the control unit has to examine and to respect on its sole responsibility that the total current consumption of the internal and external devices, the number of the used modules and cable entries match with the battery capacity and the system limitations.

### VERSIONS

Part.-No.	equip module	free module units	free space			
688396-9601	2x PM, 2x PME, 2x CM, 2x <b>DM</b>	ME <b>17</b>	HS <b>1000</b> mm			
688396-9602	2x PM, 2x PME, 2x CM, 2x <b>DMX</b>	ME <b>16</b>	HS <b>1000</b> mm			
688396-9603	2x PM, 2x PME, 2x CM, 2x <b>IDM</b>	ME <b>17</b>	HS <b>1000</b> mm			

ORDER DATA

DM – Drive-Module

**Application:** For the controlling of drives, gas-pressure generators and magnetic locks.



**TECHNICAL DATA (Rated values)**

Operating voltage:	24 V DC	<b>10 A</b>
Output voltage:	24 V DC (20 – 28 V DC / 0,5 Vpp)	
Internal consumption:	5,3 mA	
Output current:	<b>10 A</b>	
Housing (WxHxD):	100 x 120 x 22,5 mm, ABS, black	
Module units:	1 ME	
Inputs:	Vent. buttons (max. 10 pcs), feedback contact OPEN/CLOSE	
Outputs:	Drive line (gas-pressure generators / magnetic locks)	
Display:	Power, fault, alarm, running direction OPEN / CLOSE	
Control elements:	Front push button: OPEN / CLOSE	
Connections:	Plug-in terminals 1 mm <sup>2</sup> (rigid wire), Drives: 2,5 mm <sup>2</sup> , Blade terminals 6,3 mm: Power supply, socket and plug with cable for internal BUS	

**Features:** Drive line monitoring, fixing on 35-mm mounting rail. Configuration of the functional and performance features, which deviates from the standard systems via configuration software EMB 8000+.

VERSIONS

Part.-No.					
<b>688250</b>	Delivery in parcel	for customer self-installation			
<b>688250-9</b>	Module factory fitted	factory fitted and fully wired			

230 V-DM Vent – Drive-Modul Vent

**Application:** For the controlling of 230 V AC drives.



**TECHNICAL DATA (Rated values)**

Operating voltage:	230 V AC	<b>5 A</b>
Output voltage:	230 V AC	
Internal consumption:	7,0 mA	
Output current:	<b>5 A</b>	
Housing (WxHxD):	100 x 120 x 22,5 mm, ABS, black	
Module units:	1 ME	
Inputs:	Vent. buttons (max. 10 pcs), feedback contact OPEN/CLOSE	
Outputs:	Drive line	
Display:	Power, fault, alarm, running direction OPEN / CLOSE	
Control elements:	Front push button: OPEN / CLOSE	
Connections:	Plug-in terminals 1 mm <sup>2</sup> (rigid wire), Drives: 2,5 mm <sup>2</sup> , socket and plug with cable for internal BUS	
Built-in fuse:	5AT 5x20 mm	

**Features:** Fixing on 35-mm mounting rail. Configuration of the functional and performance features, which deviates from the standard systems via configuration software EMB 8000+.

VERSIONS

Part.-No.					
<b>688280</b>	Delivery in parcel	for customer self-installation			
<b>688280-9</b>	Module factory fitted	factory fitted and fully wired			

### ORDER DATA

#### DMX – Drive-Module

**Application:** For the controlling of drives, gas-pressure generators and magnetic locks.



#### TECHNICAL DATA (Rated values)

Operating voltage:	24 V DC	<b>20 A</b>
Output voltage:	24 V DC (20 – 28 V DC / 0,5 Vpp)	
Internal consumption:	5,3 mA	
Output current:	<b>20 A</b>	
Housing (WxHxD):	100 x 120 x 45 mm, ABS, black	
Module units:	2 ME	
Inputs:	Vent. buttons (max. 10 pcs), feedback contact OPEN/CLOSE	
Outputs:	Drive line (gas-pressure generators / magnetic locks)	
Display:	Power, fault, alarm, running direction OPEN / CLOSE	
Control elements:	Front push button: OPEN / CLOSE	
Connections:	Plug-in terminals 1 mm <sup>2</sup> (rigid wire), Blade terminals 6,3 mm: Drives + power supply, socket and plug with cable for internal BUS	

**Features:** Drive line monitoring, fixing on 35-mm mounting rail.  
Configuration of the functional and performance features, which deviates from the standard systems via configuration software EMB 8000+.

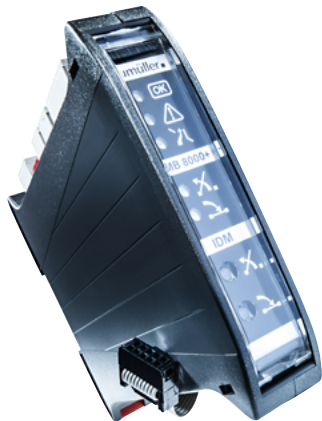
**Note:** Drive output for blade terminals 6,3 mm!  
Purchased parts package: 3 wires 2,5 mm<sup>2</sup>, 400 mm length with blade terminals.  
Terminals always have to be ordered separately! (See options)

#### VERSIONS

Part.-No.				
<b>688255</b>	Delivery in parcel	for customer self-installation		
<b>688255-9</b>	Module factory fitted	factory fitted and fully wired		

#### IDM - Intelligent-Drive-Module

**Application:** For operating intelligent **AUMÜLLER S12 / S3** drives up to max. **10 A** total current.



#### TECHNICAL DATA (Rated values)

Operating voltage:	24 V DC	<b>10 A</b>
Output voltage:	24 V DC (20 – 28 V DC / 0,5 Vpp)	
Internal consumption:	6 mA	
Output current:	<b>10 A</b>	
Housing (WxHxD):	100 x 120 x 22,5 mm, ABS, black	
Module units:	1 ME	
Inputs:	Vent. buttons (max. 10 pcs), feedback contact OPEN/CLOSE 0 - 10 V analog input	
Outputs:	Drive line ( <b>AUMÜLLER S12 / S3</b> )	
Display:	Power, fault, alarm, running direction OPEN / CLOSE	
Control elements:	Front push button: OPEN / CLOSE	
Connections:	Plug-in terminals 1 mm <sup>2</sup> (rigid wire), Drives: 2,5 mm <sup>2</sup> , Blade terminals 6,3 mm: Power supply, socket and plug with cable for internal BUS 0-10 V analog input	

**Features:** Drive line monitoring, fixing on 35-mm mounting rail.  
Configuration of the functional and performance features, which deviates from the standard systems via configuration software EMB 8000+.

#### VERSIONS

Part.-No.				
<b>688257</b>	Delivery in parcel	for customer self-installation		
<b>688257-9</b>	Module factory fitted	factory fitted and fully wired		



ORDER DATA

**SM – Sensor-Module**

**Application:** For the connecting of automatic smoke detectors and break-glass units.



**TECHNICAL DATA (Rated values)**

Operating voltage:	24 V DC
Detector line voltage:	24 V DC
Internal consumption:	12,6 mA
Housing (WxHxD):	100 x 120 x 22,5 mm, ABS, black
Module units:	1 ME
Inputs:	3 detector lines (max 10 detectors/line) Ventilation buttons (max. 10 pcs.)
Outputs:	1 feedback contact (change-over switch, 42 V / 0,5 A)
Display:	Power, fault, alarm
Control elements:	Front push button: Reset
Connections:	Plug-in terminals 1 mm <sup>2</sup> (rigid wire), socket and plug with cable for internal BUS

**Features:** Überwachte detector lines, fixing on 35-mm mounting rail.  
Configuration of the functional and performance features, which deviates from the standard systems via configuration software EMB 8000+.

**VERSIONS**

Part.-No.					
<b>688150</b>	Delivery in parcel	for customer self-installation			
<b>688150-9</b>	Module factory fitted	factory fitted and fully wired			

**RM6 – Relay-Module**

**Application:** For the transmitting of signals via volt free relay contacts.



**TECHNICAL DATA (Rated values)**

Operating voltage:	24 V DC
Internal consumption:	5,3 mA
Housing (WxHxD):	100 x 120 x 22,5 mm, ABS, black
Module units:	1 ME
Outputs:	6 volt free relay contacts (change-over switch, 42 V / 0,5 A)
Display:	Operating, Fault
Connections:	Plug-in terminals 1mm <sup>2</sup> (rigid wire), socket and plug with cable for internal BUS

**Features:** Fixing on 35-mm mounting rail.  
Configuration of the functional and performance features, which deviates from the standard systems via configuration software EMB 8000+.

**VERSIONS**

Part.-No.					
<b>688200</b>	Delivery in parcel	for customer self-installation			
<b>688200-9</b>	Module factory fitted	factory fitted and fully wired			

### ORDER DATA

#### IM-K – KNX-Module

**Application:** For communication between the **AUMÜLLER** control unit EMB 8000+ and the KNX-BUS-System.



#### TECHNICAL DATA (Rated values)

Operating voltage:	24 V DC
Internal consumption:	6 mA
BUS current:	9 mA
Data points:	up to 16 lines with up to 16 data points
Housing (WxHxD):	100 x 120 x 22,5 mm, ABS, black
Module units:	1 ME
Inputs:	6 analog inputs KNX sided, <b>KNX-BUS terminal</b>
Outputs:	3 x potential free Relay contacts via KNX
Display:	Operation, fault, KNX-programming LED
Control elements:	KNX-programming button
Connections:	Plug-in terminals 1mm <sup>2</sup> (rigid wire), socket and plug with cable for internal BUS

**Features:** Fixing on 35-mm mounting rail.  
Configuration of the functional and performance features, which deviates from the standard systems via configuration software EMB 8000+, and an ETS-Software for KNX programming.

#### VERSIONS

Part.-No.					
<b>688265</b>	Delivery in parcel	for customer self-installation			
<b>688265-9</b>	Module factory fitted	factory fitted and fully wired			

#### WM – Weather-Module

**Application:** For the connecting of weather sensors.



#### TECHNICAL DATA (Rated values)

Operating voltage:	24 V DC
Detector line voltage:	24 V DC
Internal consumption:	13,0 mA
Housing (WxHxD):	100 x 120 x 22,5 mm, ABS, black
Module units:	1 ME
Inputs:	Wind- and rain sensors, wind direction sensor, external signals
Outputs:	Volt free contact (change-over switch, 42 V / 0,5 A)
Display:	Power, fault, wind / rain activ
Connections:	Plug-in terminals 1,5 mm <sup>2</sup> (rigid wire)

**Features:** Fixing on 35-mm mounting rail.  
Configuration of the functional and performance features, which deviates from the standard systems via configuration software EMB 8000+.

#### VERSIONS

Part.-No.					
<b>688180</b>	Delivery in parcel	for customer self-installation			
<b>688180-9</b>	Module factory fitted	factory fitted and fully wired			

ORDER DATA

Part.-No.

**Control-Module CM**

**688120**

**Application:** Module for customer self-installation into the SHEV Control Unit EMB 8000+ for the connecting of automatic smoke detectors and break-glass units. Monitors three fire alarm lines for triggering and malfunction. Processes signals from ventilation buttons.



**TECHNICAL DATA (Rated values)**

Operating voltage:	24 V DC
Detector line voltage:	24 V DC
Internal consumption:	34,1 mA
Housing (WxHxD):	<b>100 x 120 x 22,5 mm</b> , ABS, black
Module units:	1 ME
Inputs:	3 Detector lines (max. 10 detectors / line) 1 BUS-detector lines (max. 30 detectors) 1 Ethernet port 1 CAN interface Ventilation push buttons (max. 10 pieces)
Outputs:	1 Feedback contact (1x change-over switch, 42 V / 0,5 A)
Display:	Power, fault, alarm
Control elements:	Front push button: Reset Plug-in terminals 1 mm <sup>2</sup> (rigid wire), socket and plug with cable for internal BUS

**Feature/Equipment**

- Fixing on 35-mm mounting rail.
- Parameterization of functional and performance features that differ from the standard via configuration software EMB 8000+.
- Belongs to the basic equipment of a Control Unit and must be connected directly with the Power-Module **PM** via **BUS** cable.

**Power-Module PM**

**688050**

**Application:** Module for customer self-installation into the SHEV Control Unit EMB 8000+ for monitoring of the main power supply. Monitors the main power supply. Checks the accumulator charging voltage. Switches to back-up accumulator operation during power failure.



**TECHNICAL DATA (Rated values)**

Operating voltage:	24 V DC
Internal consumption:	16,0 mA
Housing (WxHxD):	<b>100 x 120 x 45 mm</b> , ABS, black
Module units:	2 ME
Display:	Power, fault, status
Connections:	Plug-in terminals 1 mm <sup>2</sup> (rigid wire), Socket and plug with cable for internal BUS

**Feature/Equipment**

- Fixing on 35-mm mounting rail.
- Parameterization of functional and performance features that differ from the standard via configuration software EMB 8000+.
- Has a connection for a sensor „temperature-dependent charging of back-up accumulators“.

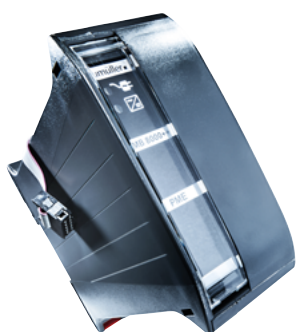
### ORDER DATA

Part.-No.

#### Power-Module PME

**688100**

**Application:** Module for customer self-installation into the SHEV Control Unit EMB 8000+ for monitoring of the main power supply. Monitors the main power supply for more than one switching power supply. Switches to back-up accumulator operation during power failure.



#### TECHNICAL DATA (Rated values)

Operating voltage:	24 V DC
Internal consumption:	0 mA
Housing (WxHxD):	100 x 120 x 45 mm, ABS, black
Module units:	2 ME
Display:	Power, status
Connections:	Socket and plug with cable for internal BUS

#### Feature/Equipment

- Fixing on 35-mm mounting rail.

**ORDER DATA**

TERMINALS TO SEND					
Part.-No.					
<b>659941</b>	Terminals-Set 5 x 2,5 mm <sup>2</sup>	for customer self-installation			
<b>659942</b>	Terminals-Set 5 x 6,0 mm <sup>2</sup>	for customer self-installation			
<b>659943</b>	Terminals-Set 5 x 10 mm <sup>2</sup>	for customer self-installation			
<b>659944</b>	Terminals-Set 5 x 16 mm <sup>2</sup>	for customer self-installation			

TERMINALS TO BE INSTALLED FROM THE FACTORY					
Part.-No.					
<b>659945-9</b>	Single terminal <b>DS</b>	2,5 mm <sup>2</sup>	factory fitted and fully wired		
<b>659946-9</b>	Single terminal	6 mm <sup>2</sup>	factory fitted and fully wired		
<b>659947-9</b>	Single terminal	10 mm <sup>2</sup>	factory fitted and fully wired		
<b>659948-9</b>	Single terminal	16 mm <sup>2</sup>	factory fitted and fully wired		
<b>669937-9</b>	Terminals-Set <b>ML</b>	5 x 6 mm <sup>2</sup>	factory fitted and fully wired		
<b>669938-9</b>	Terminals-Set <b>ML</b>	5 x 10 mm <sup>2</sup>	factory fitted and fully wired		
<b>669939-9</b>	Terminals-Set <b>ML</b>	5 x 16 mm <sup>2</sup>	factory fitted and fully wired		
<b>669949-9</b>	Terminals-Set <b>ML 230 V</b>	5 x 4 mm <sup>2</sup>	factory fitted and fully wired		
<b>669940-9</b>	Terminals-Set <b>HSE</b>	2,5 mm <sup>2</sup>	factory fitted and fully wired		
<b>669941-9</b>	Terminals-Set <b>RM</b>	2,5 mm <sup>2</sup>	factory fitted and fully wired		
<b>669942-9</b>	Terminals-Set <b>LT</b>	2,5 mm <sup>2</sup>	factory fitted and fully wired		
<b>669943-9</b>	Terminals-Set <b>LT with display</b>	2,5 mm <sup>2</sup>	factory fitted and fully wired		
<b>669944-9</b>	Terminals-Set <b>relays</b>	2,5 mm <sup>2</sup>	factory fitted and fully wired		
<b>669945-9</b>	Terminals-Set <b>blocking contact</b>	2,5 mm <sup>2</sup>	factory fitted and fully wired		
<b>669946-9</b>	Terminals-Set <b>BUS-HSE</b>	2,5 mm <sup>2</sup>	factory fitted and fully wired		
<b>669947-9</b>	Terminals-Set <b>WM</b>	2,5 mm <sup>2</sup>	factory fitted and fully wired		
<b>669948-9</b>	Terminals-Set <b>CAN</b>	2,5 mm <sup>2</sup>	factory fitted and fully wired		

SERVICE					
Part.-No.					
<b>240</b>	<b>Plan creation</b>	Wiring diagram per SHEV / ventilation group			
<b>688930</b>	<b>Programming</b>	Programming an EMB8000+ in the factory			
<b>SL125</b>	<b>Online commissioning support</b>	Price per hour			

### ORDER DATA

Part.-No.

#### Surge arrester Type 3

**Application:** Surge arrester Type 3 for Control Unit output 1-phase or 3-phase - with additional detector contact.  
For TS35; cross section of wire min. 1,5mm<sup>2</sup>



#### TECHNICAL DATA (Rated values)

Nominal voltage: 230 V AC  
Version: Type 3 / Class III  
Function display: green / red  
Ambient temperature range: -40°C .... +80°C  
Connection cross-section: max. 4 mm<sup>2</sup>  
Protection rating: IP20

### VERSIONS

Part.-No.					
<b>659977-9</b>	<b>1-phase</b>	Module factory fitted - factory fitted and fully wired			
<b>659978-9</b>	<b>3-phase</b>	Module factory fitted - factory fitted and fully wired			

#### Automatic circuit breaker

**Application:** Automatic circuit breaker for interrupting the circuit in the event of a short circuit or overload.  
In the versions 6 A or 16 A or 25 A.



#### TECHNICAL DATA (Rated values)

Nominal voltage: 230 V AC / 400 V AC (depending on the versions)  
Housing: Insulation group II, RAL 7035  
Ambient temperature range: -25°C .... +55°C  
Connection cross-section: flexible with wire end ferrule 0,75 ... 25 mm<sup>2</sup>  
(depending on the versions)  
Protection rating: IP20

### VERSIONS

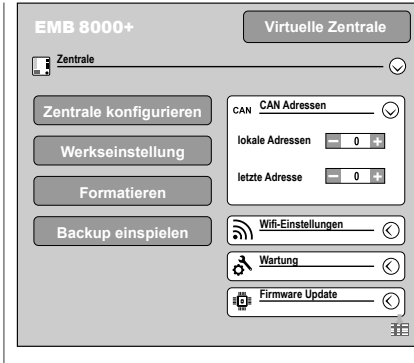
Part.-No.					
<b>669970-9</b>	<b>B 6A 1-pole</b>	Module factory fitted - factory fitted and fully wired			
<b>669971-9</b>	<b>B16A 1-pole</b>	Module factory fitted - factory fitted and fully wired			
<b>669972-9</b>	<b>B25A 1-pole</b>	Module factory fitted - factory fitted and fully wired			
<b>669973-9</b>	<b>B16A 3-pole</b>	Module factory fitted - factory fitted and fully wired			

**ORDER DATA**

Part.-No.

**Software licence EMB 8000+ Alpha**

**Application:** Software licence for configuration, integration in networks and maintenance of EMB 8000+.



**TECHNICAL DATA**

System requirements:

Microsoft® Windows 10 - 64 Bit

**Note**

**AUMÜLLER** grants licences only after attending a product training

**SOFTWARE / LICENSE / PROGRAMMING**

Licence for 1 month	688911			
Licence for 3 years	688913			

### ORDER DATA

Part.-No.

#### Accumulators

**Application:** Maintenance of standby operation of SHEV control units over a period of 72 hours of main power supply loss.



#### TECHNICAL DATA

Type:	Lead storage battery
Output voltage:	12 V DC
Capacity:	see order data
Lifetime:	4 years (normal conditions)
Connections:	7 – 12 Ah: blade terminals 4,8 mm 17 – 38 Ah: screw terminals M5
Housing:	plastic, impact- and break-resistant

#### Feature/Equipment

- Maintenance free operation, long lasting durability, high charging performance and long-cycle stability
- Disposal due to local, national or international rules (WEEE)

**NOTE:** Always 2 batteries are required per control unit!

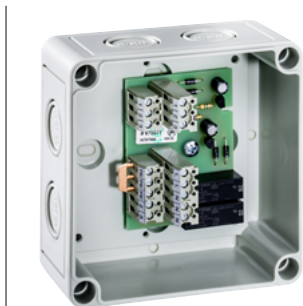
### OPTIONS

#### for control units with backup power supply

7 Ah, 12 V	1 Pcs.	<b>542000</b>		
12 Ah, 12 V	1 Pcs.	<b>542200</b>		
17 Ah, 12 V	1 Pcs.	<b>543000</b>		
24 Ah, 12 V	1 Pcs.	<b>544000</b>		
38 Ah, 12 V	1 Pcs.	<b>545000</b>		

#### Relay interface

**Application:** Relay for the connection of 230 V AC drives to a 24 V DC drive line, triggering by pole change of 24 V DC drive line.



#### TECHNICAL DATA (Rated values)

Operating voltage:	24 V DC, +/-20% (max. 2 Vpp)
Standby consumption:	<100 mA
Switching capacity:	230 V AC / 3 A
Drive type:	S2, S3, S12, MP
Ambient temperature range:	0 ... +70 °C
Housing:	Surface mounting, plastic, white
Dimensions (WxHxD):	98 x 98 x 58 mm
Connections:	Screw terminals 4,0 mm <sup>2</sup> (rigid wire)
Protection rating:	IP54

#### Feature/Equipment

- Connection to the **drive line** of SHEV or natural ventilation control units

### VERSIONS

Part.-No.				
<b>670071</b>	Delivery in parcel	for customer self-installation		
<b>670075-9</b>	Module factory fitted	factory fitted and fully wired. Including 5 terminals 4,0 mm <sup>2</sup>		

### ACCESSORIES

Part.-No.		VE		
<b>500001</b>	<b>Wall fixing brackets IP54</b>	4 piece		



**ORDER DATA**

		Part.-No.		
<b>Time switch</b>		<b>659927-9</b>		
<b>Application:</b> For the time controlled opening / closing of ventilation lines, with 30 day- and week-programm steps.				



**TECHNICAL DATA (Rated values)**

Operating voltage:	230 V AC
Contact type:	change-over switch
Switching capacity:	230 V AC / 16 A
Housing:	plastic, white, for 35 mm top rail
Dimensions (WxHxD):	17,6 x 63 x 90 mm
Connections:	Screw terminal 1,5 mm <sup>2</sup> (rigid wire)
Protection rating:	IP20

**Feature/Equipment**

- Connection to the **ventilation input** of SHEV or natural ventilation Control Units
- Module factory fitted / factory fitted and fully wired

<b>Temperature sensor</b>				
<b>Application:</b> Temperature sensor PM - conductor with connection piece for the Control Unit <b>EMB 8000+</b> .				



**TECHNICAL DATA (Rated values)**

Hardware:	REV.1
Bootloader:	BL V0.0.10
Application:	V0.0.17
Cable:	0,09mm <sup>2</sup> - AWG28; RM1,27
Certification:	CE

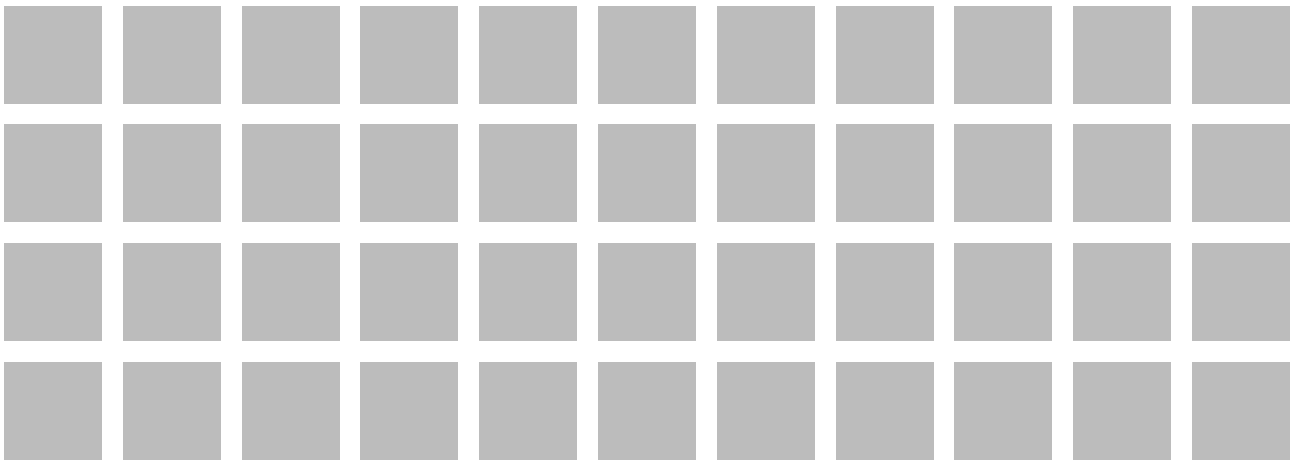
**Feature/Equipment**

- Conductor with connection piece

**VERSIONS**

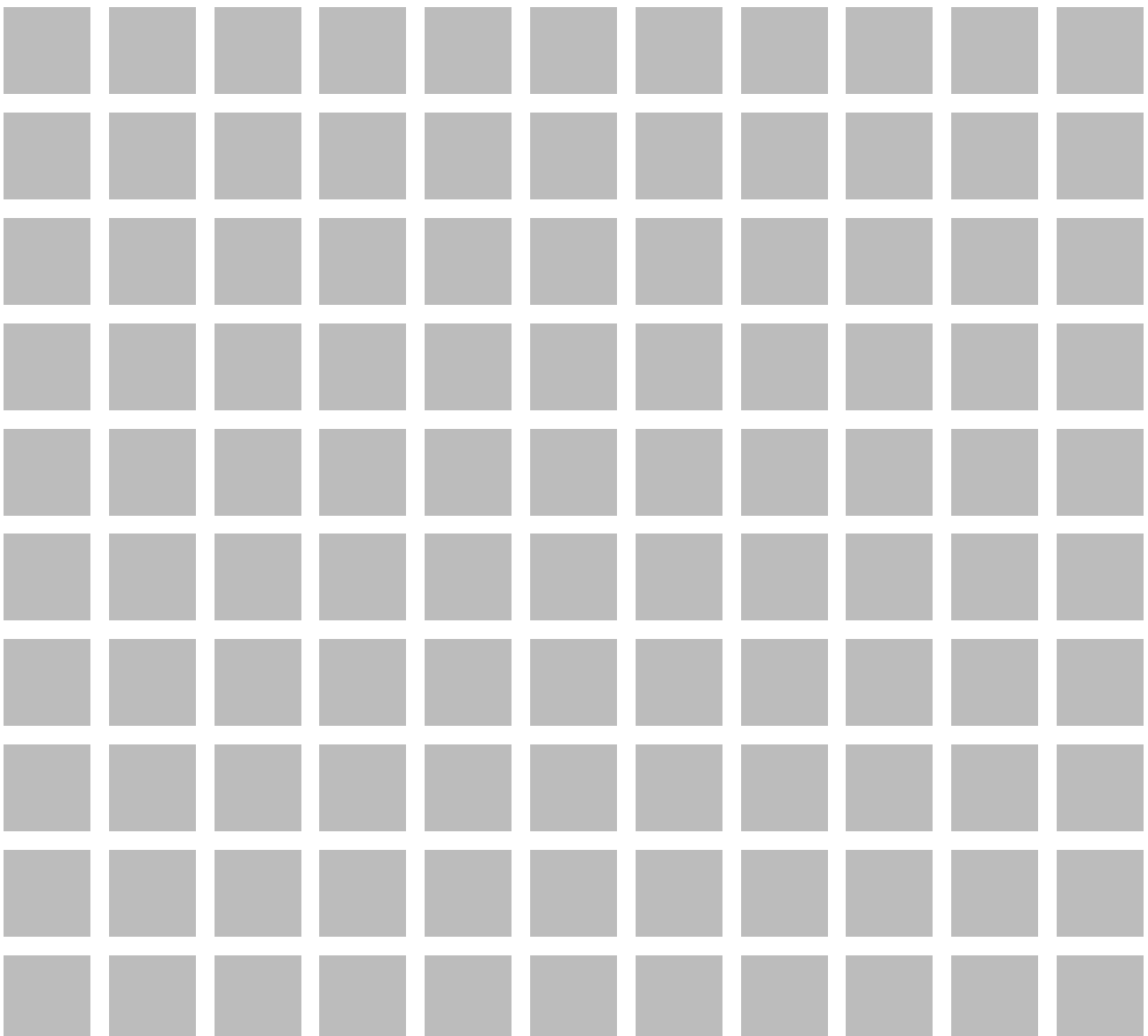
for SHEV Control Units of emergency power supply		Part.-No.		
1 piece	PM 0,4 m	<b>680055</b>		
1 piece	PM 0,9 m	<b>680056</b>		

For this product series, a Type III Environmental Product Declaration (EPD) was issued according to ISO 14025 and EN 15804. The LCA results of the different product types are listed at the end of this product catalogue. The EPD documents can be viewed or downloaded from our homepage [www.aumueller-gmbh.de](http://www.aumueller-gmbh.de).



# 3

## Accessories for SHEV Control Units





### HSE – Break-glass unit

- HSE – main control panel
- HSE-N – secondary control panel
- HSE – main control panel with buzzer
- BUS HSE – main control panel with BUS
- Frame – for flush mounting

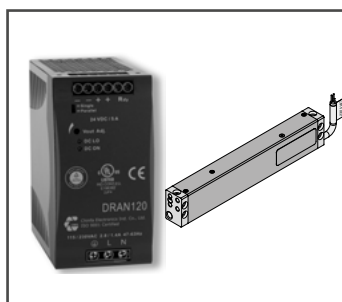
[To the product](#)



### Automatic detector

- Optical BUS smoke detector
- Optical smoke detector
- FAS Interface-Module
- Drive line end module
- Heat sensitive fire detector
- Heat sensitive detector clip 70°C

[To the product](#)



### Power supply

- NT-DRA240-10 – Power supply 230 V AC / 24 V DC, 5 A
- NT-DRA240-10 – Power supply 230 V AC / 24 V DC, 10 A
- NT-DRA480-20 – Power supply 230 V AC / 24 V DC, 20 A
- External Power Supply Laser Sensor

[To the product](#)



### Accessories for HSE (Break-glass unit)

- HSE-Empty Housing - Break-glass unit
- Key for plastic Break-glass unit
- Key for aluminium Break-glass unit
- Replacement glass panes for Break-glass unit
- Circuit board for Break-glass unit - ABS
- Circuit board for Break-glass unit

[To the product](#)

### ORDER DATA

Part.-No.

#### HSE – Break-glass unit main control panel

**Application:** Break-glass unit with indicators for manual activation of the Emergency OPEN function and the CLOSE function of a SHEV group via the detector lines of a SHEV Control Unit.



#### TECHNICAL DATA (Rated values)

Operating voltage:	24 V DC
Ambient temperature range:	-5°C ... +40°C
Dimensions (WxHxD):	130 x 130 x 32 mm
Connections:	Spring terminals, 0,5 mm <sup>2</sup> (rigid wire)
Protection rating:	IP30
Display:	Emergency OPEN, power, fault
Control elements:	Button for Emergency OPEN / Button for CLOSE

#### Feature/Equipment

- Lockable, glazed door (including key)
- **Connection to the detector line input**
- **The termination resistance is activated or deactivated using a DIP switch**

**NEW**

#### VERSIONS

HSE orange	Aluminium	(similar to RAL 2011)	<b>528400</b>		
HSE red	Aluminium	(similar to RAL 3000)	<b>528401</b>		
HSE yellow	Aluminium	(similar to RAL 1018)	<b>528402</b>		
HSE blue	Aluminium	(similar to RAL 5015)	<b>528403</b>		
HSE grey	Aluminium	(similar to RAL 7035)	<b>528404</b>		

#### HSE – Break-glass unit main control panel

**Application:** Break-glass unit with indicators for manual activation of the Emergency OPEN function and the CLOSE function of a SHEV group via the detector lines of a SHEV Control Unit.



#### TECHNICAL DATA (Rated values)

Operating voltage:	24 V DC
Ambient temperature range:	-5°C ... + 40°C
Housing:	<b>Surface mounting, plastic (ABS)</b>
Dimensions (WxHxD):	130 x 130 x 32 mm
Connections:	Screw terminal, 1,0 mm <sup>2</sup> (rigid wire)
Protection rating:	IP30
Display:	Emergency OPEN, power, fault
Control elements:	Button for Emergency OPEN / Button for CLOSE

**ABS**

#### Feature/Equipment

- Lockable, glazed door (including key)
- **Connection to the detector line input**
- HSE orange: **VdS certification no. G 501006**

**DISCONTINUED PRODUCT**

#### VERSIONS

HSE red	(similar to RAL 3000)	<b>528691</b>		
HSE yellow	(similar to RAL 1018)	<b>528692</b>		
HSE grey	(similar to RAL 7035)	<b>528693</b>		
HSE blue	(similar to RAL 5015)	<b>528694</b>		
HSE orange	(similar to RAL 2011)	<b>528695</b>		

ORDER DATA

Part.-No.

HSE-N – Break-glass unit secondary control panel

**Application:** Break-glass unit with indicators for manual activation of the Emergency OPEN function of a SHEV group via the detector lines of a SHEV Control Unit



**TECHNICAL DATA (Rated values)**

Operating voltage: 24 V DC  
 Ambient temperature range: -5°C ... +40°C  
 Dimensions (WxHxD): 130 x 130 x 32 mm  
 Connections: Spring terminals, 0,5 mm<sup>2</sup> (rigid wire)  
 Protection rating: IP30  
 Display: Emergency OPEN  
 Control elements: Button for Emergency OPEN

**Feature/Equipment**

- Lockable, glazed door (including key)
- **Connection to the detector line input**
- **The termination resistance is activated or deactivated using a DIP switch**

**NEW**

**VERSIONS**

HSE-N orange	Aluminium	(similar to RAL 2011)	528410		
HSE-N red	Aluminium	(similar to RAL 3000)	528411		
HSE-N yellow	Aluminium	(similar to RAL 1018)	528412		
HSE-N blue	Aluminium	(similar to RAL 5015)	528413		
HSE-N grey	Aluminium	(similar to RAL 7035)	528414		

HSE-N – Break-glass unit secondary control panel

**Application:** Break-glass unit with indicators for manual activation of the Emergency OPEN function of a SHEV group via the detector lines of a SHEV Control Unit



**TECHNICAL DATA (Rated values)**

Operating voltage: 24 V DC  
 Ambient temperature range: -5°C ... + 40°C  
 Housing: **Surface mounting, plastic (ABS)**  
 Dimensions (WxHxD): 130 x 130 x 32 mm  
 Connections: Screw terminal, 1,0 mm<sup>2</sup> (rigid wire)  
 Protection rating: IP30  
 Display: Emergency OPEN  
 Control elements: Button for Emergency OPEN

**ABS**

**Feature/Equipment**

- Lockable, glazed door (including key)
- **Connection to the detector line input**
- HSE orange: **VdS certification no. G 501006**

**DISCONTINUED PRODUCT**

**VERSIONS**

HSE-N red	(similar to RAL 3000)	525001		
HSE-N yellow	(similar to RAL 1018)	525002		
HSE-N grey	(similar to RAL 7035)	525003		
HSE-N blue	(similar to RAL 5015)	525004		
HSE-N orange	(similar to RAL 2011)	525005		

### ORDER DATA

Part.-No.

#### HSE – Break-glass unit main control panel - buzzer

**Application:** Break-glass unit with built-in buzzer and indicators and buttons for the manual activation of the Emergency OPEN function and Emergency CLOSE function of a SHEV group via the detector lines of a SHEV Control Unit.  
Signal for faults and alarm selectable via DIP switches.



#### TECHNICAL DATA (Rated values)

Operating voltage: 24 V DC  
Ambient temperature range: -5°C ... +40°C  
Dimensions (WxHxD): 130 x 130 x 32 mm  
Connections: Spring terminals, 0,5 mm<sup>2</sup> (rigid wire)  
Protection rating: IP30  
Display: Emergency OPEN, power, fault  
Control elements: Button for Emergency OPEN / Button for CLOSE

**SUMMER**

#### Feature/Equipment

- Built-in buzzer
- Lockable, glazed door (including key)
- **Connection to the detector line input**
- **The termination resistance is activated or deactivated using a DIP switch**
- **Signal for faults and alarm selectable via DIP switches.**

**NEW**

#### VERSIONS

HSE-Summer orange	Aluminium	(similar to RAL 2011)	528420		
HSE-Summer red	Aluminium	(similar to RAL 3000)	528421		
HSE-Summer yellow	Aluminium	(similar to RAL 1018)	528422		
HSE-Summer blue	Aluminium	(similar to RAL 5015)	528423		
HSE-Summer grey	Aluminium	(similar to RAL 7035)	528424		

#### HSE – Break-glass unit main control panel - buzzer

**Application:** Break-glass unit with built-in buzzer and indicators and buttons for the manual activation of the Emergency OPEN function and Emergency CLOSE function of a SHEV group via the detector lines of a SHEV Control Unit.



#### TECHNICAL DATA (Rated values)

Operating voltage: 24 V DC  
Ambient temperature range: -5°C ... + 40°C  
Housing: Surface mounting, plastic (ABS)  
Dimensions (WxHxD): 130 x 130 x 32 mm  
Connections: Screw terminal, 1,0 mm<sup>2</sup> (rigid wire)  
Protection rating: IP30  
Display: Emergency OPEN, power, fault  
Control elements: Button for Emergency OPEN / Button for CLOSE

**ABS**

**SUMMER**

#### Feature/Equipment

- Built-in buzzer
- Lockable, glazed door (including key)
- **Connection to the detector line input**
- Settings via DIP switch: Warning sound in case of fault and / or SHEV

**DISCONTINUED PRODUCT**

#### VERSIONS

HSE red	(similar to RAL 3000)	528711		
HSE yellow	(similar to RAL 1018)	528712		
HSE grey	(similar to RAL 7035)	528713		
HSE blue	(similar to RAL 5015)	528714		
HSE orange	(similar to RAL 2011)	528715		

ORDER DATA

Part.-No.

HSE – Break-glass unit main control panel

**Application:** Break-glass unit with indicators and buttons for the manual activation of the Emergency OPEN function and CLOSE function of a SHEV group, for connection in the BUS line of a control unit.



**TECHNICAL DATA (Rated values)**

Operating voltage:	24 V DC	<b>ABS</b>
Ambient temperature range:	-5°C ... + 40°C	
Housing:	<b>Surface mounting, plastic (ABS)</b>	<b>BUS</b>
Dimensions (WxHxD):	130 x 130 x 32 mm	
Connections:	BUS terminal, 2 x 0,8 mm <sup>2</sup>	
Protection rating:	IP30	
Display:	Emergency OPEN, power, fault	
Control elements:	Button for Emergency OPEN / Button for CLOSE	
Connection possibility:	Ventilation push button - input Screw terminal, 1,0 mm <sup>2</sup> (rigid wire)	

**Feature/Equipment**

- Lockable, glazed door (including key)
- Connection to the detector line input

**DISCONTINUED PRODUCT**

**VERSIONS**

HSE red	(similar to RAL 3000)	528491		
HSE yellow	(similar to RAL 1018)	528492		
HSE grey	(similar to RAL 7035)	528493		
HSE blue	(similar to RAL 5015)	528494		
HSE orange	(similar to RAL 2011)	528495		

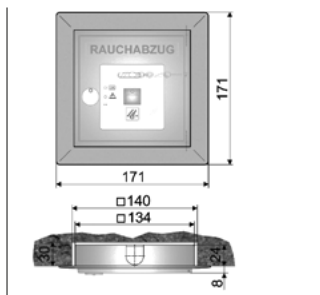
### ORDER DATA

Part.-No.

HSE – Frame for flush mounting

528015

**Application:** Flush mounting of break-glass units.



#### TECHNICAL DATA

Housing:  
 Dimensions (WxHxD):  
 Surface:  
 Installation Dimensions:

**Surface mounting, steel sheet**  
 171 x 171 x 26 mm  
 powder-coated in light grey w/o structure  
 140 x 140 x 30 mm

**ALU**

#### Feature/Equipment

- Suitable for break-glass units (130 x 130 x 32 mm) - until 2023 only for HSE in version „ABS“ (plastic housing)  
 - from 2023 for all HSE



ORDER DATA

		Part.-No.	
<b>Optical BUS-smoke detector</b>	<b>531530</b>		
<b>Application:</b> BUS-smoke detector for the automatic early detection of fire for controlling of the EMERGENCY OPEN function via the BUS detector line of the <b>EMB 8000+</b> , with smoke generation in the monitored area.			



**TECHNICAL DATA (Rated values)**

Measuring element:	photo electric / scattered light principle
Operating voltage:	24 V DC via BUS
Standby current:	< 110 µA
Housing:	Surface mounting, plastic (ABS), signal white (similar to RAL 9003)
Dimensions (WxHxD):	Ø120 x 60 mm
Connections:	Screw terminals 1,0 mm <sup>2</sup> (rigid wire)
Protection rating:	IP30
Ambient temperature range:	-10°C ... +55°C
Display:	Alarm LED

**BUS**

**Feature/Equipment**

- Fire algorithms for avoiding false alarms, automatic alarm threshold tracking
- According to EN 54-7, Connection to the **BUS detector line input**
- **VdS certification no. G 209219**

<b>Optical smoke detector</b>	<b>531520</b>		
<b>Application:</b> Smoke detector for the automatic early detection of fire for controlling of the EMERGENCY OPEN function via a detector line of SHEV control units, with smoke generation in the monitored area.			



**TECHNICAL DATA (Rated values)**

Measuring element:	photo electric / scattered light principle
Operating voltage:	8,5 – 33 V DC
Standby current:	< 100 µA
Housing:	Surface mounting, plastic (ABS), pearl white
Dimensions (WxHxD):	Ø100 x 50 mm
Connections:	Screw terminals 1,0 mm <sup>2</sup> (rigid wire)
Protection rating:	IP23D
Display:	Alarm LED

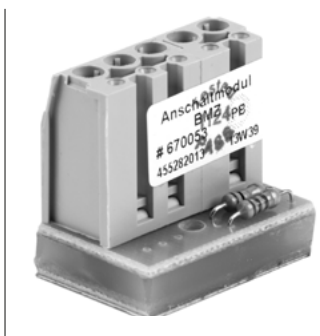
**Feature/Equipment**

- Fire algorithms for avoiding false alarms, automatic alarm threshold tracking
- According to EN 54-7, connection to the **detector line input**

**ACCESSORIES**

Ball protection (chromed steel grid) e.g. use in sporthalls	<b>513546</b>		
---	---------------	--	--

<b>FAS Interface-Module</b>	<b>670053</b>		
<b>Application:</b> Module for the automatic control of the emergency open function via volt free contact of a fire alarm system.			



**TECHNICAL DATA (Rated values)**

Operating voltage:	24 V DC
Standby consumption:	<10 mA
Ambient temperature range:	0 ... +40 °C
Housing:	w/o, equipped circuit board
Dimensions (WxHxD):	27 x 19 x 13 mm
Connections:	Screw terminal 1,5 mm <sup>2</sup> (rigid wire)
FAS contact:	Normal open switch at alarm status

**Feature/Equipment:**

- For connection to **detector line input** of SHEV control units, with line monitoring between control unit and module

### ORDER DATA

		Part.-No.	
<b>Drive line end module</b>		<b>670052</b>	
<b>Application:</b> For installation in the last or only junction box for the line monitoring of drive line.			



#### TECHNICAL DATA (Rated values)

Operating voltage:	24 V DC (+/-5%)
Standby consumption:	<10 mA
Ambient temperature range:	0 ... +70 °C
Housing:	w/o, equipped circuit board
Dimensions (WxHxD):	27 x 19 x 13 mm
Connections:	3 single cores

#### Feature/Equipment

- For connection into **drive line** of SHEV control units

<b>Heat sensitive fire detector</b>				
<b>Application:</b> Heat detector for the automatic control of the emergency open function of a SHEV group of a SHEV control unit.				



#### TECHNICAL DATA (Rated values)

Measuring element:	Bimetal switch
Operating voltage:	24 V DC
Contact load:	48 V DC / 0,5 A
Standby current:	< 10 mA
Housing:	Surface mounting, plastic (ABS), white
Dimensions (WxHxD):	Ø56 x 77 mm
Connections:	Screw terminals 1,0 mm² (rigid wire)
Protection rating:	IP20

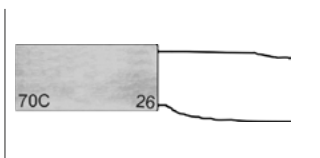
#### Feature/Equipment

- With base for surface mounting

#### VERSIONS

Connection in detector line	NO switch 70°C	<b>533205</b>		
Connection in drive line	NC switch 70°C	<b>533200</b>		

<b>Heat sensitive detector clip 70°C</b>		<b>533201</b>		
<b>Application:</b> Heat detector for controlling of the emergency open function of a SHEV group, for connection in the drive line.				



Measuring element:	Bimetal switch with ceramic housing
Operating voltage:	24 V DC
Contact type:	<b>NC switch</b> at 70°C
Contact load:	48 V DC / 0,5 A
Standby current:	< 10 mA

#### Feature/Equipment

- No housing, connection in the **monitoring line of the drive output** of a SHEV control unit

## ORDER DATA

Part.-No.

**NT-DRAN120-5 – Power supply 230 V AC / 24 V DC, 5 A****680005**

**Application:** Switching power supply for fixing on 35-mm mounting rail or external power supply of the ventilation modules LZA and LZH.

**TECHNICAL DATA**

Operating voltage: 230 V AC (195 – 253 V AC, 50/60 Hz)  
 Power consumption max. : 322 W  
 Output voltage: 24 V DC (20 – 28 V DC / 0,5 Vpp)  
 Output current: **5 A**  
 Ambient temperature range: -5°C ... + 40°C  
 Housing: for fixing on 35-mm mounting rail  
 Dimensions (WxHxD): 65 x 95 x 123 mm

**Feature/Equipment**

- For installation in a control cabinet or comparable housing.

**NT-DRA240-10 – Power supply 230 V AC / 24 V DC, 10 A****680010**

**Application:** Switch mode power supply for power supply and control of drives 24 V DC for daily ventilation, with one ventilation line. Control in the OPEN / CLOSE direction via the 230 V AC mains voltage.

**TECHNICAL DATA**

Operating voltage: 230 V AC (195 - 253 V AC, 50/60 Hz)  
 Output voltage: 24 V DC (20 – 28 V DC / 0,5 Vpp)  
 Output current: **10 A**  
 Ambient temperature range: -5°C ... + 40°C  
 Housing: for fixing on 35-mm mounting rail  
 Dimensions (WxHxD): 125 x 84 x 124 mm

**Feature/Equipment**

- For installation in a control cabinet or comparable housing.

**NT-DRA480-20 – Power supply 230 V AC / 24 V DC, 20 A****680024**

**Application:** Switch mode power supply for power supply and control of drives 24 V DC for daily ventilation, with one ventilation line. Control in the OPEN / CLOSE direction via the 230 V AC mains voltage.

**TECHNICAL DATA**

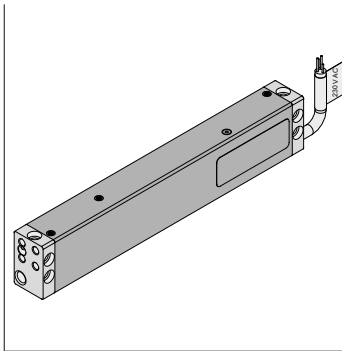
Operating voltage: 230 V AC (195 - 253 V AC, 50/60 Hz)  
 Output voltage: 24 V DC (20 – 28 V DC / 0,5 Vpp)  
 Output current: **20 A**  
 Ambient temperature range: -5°C ... + 40°C  
 Housing: for fixing on 35-mm mounting rail  
 Dimensions (WxHxD): 125 x 176 x 124 mm

**Feature/Equipment**

- For installation in a control cabinet or comparable housing.

### ORDER DATA

		Part.-No.	
<b>External Power Supply Laser Sensor</b>		<b>680027</b>	
<b>Application:</b> External Power Supply NT-S-2 KS2/KSA - 230 V AC / 24 V DC factory installed in KS2 chain drive housing. For power supply and control of SKL3 flatscan and flat scan sensor.			



#### TECHNICAL DATA (Rated values)

Operating voltage:	230 V AC (195 – 253 V AC, 50/60 Hz)
Record measurement:	30 W
Output voltage:	24 V DC (20 – 28 V DC / 2 Vpp)
Output current:	2,0 A
Output:	1x drive line - 24 V DC / 2,0 A 1x continuous current - 24 V DC / 0,2 A
Connections:	24 V DC drive, up to max. 2,0 A 24 V DC continuous current, up to max. 0,2 A
Connection cable:	non-halogen, grey 6 x 0,75 mm <sup>2</sup> , length 3 meters maximum extendable to 25 meters in length
Housing:	Aluminium natural anodized
Dimensions (WxHxD):	41 x 26 x 230 mm
Connection terminals:	Screw terminals 1,0 mm <sup>2</sup> (rigid wire)
Protection rating:	IP 32

#### Feature/Equipment

- Factory installed in the housing of a KS2 chain drive.

## ORDER DATA

Part.-No.

HSE-Empty Housing - Break-glass unit

Application: HSE-Empty Housing with lockable, glazed door - including key.



## TECHNICAL DATA (Rated values)

Dimensions (WxHxD): 130 x 130 x 32 mm

New

## VERSIONS

HSE-Empty Housing orange	Aluminium	(similar to RAL 2011)	528480			
HSE-Empty Housing red	Aluminium	(similar to RAL 3000)	528481			
HSE-Empty Housing yellow	Aluminium	(similar to RAL 1018)	528482			
HSE-Empty Housing blue	Aluminium	(similar to RAL 5015)	528483			
HSE-Empty Housing grey	Aluminium	(similar to RAL 7035)	528484			

HSE-Empty Housing - Break-glass unit

Application: HSE-Empty Housing with lockable, glazed door - including key.



## TECHNICAL DATA (Rated values)

Housing: Surface mounting, plastic (ABS)

Dimensions (WxHxD): 130 x 130 x 32 mm

ABS

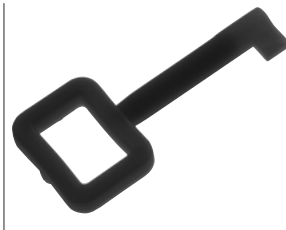
DISCONTINUED PRODUCT

## VERSIONS

HSE-Empty Housing red	(similar to RAL 3000)	528001			
HSE-Empty Housing yellow	(similar to RAL 1018)	528002			
HSE-Empty Housing grey	(similar to RAL 7035)	528003			
HSE-Empty Housing blue	(similar to RAL 5015)	528004			
HSE-Empty Housing orange	(similar to RAL 2011)	528009			

### ORDER DATA

		Part.-No.		
<b>Key for plastic Break-glass unit (HSE plastic button)</b>		<b>527007</b>		
<b>Application:</b>	The plastic Break-glass units (HSE plastic button) have a lockable door. The key is used to open or close this door.			



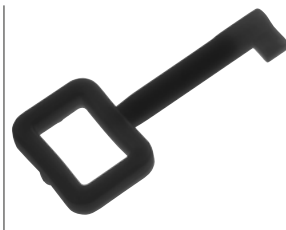
#### TECHNICAL DATA

Function:	for plastic Break-glass unit (HSE plastic button)
Material:	Polyamid PA 6.6
Colour:	white
Key:	1 piece

#### Feature/Equipment

- Suitable for all **AUMÜLLER** plastic Break-glass unit (HSE plastic buttons)

<b>Key for aluminium Break-glass unit (HSE aluminium button)</b>		<b>527008</b>		
<b>Application:</b>	The aluminium Break-glass units (HSE aluminium button) have a lockable door. The key is used to open or close this door.			



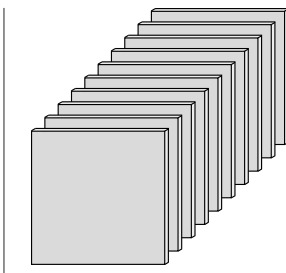
#### TECHNICAL DATA

Function:	for aluminium Break-glass unit (HSE aluminium button)
Material:	Metal
Type:	Schl-HM/10
Keys:	10 pieces

#### Feature/Equipment

- Suitable for all **AUMÜLLER** aluminium Break-glass unit (HSE aluminium buttons)

<b>Replacement glass panes for Break-glass unit (HSE button)</b>		<b>527002</b>		
<b>Application:</b>	Panels of glass for replacement on site.			



#### TECHNICAL DATA

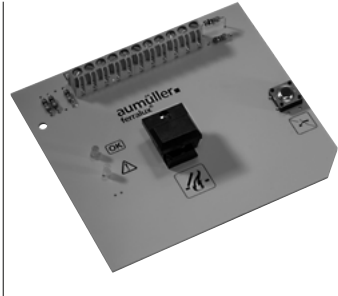
Dimensions (W x H x D):	80 x 80 x 0,7
Glass panes:	10 pieces

#### Feature/Equipment

- Suitable for all **AUMÜLLER** Break-glass unit (HSE buttons)

ORDER DATA

				Part.-No.
<b>Circuit board for Break-glass unit ABS (HSE button ABS)</b>				
<b>Application:</b> Circuit board for Break-glass unit (HSE button) - with logo „Ferralux“. Can be exchanged on site - without subsequent processing.				



**TECHNICAL DATA**

Type:

**Ferralux DIN99-1 A-Z /A-B-S**, is equipped  
Installation in an ABS housing

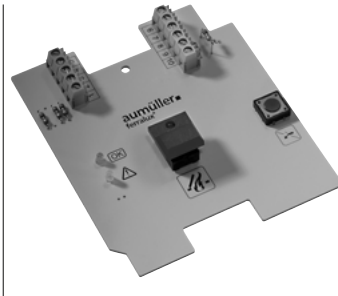
**ABS**

For housing type:

Plastic

<b>VERSIONS</b>				
<b>with certification VdS</b>		<b>528785</b>		
<b>without certification VdS</b>		<b>528784</b>		

<b>Circuit board for Break-glass unit (HSE button)</b>				<b>528782</b>
<b>Application:</b> Circuit board for Break-glass unit (HSE button) - with logo „Ferralux“. Can be exchanged on site - without subsequent processing.				



**TECHNICAL DATA**

Type:

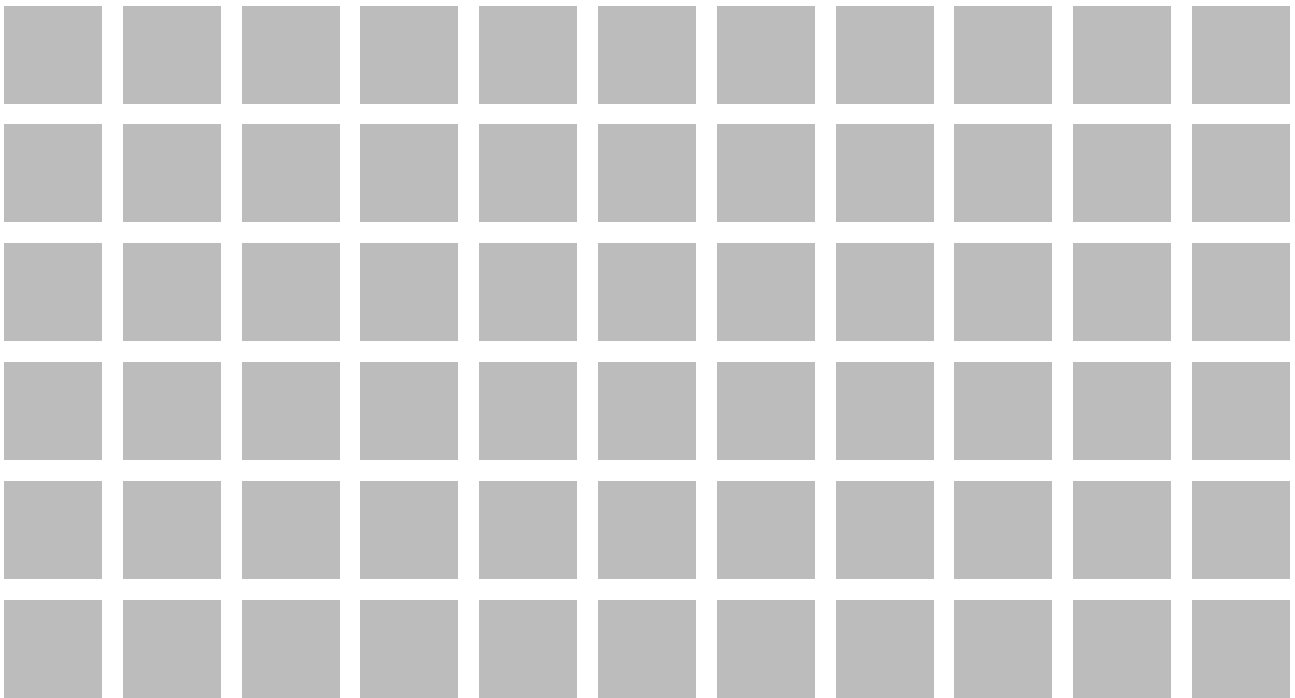
**Ferralux DIN AL4 orange**, is equipped  
Installation in an aluminum housing  
**VdS** similar version

**ALU**

For housing type:

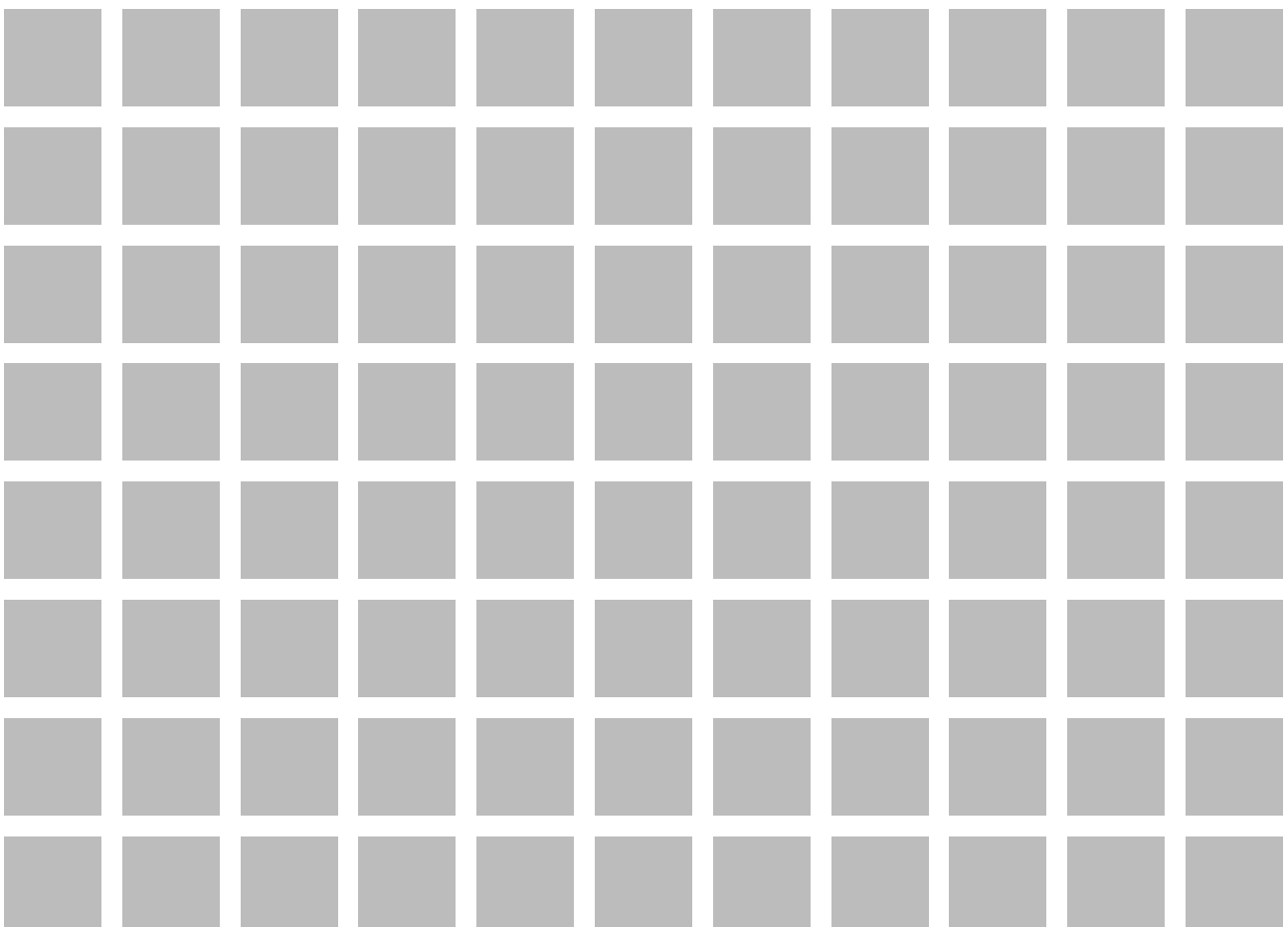
Aluminium

For this product series, a Type III Environmental Product Declaration (EPD) was issued according to ISO 14025 and EN 15804.  
The LCA results of the different product types are listed at the end of this product catalogue.  
The EPD documents can be viewed or downloaded from our homepage [www.aumueller-gmbh.de](http://www.aumueller-gmbh.de).

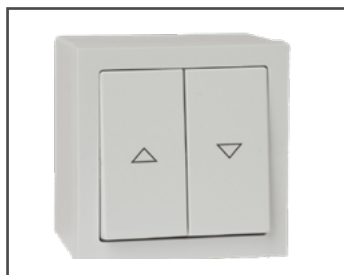


# 4

## Accessories for Control Units







### Ventilation button + Interface-Module for ventilation

- Ventilation button (24 V DC / 230 V AC)
- Ventilation key switch
- Rotary ventilation switch (230 V AC)
- Interface-Module - for ventilation

[To the product](#)



### Control elements

- Room temperature controller
- Hygrostat
- CO2 – Air quality sensor

[To the product](#)



### Weather sensors

- Wind sensor Type III
- Rain kompakt sensor Typ III (24 V DC / 230 V AC)
- WR-Set Type 7x/8x – wind and rain sensor set
- Wall bracket + Pole bracket for wind / rain sensor set
- WRG-Set – Wind direction sensor - set
- Mast bracket / Wall bracket for wind and rain sensor

[To the product](#)



### Peripheral devices

- Conservatory Control WG 3006
- REL1 – Relay for status forwarding
- WRAG2 – Wind evaluation unit / Rain evaluation unit
- REL-WRAG2 – Relay for contact multiplier
- Compact distributor housing for WRAG2

[To the product](#)



### Weather station / evaluation devices

- Wind and rain evaluation Type IV
- Wind and rain sensor set Type IV

[To the product](#)



### Smart Vent Box (SVB)

- SVB Flex
- SVB 0-10 V

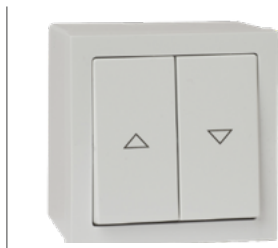
[To the product](#)

### ORDER DATA

Part.-No.

#### Ventilation button

**Application:** Ventilation button for connection to the ventilation inputs of SHEV or natural ventilation control units.



Picture: Surface mounting

#### TECHNICAL DATA (Rated values)

Contact type:	2 NO switches
Switching capacity:	230 V AC / 10 A
Housing:	plastic, white (similar to RAL 9016)
Dimensions (WxHxD):	Surface mounting: 81 x 81 x 54 mm Flush mounting: 81 x 81 x 11 mm
Connections:	Plug-in terminal 1,5 mm <sup>2</sup> (rigid wire)
Protection rating:	IP20
Functions:	OPEN / CLOSE

#### Feature/Equipment

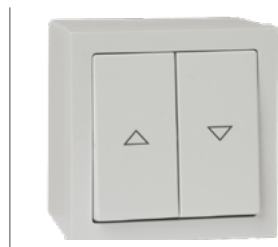
- Push buttons **without** mechanical locking, stop function when both buttons are pushed

#### VERSIONS

Surface mounting	<b>529030</b>			
Flush mounting (in box Ø60 mm)	<b>529230</b>			

#### Ventilation button 230 V AC

**Application:** Ventilation button for connection to the push button input of 230 V AC power supplies or for direct control of 230 V AC drives.



Picture: Surface mounting

#### TECHNICAL DATA (Rated values)

Contact type:	2 NO switches
Switching capacity:	max. 230 V AC (10 A)
Housing:	plastic, white (similar to RAL 9016)
Dimensions (WxHxD):	Surface mounting: 81 x 81 x 54 mm Flush mounting: 81 x 81 x 11 mm (of visible surfaces)
Connections:	Plug-in terminal 1,5 mm <sup>2</sup> (rigid wire)
Protection rating:	IP20
Functions:	OPEN/CLOSE dead-man (push to run mode)

#### Feature/Equipment

- Push buttons **with** mechanical locking, the drive move as long as a button is pushed

#### VERSIONS

Surface mounting	<b>529530</b>			
Flush mounting (in box Ø60 mm)	<b>529630</b>			

## ORDER DATA

Part.-No.

## Ventilation key switch

**Application:** Ventilation button for connection to the ventilation inputs of SHEV or natural ventilation control units.

Picture: Surface mounting

**TECHNICAL DATA (Rated values)**

Contact type:	2 NO switches
Switching capacity:	230 V AC / 10 A
Housing:	plastic, white (similar to RAL 9016)
Dimensions (WxHxD):	Surface mounting: 81 x 81 x 54 mm Flush mounting: 81 x 81 x 11 mm
Connections:	Plug-in terminal 1,5 mm <sup>2</sup> (rigid wire)
Protection rating:	IP20
Functions:	OPEN-STOP-CLOSE

**Feature/Equipment**

- Switch with semicylinder (DIN 19525) and 3 keys

**VERSIONS**

Surface mounting	529350		
Flush mounting (in box Ø60 mm)	529450		

## Rotary ventilation switch 230 V AC

**Application:** Rotary switch for connection to the push button input of 230 V AC power supplies or for direct control of 230 V AC drives.

Picture: Surface mounting

**TECHNICAL DATA (Rated values)**

Contact type:	2 NO switches
Switching capacity:	230 V AC / 10 A
Housing:	plastic, white (similar to RAL 9016)
Dimensions (WxHxD):	Surface mounting: 81 x 81 x 54 mm Flush mounting: 81 x 81 x 11 mm (of visible surfaces)
Connections:	Plug-in terminal 1,5 mm <sup>2</sup> (rigid wire)
Protection rating:	IP20
Functions:	OPEN-STOP-CLOSE

**Feature/Equipment**

- Switch with mechanical locking,

**VERSIONS**

Surface mounting	529550		
Flush mounting (in box Ø60 mm)	529650		

## FAS Interface-Module - for ventilation

533601

**Application:** When connecting the room sensor, hygrostat or timer to the **EMB 7X00** for signal conversion from permanent contact to short-time pulse**TECHNICAL DATA (Rated values)**

Operating voltage:	24 V DC
Housing:	plastic, for 35-mm mounting rail
Dimensions (WxHxD):	27 x 50 x 96 mm

**Feature/Equipment**

- Module for **EMB 8000+** not required.

**OPTIONS**

Cabinet mounting (a larger housing may be required)	500113		
---	--------	--	--

### ORDER DATA

	Part.-No.			
<b>Room temperature controller</b>	<b>483200</b>			
<b>Application:</b> Thermostat as on-off controller for room temperature detection.				



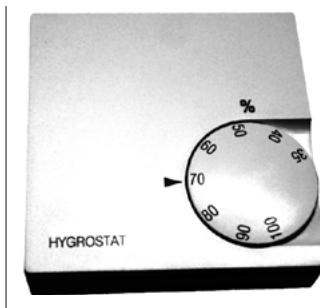
#### TECHNICAL DATA (Rated values)

Measuring element:	Bimetal switch
Contact type:	1 change-over switch
Switching capacity:	230 V AC / 5 A
Settings:	0 – 30 °C
Housing:	Surface mounting, plastic, white
Dimensions (WxHxD):	74,5 x 74,5 x 25 mm
Connections:	Screw terminal 1,5 mm <sup>2</sup> (rigid wire)
Protection rating:	IP30

#### Feature/Equipment

- Connection to **ventilation inputs** of SHEV or natural ventilation control units

<b>Hygrostat</b>	<b>483050</b>			
<b>Application:</b> Hygrostat as on-off controller for room humidity detection.				



#### TECHNICAL DATA (Rated values)

Measuring element:	Bimetal switch
Contact type:	1 Change-over switch
Switching capacity:	230 V AC / 5 A
Settings:	35 – 100% humidity
Housing:	Surface mounting, plastic, white
Dimensions (WxHxD):	74,5 x 74,5 x 25 mm
Connections:	Screw terminal 1,5 mm <sup>2</sup> (rigid wire)
Protection rating:	IP30

#### Feature/Equipment

- Connection to **ventilation input** of SHEV or natural ventilation control units

<b>CO<sub>2</sub> – Air quality sensor</b>	<b>483710</b>			
<b>Application:</b> Sensor for the detection and evaluation of the CO <sub>2</sub> concentration inside rooms.				



#### TECHNICAL DATA (Rated values)

Operating voltage:	24 V DC (+/-5%)
Measuring element:	electronic
Contact type:	2 Normal open switch
Pulse duration:	3,5 sec.
Switching capacity:	230 V AC / 0,5 A
Measuring range:	0 – 3000 ppm CO <sub>2</sub>
Housing:	Surface mounting, plastic, white
Dimensions (WxHxD):	78 x 78 x 35 mm
Connections:	Screw terminal 1,5 mm <sup>2</sup> (rigid wire)
Protection rating:	IP30
Display:	3 LED (green, yellow, red)

#### Feature/Equipment

- Connection to **ventilation input** of SHEV or natural ventilation control units

**ORDER DATA**

		Part.-No.	
<b>Wind sensor Type III</b>	<b>482021</b>		
<b>Application:</b> Anemometer with 3 impact resistant wind cups (PA6) for wind speed detection.			



**TECHNICAL DATA (Rated values)**

Operating voltage:	24 V DC (+/- 20%)
Measuring principle:	Pulse generator, ball beared
Housing:	Aluminium Ø36 mm, untreated
Wind cups:	PA6, black
Dimensions:	250 x 250 x 80 mm
Connection cable:	non-halogen cable, approx. 4 m

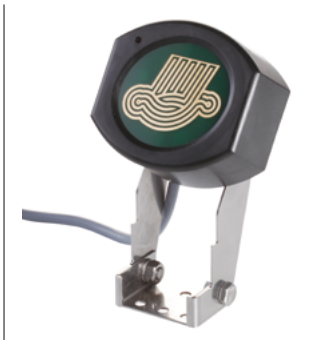
**Feature/Equipment**

- For connection with: EMB7300 control units, WM Weather-Module (EMB8000), wind/rain controls WRAG2 and Type IV. With clamp ring for fixing on all the wall/pole brackets with outer diameter Ø36mm

**COMPONENTS**

Cups for wind sensor Type III	<b>490601</b>		
Clamp ring for wind sensor Type III	<b>515950</b>		

<b>Rain sensor Typ III 24 V DC</b>	<b>480210</b>		
<b>Application:</b> Rain sensor with heated sensor surface and internal control with volt free output contact.			



**TECHNICAL DATA (Rated values)**

Operating voltage:	24 V DC (+/- 20%)
Standby current:	<150 mA
Measuring principle:	Conductivity measurement, heated sensor
Hysteresis:	5 min
Display:	Output active
Output:	Change-over switch, 5 A / max. 48 V
Protection rating:	IP65
Housing:	Surface mounting, ABS black with bracket (stainless steel)
Dimensions:	100 x 85 x 172 mm
Connection cable:	non-halogen cable, approx. 4 m

**Feature/Equipment**

- For connection with: EMB7300 control units, WM Weather-Module (EMB8000), wind / rain controls WRAG2 and Type IV

<b>Rain sensor Typ III 230 V AC</b>	<b>480110</b>		
<b>Application:</b> Rain sensor with heated sensor surface and internal control with volt free output contact.			



**TECHNICAL DATA (Rated values)**

Operating voltage:	230 V AC (50 Hz)
Power consumption:	<1,5 VA
Measuring principle:	Conductivity measurement
Display:	Output active
Output:	Change-over switch, 5 A / max. 230 AC
Protection rating:	IP65
Housing:	Surface mounting, ABS black with bracket (stainless steel)
Dimensions:	100 x 85 x 172 mm
Connection cable:	non-halogen cable, approx. 4 m

**Feature/Equipment**

- Single device for the feed from electric mains power supply

### ORDER DATA

		Part.-No.	
<b>WR-Set Type 7x/8x – Wind and Rain Sensor Set</b>		<b>482100</b>	
<b>Application:</b> Sensors for wind and rain to work with an evaluation unit WRAG2 or Typ IV, a WM Weather-Module or directly with a SHEV control unit, for closing and blocking the natural ventilation under bad weather conditions.			



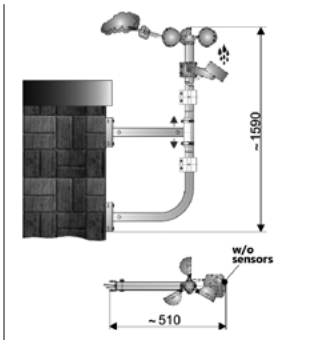
#### TECHNICAL DATA (Rated values)

Rated voltage:	24 V DC (+/- 20%)
Rain sensor Type III	heated sensor surface, switch-off delay approx. 5 min.
Contact:	1 Change-over switch, max. 48 V / 5 A
Current consumption:	<150 mA
Housing:	Surface mounting, ABS black with stainless steel bracket
Dimensions (WxHxD):	100 x 85 x 172 mm
Connection cable:	Non-halogen cable, approx. 4 m
Volt free contac:	1 Change-over switch, max. 48 V / 5 A
Wind sensor Type III	Anemometer with 3 impact resistant wind cups (PA6)
Measuring principle:	Pulse generator
Dimensions:	250 x 250 x 80 mm
Connection cable:	non-halogen cable, approx. 4 m

#### Feature/Equipment

- Set including: Wind sensor Type III (Part.-No. 482021), rain sensor Type III (Part.-No. 480210), clamp ring (Part.-No. 515950), aluminium bracket for pole or wall mounting (Part.-No. 482093), without mounting screws

<b>Wall bracket for wind and rain sensor</b>		<b>491200</b>	
<b>Application:</b> Wall bracket with dual fixings for wind and rain sensors.			



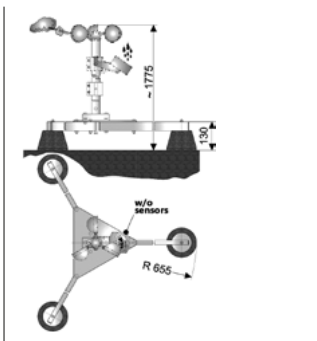
#### TECHNICAL DATA

Height:	app. 1590 mm
Outreach:	app. 510 mm
Material:	Aluminium Ø36mm

#### Feature/Equipment

- w/o fixing screws and sensors

<b>Pole bracket for wind and rain sensors</b>		<b>491101</b>	
<b>Application:</b> Pole bracket for the fixing of wind and rain sensors at flat roofs.			



#### TECHNICAL DATA

Height:	app. 1775 mm
Base area:	app. Ø1310 mm
Material:	Aluminium Ø36mm with 3 stable concrete feet

#### Feature/Equipment

- w/o sensors

## ORDER DATA

Part.-No.

**WRG-Set – Wind direction sensor****482120**

**Application:** Sensor for wind direction detecting to work **with an evaluation unit or a WM Weather-Module** for the wind direction depending OPENING / CLOSING of windows in case of fire.

**TECHNICAL DATA (Rated values)**

Operating voltage:	24 V DC (+/- 20%)
<b>Wind direction sensor</b>	ball beared measuring element with wind vane
Measuring range:	8 wind directions
Material:	Revolving head: PA6 black, wind vane: stainless steel
Connection cable:	Non-halogen 6 x 0,34 mm <sup>2</sup> , length ca. 3 m
<b>Junction box</b>	with circuit board and screw terminals
Connections:	WRG, wind sensor Type III, rain sensor TYP III
Housing (WxHxD):	110 x 110 x 66 mm, IP54
Connections:	Screw terminals 1,5 mm <sup>2</sup> (rigid wire),

**Feature/Equipment**

- Set including: Wind direction sensor (Part.-No. 482120), Junction box (Part.-No. 482110), clamp ring (Part.-No. 515950), aluminium bracket for pole or wall mounting (Part.-No. 482093), without mounting screws

**Mast bracket / wall bracket for wind and rain sensor****482093**

**Application:** Console for mast mounting or wall mounting made of aluminum (untreated), without fastening screws.

**TECHNICAL DATA (Rated values)**

<b>Pipe elbow</b>	
Material:	Aluminium (E6/C-0)
Dimensions:	Ø36 X 2 mm
Length:	488,5 mm
<b>Connection piece</b>	
Material:	AISI12
Dimensions (H x D x W):	120 x 80 x 45 mm

**Feature/Equipment**

- Console consisting of pipe elbow and connection piece, with connecting elements M8

### ORDER DATA

		Part.-No.		
<b>Conservatory Control WG 3006</b>		<b>484001</b>		
<b>Application:</b>	Control of 230 V drives. For opening and closing of conservatories, terraces and balconies canopies - manually and depends on the internal temperature. It may be a 230 V rain sensor can be connected.			



#### TECHNICAL DATA (Rated values)

Operating voltage:	230 V AC
Contact type:	1 change-over switch
Switching capacity:	230 V AC / 3 A
Settings:	5 – 30 °C
Housing:	Surface mounting, plastic, white
Dimensions (WxHxD):	127 x 74 x 24 mm
Connections:	Screw terminal 1,5 mm <sup>2</sup> (rigid wire)
Protection rating:	IP30

#### Feature/Equipment

- Thermostat with switch hand/automatic and rocker-switch OPEN/CLOSE

<b>REL1 – Relay for status forwarding</b>		<b>659950</b>		
<b>Application:</b>	For the transmission of various functions or status of a SHEV or natural ventilation control unit to external devices.			



#### TECHNICAL DATA (Rated values)

Operating voltage:	24 V DC
Contact type:	3 Change-over switch
Switching capacity:	230 V / 10 A
Connections:	Screw terminal 1,5 mm <sup>2</sup> (rigid wire)

#### Feature/Equipment

- With base for installation at 35-mm mounting rail and suppressor diode

### OPTIONS

Cabinet mounting (a larger housing may be required)	<b>500113</b>		
---	---------------	--	--

<b>WRAG2 – Wind / Rain evaluation unit</b>		<b>482005</b>		
<b>Application:</b>	For the evaluation of wind and rain signals from wind and rain sensors Type 7x/8x or rain sensors operating with 24 V DC and their transmission via 2 volt free contacts, with additional input for connecting of ventilation buttons (or time switches etc.).			



#### TECHNICAL DATA (Rated values)

Operating voltage:	230 V AC, 50 Hz
Standby consumption:	<100 mA
Inputs:	Rain sensor 24 V DC, wind sensor, ventilation button
Display:	Power, wind, rain
Wind speed range:	2,5 – 20 m/s, adjustable
Outputs:	2 Change-over switches, 230 V AC / 5 A
Housing:	plastic, surface RAL 7035, bottom RAL 7021
Dimensions (WxHxD):	105 x 86 x 58 mm
Installation:	35-mm mounting rail
Connections:	Screw terminals 1,5 mm <sup>2</sup> (rigid wire)
Protection rating:	IP40

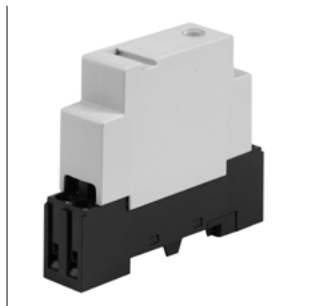
#### Feature/Equipment

- Signal transmission for wind or/and rain (separately or together) adjustable via 4 DIP switches, direct connection of drives up to max. 5 A, switch-on time delay for wind and rain signal, and switch-off time delay for wind signal



## ORDER DATA

Part.-No.

**REL-WRAG2 – Relay for contact multiplier****487020****Application:** Relay as contact multiplier of output signals of wind and rain evaluation unit WRAG2.**TECHNICAL DATA (Rated values)**

Operating voltage:	230 V AC, 50 Hz
Contact type:	2 Change-over switches
Switching capacity:	230 V / 8 A
Connections:	Screw terminal 1,5 mm <sup>2</sup> (rigid wire)

**Feature/Equipment**

- With base for installation on 35-mm mounting rail

**Compact distributor housing for WRAG2****482011****Application:** Surface mounting distributor housing for the installation and wiring of wind and rain evaluation WRAG2 and max. 2 relays.**TECHNICAL DATA**

Material:	plastic (ABS)
Type of installation:	Surface mounting
Protection rating:	IP30
Dimensions (WxHxD):	182 x 180 x 82 mm
Reserve space:	2 REL-WRAG2

**Feature/Equipment**

- without fixing screws
- without cover strips

**Distributor housing for WRAG2****482015****Application:** Surface mounting distributor housing for the installation and wiring of wind and rain evaluation WRAG2 and max. 6 relays.**TECHNICAL DATA**

Material:	plastic (ABS)
Type of installation:	Surface mounting
Protection rating:	IP30
Dimensions (WxHxD):	303 x 245 x 95 mm
Reserve space:	6 REL-WRAG2

**Feature/Equipment**

- without fixing screws
- without cover strips

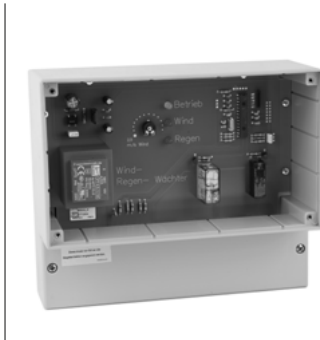
### ORDER DATA

Part.-No.

#### Wind and rain evaluation Type IV

**482008**

**Application:** For the evaluation of wind and rain signals from wind and rain sensors Type 7x/8x or rain sensors operating with 24 V DC and their transmission via 3 volt free contacts.



#### TECHNICAL DATA (Rated values)

Operating voltage:	230 V AC, 50 Hz
Standby current:	<100 mA
Inputs:	Rain sensor 24 V DC, wind sensor
Display:	Power, wind, rain
Wind speed range:	2,5 – 10 m/s, adjustable
Outputs:	3 Change-over switches, 5 A / 230 V AC
Housing:	plastic, surface RAL 7035, bottom RAL 7021
Dimensions (WxHxD):	212 x 180 x 80 mm
Installation:	Surface mounting
Connections:	Screw terminal 1,5 mm <sup>2</sup> (rigid wire)
Protection rating:	IP40

#### Feature/Equipment

- Direct connection of drives up to max. 5 A, switch-on time delay for wind and rain signal, and switch-off time delay for wind signal
- Suitable for surface mounting

#### Wind and rain sensor set Type IV

**481990**

**Application:** Set consisting of wind and rain evaluation Type IV with wind and rain sensor set Type 7x/8x, for the evaluation of wind and rain signals and their transmission via 3 volt-free contacts.



#### TECHNICAL DATA

See wind and rain control unit Type IV and wind and rain sensor set Type 7x/8x.

#### Feature/Equipment

- Set including: Wind and rain evaluation (Part.-No. 482008), Wind sensor Type III (Part.-No. 482021), rain sensor Type III (Part.-No. 480210), clamp ring (Part.-No. 519950), bracket for pole or wall mounting (Part.-No. 482093), without mounting screws

## ORDER DATA

Part.-No.

SVB Flex - Smart Vent Box Flex

660110

**Application:** for digital control of the running direction „OPEN“ or „CLOSE“ at **AUMÜLLER** drives 24 V DC - S12

**TECHNICAL DATA (Rated values)**

Rated voltage:	24 V DC (19 - 28 V DC)
Connection:	1x drive group 1x input for external superordinate signals 1x ventilation button connection
Ambient temperature range:	-5°C to +40°C
Dimensions (WxHxD):	40,5 x 48,5 x 28,3 mm
Connection terminals:	9x spring terminals, max. 1,5 mm <sup>2</sup>
Protection rating:	IP20

**Feature/Equipment**

- With 9x spring terminals for connection at **AUMÜLLER** drives 24 V DC - S12

SVB 0-10 V - Smart Vent Box 0-10 V

660120

**Application:** for analog control of the running direction „OPEN“ or „CLOSE“ at **AUMÜLLER** drives 24 V DC - S12

**TECHNICAL DATA (Rated values)**

Rated voltage:	24 V DC (19 - 28 V DC)
Connection:	1x drive group 1x input for external superordinate signals 1x 0 - 10 V input 1x report output
Ambient temperature range:	-5°C to +40°C
Dimensions (WxHxD):	40,5 x 48,5 x 28,3 mm
Connection terminals:	9x spring terminals, max. 1,5 mm <sup>2</sup>
Protection rating:	IP20

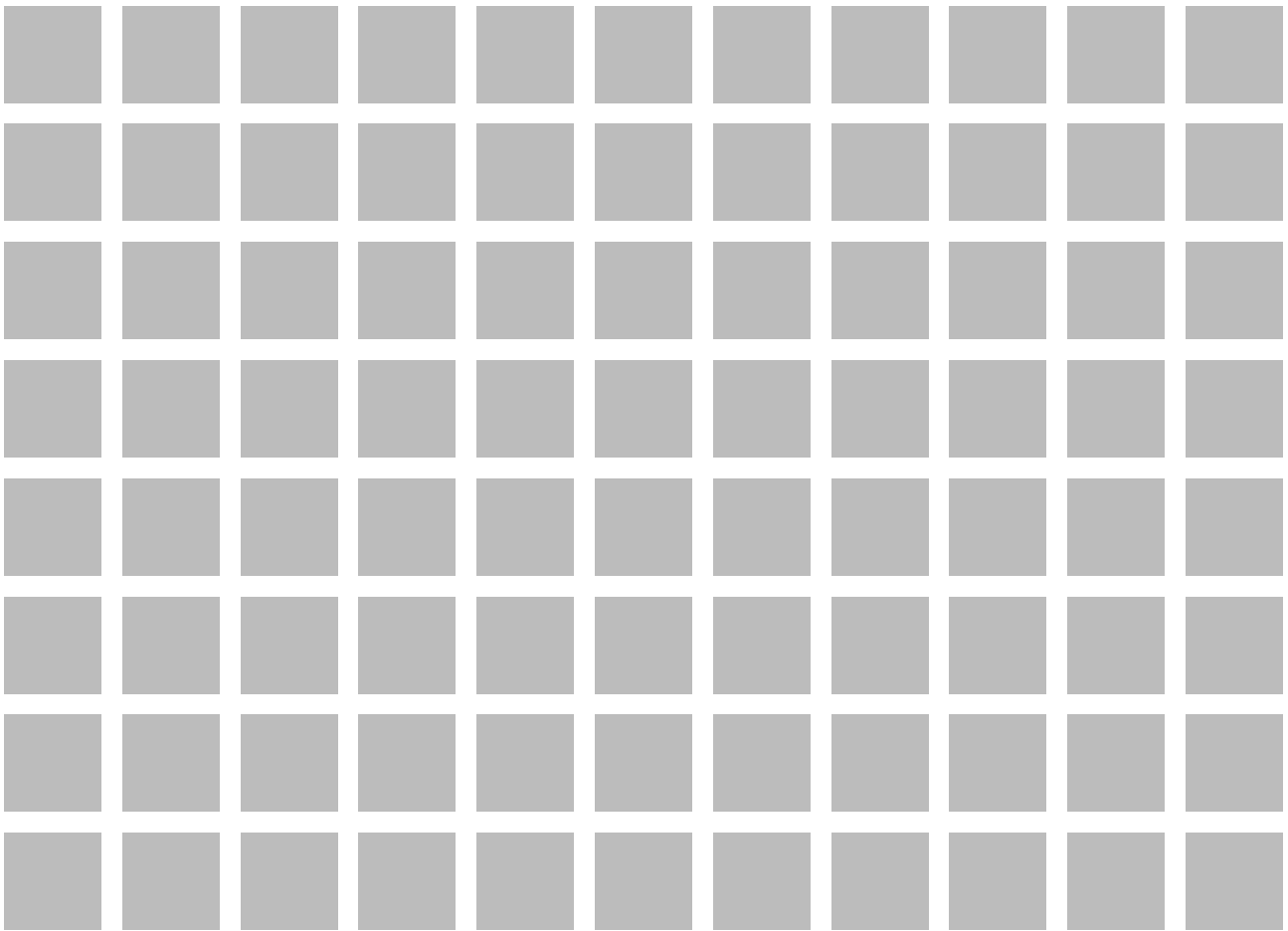
**Feature/Equipment**

- With 9x spring terminals for connection at **AUMÜLLER** drives 24 V DC - S12

For this product series, a Type III Environmental Product Declaration (EPD) was issued according to ISO 14025 and EN 15804.

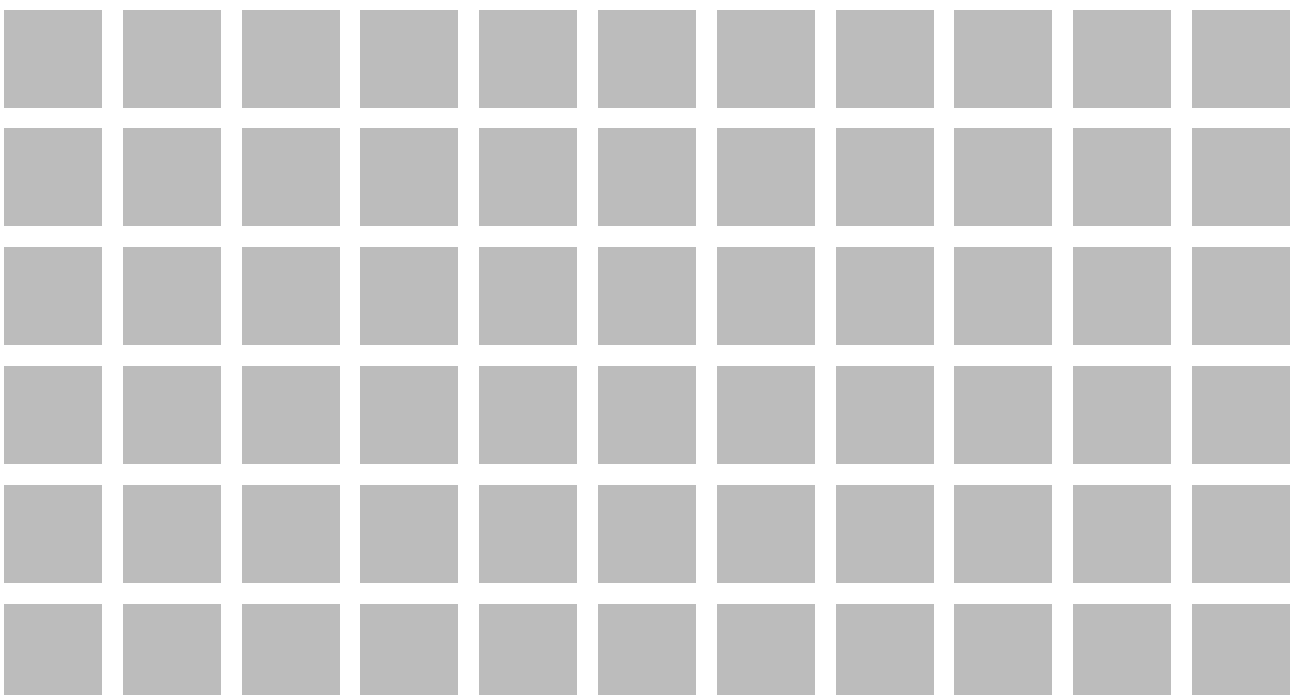
The LCA results of the different product types are listed at the end of this product catalogue.

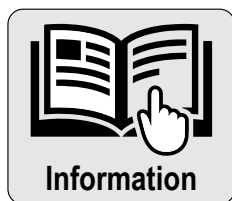
The EPD documents can be viewed or downloaded from our homepage [www.aumueeller-gmbh.de](http://www.aumueeller-gmbh.de).



# 5

## Natural Ventilation Control Units





**General information about this product**

- Product features Lüftungszentralen und Netzteile
- Simplified diagramm LZ6

To the information



**Natural ventilation control unit**

- LZ1 2,5 A – Natural ventilation control unit 24 V DC
- LZ6 – Natural ventilation control unit 24 V DC

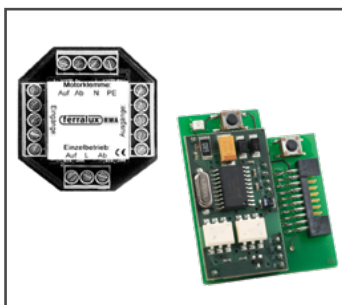
To the product



**Power supply - 230 V AC / 24 V DC**

- NT-T-2,5 – Power supply 230 V AC / 24 V DC, 2,5 A
- NT-S-6,5 – Power supply 230 V AC / 24 V DC, 6,5 A

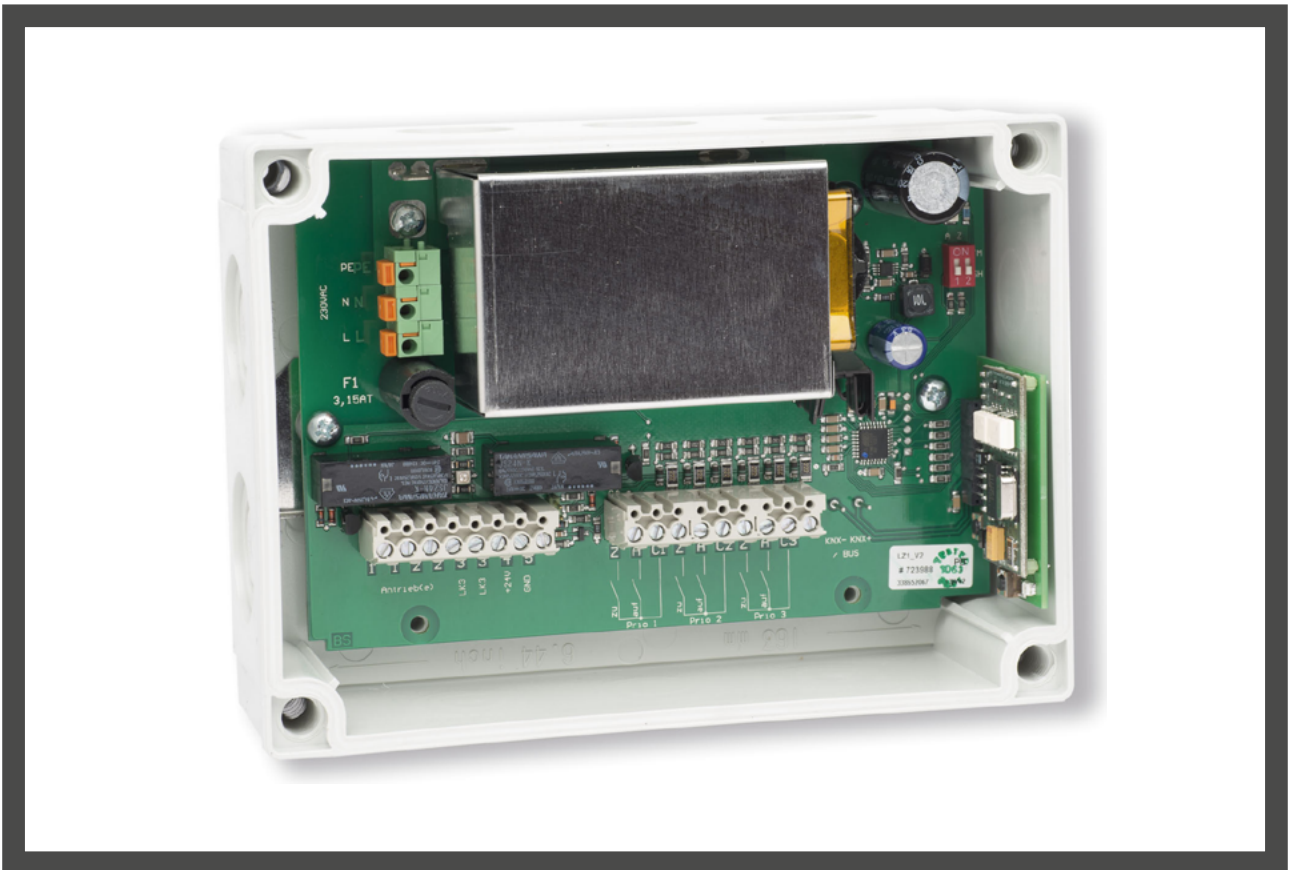
To the product



**Control Relay - 230 V AC + accesories**

- Universal Control Relay for one 230 V AC drive
- Relay Interface for two 230 V AC drives
- BI-K - KNX Interface LZ1 / LZ6 / EMB7300

To the product



## FEATURES OF NATURAL VENTILATION – CONTROL UNITS AND POWER SUPPLIES

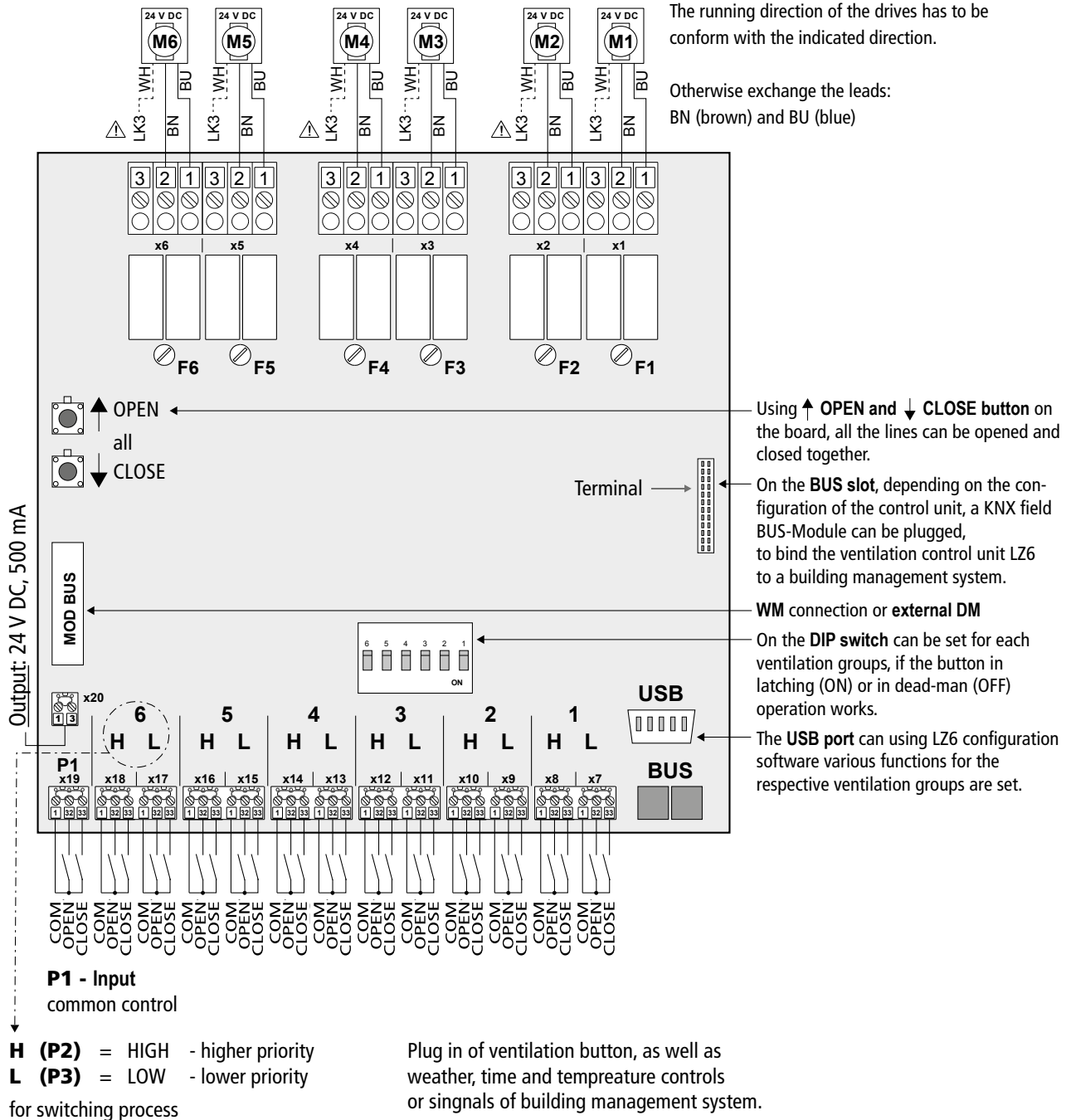
- Control units with accessories like weather sensors and control panels for the control of drives
- 24 V DC for natural ventilation purpose within rooms or buildings
- Low residual ripple output voltage (<2 Vpp)
- Inputs of two or more control units may be switched in parallel
- Connection of various control units in one ventilation group
- Ventilation button inputs with OPEN-STOP-CLOSE function and 2 or 3 priorities
- Vent. push button inputs configurable in dead-man or jog-switch mode
- All drive line outputs are fused
- Input for higher-ranked e.g. volt free wind and rain signals
- Suitable for the use in controlled natural ventilation systems
- Various display and control elements
- Flat surface mounted housings, suitable for the installation in false floor or suspended ceilings
- Optional BUS interface for integration into GLT systems via KNX
- Digital interface for **AUMÜLLER S12** drives

For this product series, a Type III Environmental Product Declaration (EPD) was issued according to ISO 14025 and EN 15804.

The LCA results of the different product types are listed at the end of this product catalogue.

The EPD documents can be viewed or downloaded from our homepage [www.aumueller-gmbh.de](http://www.aumueller-gmbh.de).

**SIMPLIFIED DIAGRAMM – LZ6**



### ORDER DATA

Part.-No.

#### LZ1 2,5 A – Natural ventilation control unit 24 V DC

**Application:** Natural ventilation control panel with power supply for the controlling of 24 V DC drives in one ventilation group.



#### TECHNICAL DATA (Rated values)

Operating voltage:	230 V AC (195 – 253 V AC, 50/60 Hz)
Power consumption:	60 W
Output voltage:	24 V DC (20 – 28 V DC / 2 Vpp)
Output current:	<b>2,5 A</b>
Inputs:	1x Ventilation button line with 3 priorities
Outputs:	1x Drive line 24 V DC / 500 mA (e.g. rain sensor)
Display:	Power, output voltage switched in OPEN/CLOSE direction
Slot:	BUS-Module (KNX)
Connections:	S12 drives (for communication with BUS-Modules)
Housing:	Surface mounting, plastic (ABS)
Dimensions (WxHxD):	<b>180 x 130 x 60 mm</b>
Connection terminals:	Screw terminals 2,5 mm <sup>2</sup> (rigid wire)
Protection rating:	IP54

#### Feature/Equipment

- DIP switch for the configuration of the inputs with low priority in jog-switch or dead-man mode
- Inputs of various LZ1 and/or LZ6 are switchable in parallel
- With the BUS-Module it is possible to control drives with internal intelligent cut-off switch S12 for controlled natural ventilation via the bus protocol

#### VERSIONS

LZ1 2,5 A	<b>without</b> BI-K - KNX-Interface-Module	<b>660027</b>		
LZ1 2,5 A	<b>including</b> BI-K - KNX-Interface-Module (Part.-No.: 683999)	<b>660028</b>		

#### LZ6 – Natural ventilation control unit 24 V DC

**Application:** Natural ventilation control panel with power supply for the controlling of 24 V DC drives in 6 ventilation groups.



#### TECHNICAL DATA (Rated values)

Operating voltage:	230 V AC (195 – 253 V AC, 50/60 Hz)
Max. power consumption:	506 W / 805 W / 1518 W
Output voltage:	24 V DC (20 – 28 V DC / 0,5 Vpp)
Output current:	<b>10 A / 24 A / 30 A</b>
Inputs:	6x Ventilation button lines with 2 priorities (P3: LOW; P2: HIGH)
Outputs:	1x Input all outputs OPEN/CLOSE (P1) 6x Drive output lines 24 V DC / 500 mA (e.g. rain sensor)
Display:	Power, output voltage switched in OPEN/CLOSE direction
Slot:	for optional BUS-Module (KNX)
Housing:	Surface mounting, steel sheet, RAL 7035 (light grey)
Dimensions (WxHxD):	<b>420 x 300 x 144 mm</b>
Connection terminals:	Screw terminals 2,5 mm <sup>2</sup> (rigid wire)
Protection rating:	IP30

#### Feature/Equipment

- DIP switch for the configuration of the inputs with low priority in jog-switch or dead-man mode
- Inputs of various LZ1 and/or LZ6 are switchable in parallel
- All outputs are fused

#### VERSIONS

LZ6 10 A	Output current: 6 x 1,6 A	<b>660070</b>		
LZ6 24 A	Output current: 6 x 4,0 A	<b>660071</b>		
LZ6 30 A	Output current: 6 x 5,0 A	<b>660072</b>		



## ORDER DATA

	Part.-No.		
<b>NT-T-2,5 – Power supply 230 V AC / 24 V DC, 2,5 A</b>	<b>660009</b>		
<b>Application:</b> Power supply with transformer for the controlling of 24 V DC drives in one ventilation group.			

**TECHNICAL DATA (Rated values)**

Operating voltage:	230 V AC (+/-10%)
Power consumption:	60 W
Output voltage:	24 V DC (21 – 28 V DC)
Output current:	<b>2,5 A</b>
Duty cycle:	ED20% (10 min)
Ambient temperature range:	-5 °C ... +40 °C

Housing:	Surface mounting, plastic (ABS)
Dimensions (WxHxD):	94 x 180 x 81 mm
Connection terminals:	Screw terminals 2,5 mm <sup>2</sup> (230 V) / 4 mm <sup>2</sup> (24 V) (rigid wire)
Protection rating:	IP54

**Feature/Equipment**

- Control of OPEN/CLOSE with the 230 V AC power supply voltage

<b>NT-S-6,5 – Power supply 230 V AC / 24 V DC, 6,5 A</b>	<b>660007</b>		
<b>Application:</b> Switch mode power supply for the controlling of 24 V DC drives in one ventilation group.			

**TECHNICAL DATA (Rated values)**

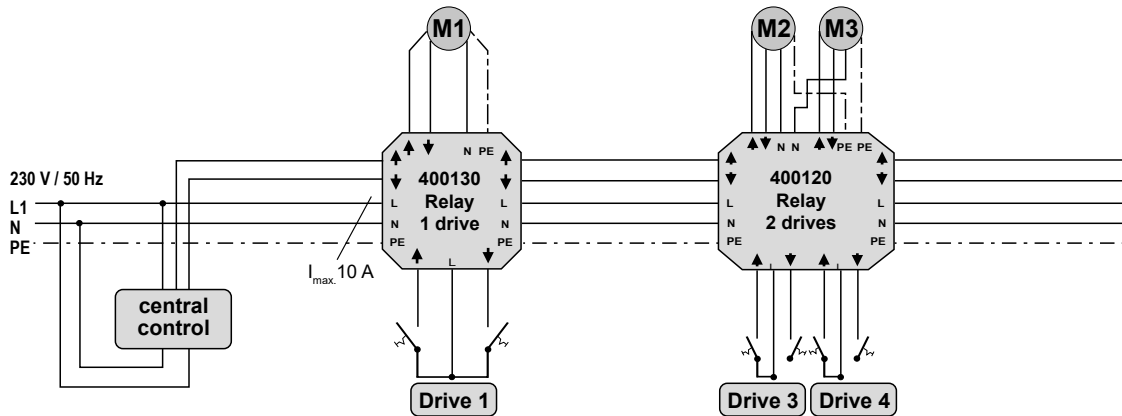
Operating voltage:	230 V AC (195 – 253 V AC, 50/60 Hz)
Power consumption:	460 W
Output voltage:	24 V DC (2 Vpp)
Output current:	<b>6,5 A</b>
Duty ratio:	ED30% (10 min)
Ambient temperature range:	-5 °C ... +40 °C

Housing:	Surface mounting, plastic (ABS)
Dimensions (WxHxD):	160 x 250 x 55 mm
Connection terminals:	Screw terminals 4 mm <sup>2</sup> (rigid wire)
Protection rating:	IP54

**Feature/Equipment**

- Control of OPEN/CLOSE with the 230 V AC power supply voltage
- Max. 8 power supplies may be switched in parallel

### SIMPLIFIED DIAGRAMM – CONTROL RELAY



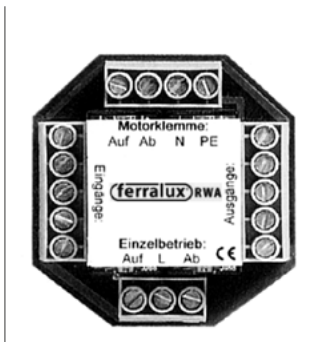
### ORDER DATA

Part.-No.

#### Universal Control Relay for 1 drive 230 V AC

400130

**Application:** Control Relay for the single or group-wise control of 1 drive 230 V AC, suitable for the installation in a flush-mounted junction box behind the ventilation button.



#### TECHNICAL DATA (Rated values)

Operating voltage:	230 V AC (+/-10%), 50 Hz
Output voltage:	230 V AC
Current consumption relay:	10 mA
Operating capacity:	<b>5 A</b>
Duty cycle:	ED30% (10 min)
Ambient temperature range:	0 °C ... +60 °C
Connections:	1 Ventilation button 230 V AC 1 Central OPEN/CLOSE (input / output) 1 Drive 230 V AC / 5 A
Operating mode:	Dead-man mode
Housing:	Plastic (ABS), for flush mounting junction box Ø60 mm
Dimensions (WxHxD):	46 x 52 x 30 mm
Connection terminals:	Screw terminal 1,5 mm <sup>2</sup> (rigid wire)
Protection rating:	IP20

#### Feature/Equipment

- Every Control Relay has an inputs and outputs for looping through of a higher priority command (i.e. from ventilation buttons or time switch) and the power supply
- The ventilation input controls the modul-own drive output only

#### Relay Interface for 2 drives 230 V AC

400120

**Application:** Relay Interface for the single or group-wise control of 2 drives 230 V AC, suitable for the installation in a flush-mounted junction box behind the ventilation button.



#### TECHNICAL DATA (Rated values)

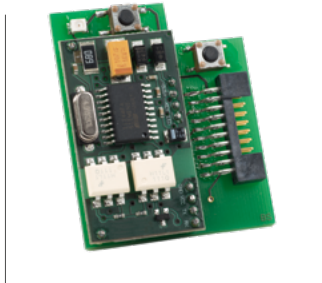
Operating voltage:	230 V AC (+/-10%), 50 Hz
Output voltage:	230 V AC
Current consumption relay:	10 mA
Operating capacity:	<b>5 A per output</b>
Duty cycle:	ED30% (10 min)
Ambient temperature range:	0 °C ... +60 °C
Connections:	2 Ventilation buttons 230 V AC 1 Central OPEN/CLOSE (input / output) 2 Drives 230 V AC / 5 A
Operating mode:	Dead-man mode
Housing:	Plastic (ABS), for flush mounting junction box Ø70 mm
Dimensions (WxHxD):	60 x 60 x 30 mm
Connection terminals:	Screw terminal 1,5 mm <sup>2</sup> (rigid wire)
Protection rating:	IP20

#### Feature/Equipment

- Every Relay Interface has an inputs and outputs for looping through of a higher priority command (i.e. from ventilation buttons or time switch) and the power supply
- Each ventilation input controls its own drive output only

**ORDER DATA**

				Part.-No.
<b>BI-K - KNX Interface LZ1 / LZ6 / EMB 7300</b>				
<b>Application:</b> Plug-in card for communication between the controllers <b>AUMÜLLER</b> LZ1, LZ6 and EMB 7300 to the KNX BUS system.				



**TECHNICAL DATA**

Rated voltage:	24 V DC
Ambient temperature range:	-5°C ... + 40°C
Relative humidity:	(no condensate) 5% ... 90%
Data points:	up to 16 pieces per drive line
BUS current:	9mA
Housing:	without (assembled PCB)
Dimensions (WxH):	51 x 42 mm
Connection terminals:	2 x 2 x 0,8 mm (KNX-BUS-Terminal)

**Feature/Equipment**

- Data of the control (e.g. drive position) are sent on the KNX-BUS.
- The controls received direct orders from the KNX-BUS (e.g. position information, weather data).
- The licensed version of the „EMB compact configurator“ required - for commissioning.

**VERSIONS**

Part.-No.				
<b>683999</b>	Delivery in parcel	for customer self-installation		
<b>683999-9</b>	Module factory fitted	factory fitted and fully wired		



	GWP (green-house potential)	Ozone depletion potential	Acidification potential	Eutrophication potential	Photo-chemical oxidation potential	Abiotic depletion - elements	Abiotic depletion - fossil	Primary energy not renewable	Primary energy renewable	Freshwater consumption
	(GWP 100)	(ODP)	(AP)	(EP)	(POCP)	(ADP <sub>el</sub> )	(ADP <sub>foss</sub> )	(PE <sub>n reg</sub> )	(PE <sub>reg</sub> )	(H <sub>2</sub> O)
	kg CO <sub>2</sub> -equivalent	kg R11-equivalent	kg SO <sub>2</sub> -equivalent	kg PO <sub>4</sub> <sup>3-</sup>	kg C <sub>2</sub> H <sub>4</sub> -equivalent	kg Sb-equivalent	MJ	MJ	MJ	m <sup>3</sup>
<b>control units</b>										
7300 2A	4,31E+01	6,03E-06	3,85E+02	3,48E+01	2,46E+01	6,07E-02	4,65E+02	5,89E+02	1,36E+02	2,12E+01
7300 5A	4,31E+01	6,03E-06	3,85E+02	3,48E+01	2,46E+01	6,07E-02	4,65E+02	5,89E+02	1,36E+02	2,12E+01
7300 10A	1,72E+02	2,41E-05	1,54E+03	1,39E+02	9,84E+01	2,43E-01	1,86E+03	2,36E+03	5,44E+02	8,49E+01
7300 20A	3,45E+02	4,82E-05	3,08E+03	2,79E+02	1,97E+02	4,86E-01	3,72E+03	4,71E+03	1,09E+03	1,70E+02
8000+ 5A	8,62E+01	1,21E-05	7,71E+02	6,97E+01	4,92E+01	1,21E-01	9,30E+02	1,18E+03	2,72E+02	4,25E+01
8000+ 10A	1,72E+02	2,41E-05	1,54E+03	1,39E+02	9,84E+01	2,43E-01	1,86E+03	2,36E+03	5,44E+02	8,49E+01
8000+ 24A	4,14E+02	5,79E-05	3,70E+03	3,35E+02	2,36E+02	5,83E-01	4,47E+03	5,66E+03	1,30E+03	2,04E+02
8000+ 48A	8,27E+02	1,16E-04	7,40E+03	6,69E+02	4,72E+02	1,17E+00	8,93E+03	1,13E+04	2,61E+03	4,08E+02
8000+ 72A	1,24E+03	1,74E-04	1,11E+04	1,00E+03	7,09E+02	1,75E+00	1,34E+04	1,70E+04	3,91E+03	6,11E+02
LZ1	4,31E+01	6,03E-06	3,85E+02	3,48E+01	2,46E+01	6,07E-02	4,65E+02	5,89E+02	1,36E+02	2,12E+01
LZ6 24	4,14E+02	5,79E-05	3,70E+03	3,35E+02	2,36E+02	5,83E-01	4,47E+03	5,66E+03	1,30E+03	2,04E+02
LZ6 30	5,17E+02	7,23E-05	4,62E+03	4,18E+02	2,95E+02	7,28E-01	5,58E+03	7,07E+03	1,63E+03	2,55E+02
<b>controllers</b>										
NT-T2,5	4,31E+01	6,03E-06	3,85E+02	3,48E+01	2,46E+01	6,07E-02	4,65E+02	5,89E+02	1,36E+02	2,12E+01
NT-S 6,5	1,12E+02	1,57E-05	1,00E+03	9,06E+01	6,40E+01	1,58E-01	1,21E+03	1,53E+03	3,53E+02	5,52E+01
HSE	7,18E-02	1,00E-08	6,42E-01	5,81E-02	4,10E-02	1,01E-04	7,75E-01	9,82E-01	2,27E-01	3,54E-02
WR-Set7x/8x	1,44E-01	2,01E-08	1,28E+00	1,16E-01	8,20E-02	2,02E-04	1,55E+00	1,96E+00	4,53E-01	7,08E-02
RS TIII 24	1,08E-01	1,51E-08	9,63E-01	8,71E-02	6,15E-02	1,52E-04	1,16E+00	1,47E+00	3,40E-01	5,31E-02
RS TIII 230	1,08E+00	1,51E-07	9,63E+00	8,71E-01	6,15E-01	1,52E-03	1,16E+01	1,47E+01	3,40E+00	5,31E-01
WRAG2	3,59E-01	5,02E-08	3,21E+00	2,90E-01	2,05E-01	5,06E-04	3,88E+00	4,91E+00	1,13E+00	1,77E-01
WRA TypIV	7,18E-01	1,00E-07	6,42E+00	5,81E-01	4,10E-01	1,01E-03	7,75E+00	9,82E+00	2,27E+00	3,54E-01
WR-ST IV	1,44E+00	2,01E-07	1,28E+01	1,16E+00	8,20E-01	2,02E-03	1,55E+01	1,96E+01	4,53E+00	7,08E-01

Declaration code: **M-EPD-SVR-GB-101**  
 Programme operator: **ift Rosenheim GmbH**  
 Theodor-Gietl-Str. 7-9,  
 83026 Rosenheim, Germany  
 LCA prepared by: **Life Cycle Engineering Experts**  
 Berliner Allee 58,  
 64295 Darmstadt, Germany  
 Declaration holder: **AUMÜLLER AUMATIC GmbH.**

The declaration is based on the PCR (Product Category Rules) document „Building Components for Smoke and Heat Control Systems“ No. PCR-RW-1.1:2013.

LCA calculations were based on the „cradle to grave“ life cycle including all upstream processes (e.g. raw material extraction, etc.).

The reference service life has been specified to 25 years. The calculation of the life cycle scenarios is based on a service life of **50 years** per electrical device.

The life cycle was modelled using the sustainability software tool „GaBi6“ for the development of Life Cycle Assessments. For the consideration of the impact categories the characterisation factors of the ELCD (European Reference Life Cycle Database) were used.

In accordance with the REACH candidate list, no substances of very high concern are contained.

AUMÜLLER AUMATIC GMBH    Tel. +49 8271 8185-0  
Gemeindewald 11            Fax +49 8271 8185-250  
86672 Thierhaupten        info@aumueller-gmbh.de

[www.aumueller-gmbh.de](http://www.aumueller-gmbh.de)