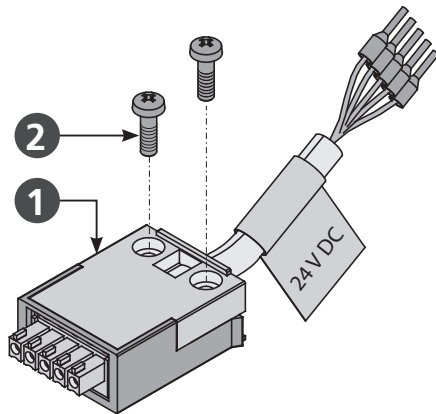


## INSTRUCTION FOR INSTALLATION AND COMMISSIONING

### Wire Click - 24V DC

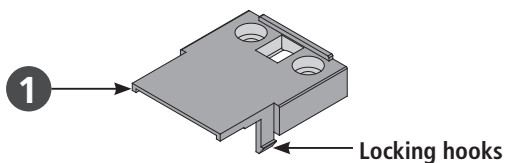
**Wire Click** enable the use of site-supplied cable. It simplifies assembly and the electrical connection of the drives.

- Loosen the screws ② and remove the housing cover ①.

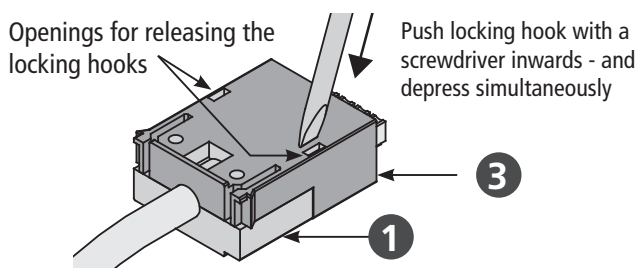


#### NOTE

Locking hooks - at the housing cover ① - prevent withdrawal of the plug under tensile load.



- On the underside of the plug housing ③ are two openings for releasing the locking hooks. Push locking hook with a screwdriver inwards - and depress simultaneously.



- Replace cable set - provided by the customer in place of connecting cable.
- Moung the housing cover ① with the both screws ②.

#### Connection assignment

**Application:** Unitary plug-solution for **AUMÜLLER** Click system.

**Order number:**  
 501251 - 3 m cable length - 24 V DC  
 501252 - 5 m cable length - 24 V DC  
 501253 - 10 m cable length - 24 V DC

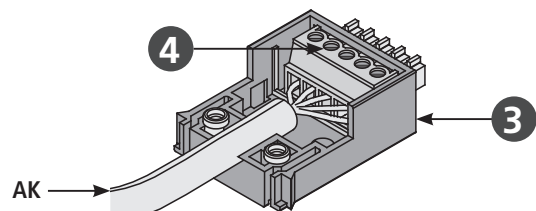
**Rated voltage:** 24 V DC (19 V ... 28 V)  
**Connecting cable:** non-halogen, grey 5 x 0,5 mm<sup>2</sup>  
**Terminal:** to 1,5 mm<sup>2</sup>

Function	Colour	DIN IEC 757
OPEN / CLOSE	blue	BU
OPEN / CLOSE	brown	BN
Data	white	WH
Rel: NO	violet	VT
Rel: NO	green	GN

Terminals ④ to 1,5 mm<sup>2</sup>.

#### NOTE

The performances (especially the fire behavior) of locally provided cables, must be checked on own responsibility on compliance with the application-specific local regulations!



Warranty claims require proper and professional assembly, installation and maintenance in accordance with national regulations and manufacturer's instructions as to SHEV Control Unit. The safety of the supplied product documentation are to be observed.



Strictly observe the information given in the SHEV Control Unit description when commissioning the **Wire Click**. Details can be found on our website: [www.aumueller-gmbh.de](http://www.aumueller-gmbh.de)

The instructions must be kept carefully for the entire service life of the product.

[www.aumueller-gmbh.de](http://www.aumueller-gmbh.de)

AUMÜLLER AUMATIC GMBH  
 Gemeindewald 11  
 86672 Thierhaupten  
 9000022301\_V0.1\_KW25/16

Tel. +49 8271 8185-0  
 Fax +49 8271 8185-250  
 info@aumuelle-gmbh.de