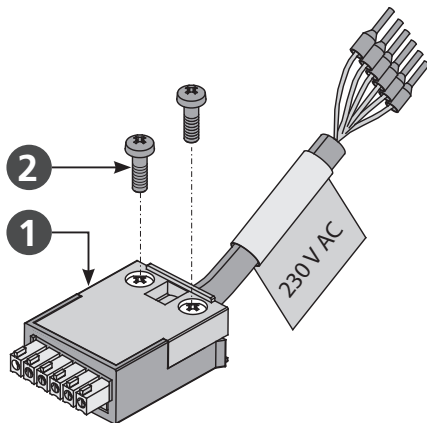


INSTRUCTION FOR INSTALLATION AND COMMISSIONING

Wire Click - 230V AC

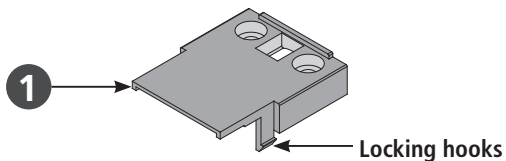
Wire Click enable the use of site-supplied cable. It simplifies assembly and the electrical connection of the drives.

- Loosen the screws ② and remove the housing cover ①.

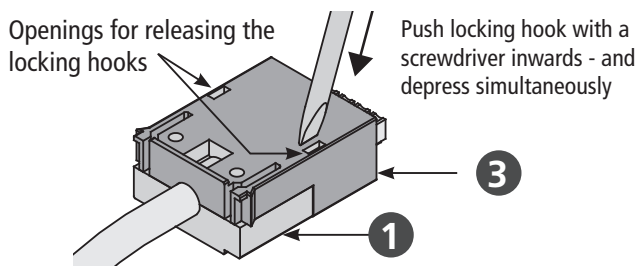


NOTE

Locking hooks - at the housing cover ① - prevent withdrawal of the plug under tensile load.



- On the underside of the plug housing ③ are two openings for releasing the locking hooks. Push locking hook with a screwdriver inwards - and depress simultaneously.



- Replace cable set - provided by the customer in place of connecting cable.
- Moung the housing cover ① with the both screws ②.

Connection assignment

Application: Unitary plug-solution for **AUMÜLLER** Click system.

Order number: 501273 - 3 m cable length - 230 V AC
501275 - 5 m cable length - 230 V AC
501280 - 10 m cable length - 230 V AC

Rated voltage: 230 V AC ($\pm 20\%$), max. 2 Vpp
Connecting cable: non-halogen, grey 6 x 0,75 mm²
Terminal: to 1,5 mm²

Function	Colour	DIN IEC 757
L1 (OPEN)	brown	BN
L2 (CLOSE)	black	BK
N	blue	BU
PE	green / yellow	GN / YE
(*)	grey	GY
(*)	white	WH

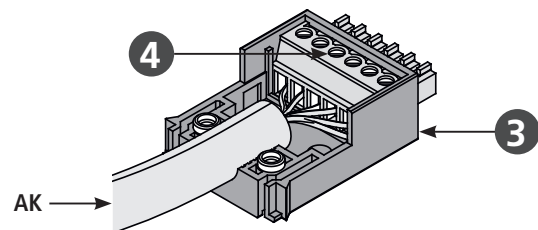


(*) Either feedback contact (version „Z“) or constant control (synchronous control)

NOTE

Terminals ④ to 1,5 mm².

The performances (especially the fire behavior) of locally provided cables, must be checked on own responsibility on compliance with the application-specific local regulations!



Warranty claims require proper and professional assembly, installation and maintenance in accordance with national regulations and manufacturer's instructions as to SHEV Control Unit. The safety of the supplied product documentation are to be observed.



Strictly observe the information given in the SHEV Control Unit description when commissioning the **Wire Click**. Details can be found on our website: www.aumueller-gmbh.de

The instructions must be kept carefully for the entire service life of the product.

www.aumueller-gmbh.de

AUMÜLLER AUMATIC GMBH

Tel. +49 8271 8185-0

Gemeindewald 11

Fax +49 8271 8185-250

86672 Thierhaupten

info@aumuelle-gmbh.de

9000022351_V0.2_KW 23 / 2023