

ORDER DATA

DM – Drive-Module

Application: For the controlling of drives, gas-pressure generators and magnetic locks.



TECHNICAL DATA (Rated values)

| | | |
|-----------------------|---|-------------|
| Operating voltage: | 24 V DC | 10 A |
| Output voltage: | 24 V DC (20 – 28 V DC / 0,5 Vpp) | |
| Internal consumption: | 5,3 mA | |
| Output current: | 10 A | |
| Housing (WxHxD): | 100 x 120 x 22,5 mm, ABS, black | |
| Module units: | 1 ME | |
| Inputs: | Vent. buttons (max. 10 pcs), feedback contact OPEN/CLOSE | |
| Outputs: | Drive line (gas-pressure generators / magnetic locks) | |
| Display: | Power, fault, alarm, running direction OPEN / CLOSE | |
| Control elements: | Front push button: OPEN / CLOSE | |
| Connections: | Plug-in terminals 1 mm ² (rigid wire), Drives: 2,5 mm ² , Blade terminals 6,3 mm: Power supply, socket and plug with cable for internal BUS | |

Features: Drive line monitoring, fixing on 35-mm mounting rail.
Configuration of the functional and performance features, which deviates from the standard systems via configuration software EMB8000.

VERSIONS

| Part.-No. | | | | | |
|-----------------|-----------------------|--------------------------------|--|--|--|
| 680250 | Delivery in parcel | for customer self-installation | | | |
| 680250-9 | Module factory fitted | factory fitted and fully wired | | | |

DMX – Drive-Module

Application: For the controlling of drives, gas-pressure generators and magnetic locks.



TECHNICAL DATA (Rated values)

| | | |
|-----------------------|--|-------------|
| Operating voltage: | 24 V DC | 20 A |
| Output voltage: | 24 V DC (20 – 28 V DC / 0,5 Vpp) | |
| Internal consumption: | 5,3 mA | |
| Output current: | 20 A | |
| Housing (WxHxD): | 100 x 120 x 45 mm, ABS, black | |
| Module units: | 2 ME | |
| Inputs: | Vent. buttons (max. 10 pcs), feedback contact OPEN/CLOSE | |
| Outputs: | Drive line (gas-pressure generators / magnetic locks) | |
| Display: | Power, fault, alarm, running direction OPEN / CLOSE | |
| Control elements: | Front push button: OPEN / CLOSE | |
| Connections: | Plug-in terminals 1 mm ² (rigid wire), Blade terminals 6,3 mm: Drives + power supply, socket and plug with cable for internal BUS | |

Features: Drive line monitoring, fixing on 35-mm mounting rail.
Configuration of the functional and performance features, which deviates from the standard systems via configuration software EMB8000.

Note: Drive output for blade terminals 6,3 mm!
Purchased parts package: 3 wires 2,5 mm², 400 mm length with blade terminals.
Terminals always have to be ordered separately! (See options)

VERSIONS

| Part.-No. | | | | | |
|-----------------|-----------------------|--------------------------------|--|--|--|
| 680255 | Delivery in parcel | for customer self-installation | | | |
| 680255-9 | Module factory fitted | factory fitted and fully wired | | | |

ORDER DATA

IDM - Intelligent-Drive-Module

Application: For operating intelligent **AUMÜLLER S12 / S3** drives up to max. **10 A** total current.



TECHNICAL DATA (Rated values)

| | | |
|-----------------------|--|-------------|
| Operating voltage: | 24 V DC | 10 A |
| Output voltage: | 24 V DC (20 – 28 V DC / 0,5 Vpp) | |
| Internal consumption: | 6 mA | |
| Output current: | 10 A | |
| Housing (WxHxD): | 100 x 120 x 22,5 mm, ABS, black | |
| Module units: | 1 ME | |
| Inputs: | Vent. buttons (max. 10 pcs), feedback contact OPEN/CLOSE 0 - 10 V analog input | |
| Outputs: | Drive line (AUMÜLLER S12 / S3) | |
| Display: | Power, fault, alarm, running direction OPEN / CLOSE | |
| Control elements: | Front push button: OPEN / CLOSE | |
| Connections: | Plug-in terminals 1 mm ² (rigid wire), Drives: 2,5 mm ² , Blade terminals 6,3 mm: Power supply, socket and plug with cable for internal BUS 0-10 V analog input | |

Features: Drive line monitoring, fixing on 35-mm mounting rail.
Configuration of the functional and performance features, which deviates from the standard systems via configuration software EMB8000.

VERSIONS

| Part.-No. | | | | |
|-----------------|-----------------------|--------------------------------|--|--|
| 680257 | Delivery in parcel | for customer self-installation | | |
| 680257-9 | Module factory fitted | factory fitted and fully wired | | |

SM – Sensor-Module

Application: For the connecting of automatic smoke detectors and breakglass punits.



TECHNICAL DATA (Rated values)

| | |
|------------------------|--|
| Operating voltage: | 24 V DC |
| Detector line voltage: | 24 V DC |
| Internal consumption: | 12,6 mA |
| Housing (WxHxD): | 100 x 120 x 22,5 mm, ABS, black |
| Module units: | 1 ME |
| Inputs: | 3 detector lines (max 10 detectors/line) Ventilation buttons (max. 10 pcs.) |
| Outputs: | 1 feedback contact (change-over switch, 42 V / 0,5A) |
| Display: | Power, fault, alarm |
| Control elements: | Front push button: Reset |
| Connections: | Plug-in terminals 1 mm ² (rigid wire), socket and plug with cable for internal BUS |

Features: Überwachte detector lines, fixing on 35-mm mounting rail.
Configuration of the functional and performance features, which deviates from the standard systems via configuration software EMB8000.

VERSIONS

| Part.-No. | | | | |
|-----------------|-----------------------|--------------------------------|--|--|
| 680150 | Delivery in parcel | for customer self-installation | | |
| 680150-9 | Module factory fitted | factory fitted and fully wired | | |

ORDER DATA

RM6 – Relay-Module

Application: For the transmitting of signals via volt free relay contacts.



TECHNICAL DATA (Rated values)

| | |
|-----------------------|---|
| Operating voltage: | 24 V DC |
| Internal consumption: | 5,3 mA |
| Housing (WxHxD): | 100 x 120 x 22,5 mm, ABS, black |
| Module units: | 1 ME |
| Outputs: | 6 volt free relay contacts (change-over switch, 42V / 0,5A) |
| Display: | Operating, Fault |
| Connections: | Plug-in terminals 1mm ² (rigid wire), socket and plug with cable for internal BUS |

Features: Fixing on 35-mm mounting rail.
Configuration of the functional and performance features, which deviates from the standard systems via configuration software EMB8000.

VERSIONS

| Part.-No. | | | | | |
|-----------------|-----------------------|--------------------------------|--|--|--|
| 680200 | Delivery in parcel | for customer self-installation | | | |
| 680200-9 | Module factory fitted | factory fitted and fully wired | | | |

IM-K – KNX-Module

Application: For communication between the **AUMÜLLER** control unit EMB8000 and the KNX-BUS-System.



TECHNICAL DATA (Rated values)

| | |
|-----------------------|---|
| Operating voltage: | 24 V DC |
| Internal consumption: | 6 mA |
| BUS current: | 9 mA |
| Data points: | up to 16 lines with up to 16 data points |
| Housing (WxHxD): | 100 x 120 x 22,5 mm, ABS, black |
| Module units: | 1 ME |
| Inputs: | 6 analog inputs KNX sided, 3 x potential free Relay contacts via KNX |
| Outputs: | KNX-BUS terminal |
| Display: | Operation, fault, KNX-programming LED |
| Control elements: | KNX-programming button |
| Connections: | Plug-in terminals 1mm ² (rigid wire), socket and plug with cable for internal BUS |

Features: Fixing on 35-mm mounting rail.
Configuration of the functional and performance features, which deviates from the standard systems via configuration software EMB8000, and an ETS-Software for KNX programming.

VERSIONS

| Part.-No. | | | | | |
|-----------------|-----------------------|--------------------------------|--|--|--|
| 680265 | Delivery in parcel | for customer self-installation | | | |
| 680265-9 | Module factory fitted | factory fitted and fully wired | | | |

ORDER DATA

WM – Weather-Module

Application: For the connecting of weather sensors.



TECHNICAL DATA (Rated values)

| | |
|------------------------|---|
| Operating voltage: | 24 V DC |
| Detector line voltage: | 24 V DC |
| Internal consumption: | 13,0 mA |
| Housing (WxHxD): | 100 x 120 x 22,5 mm, ABS, black |
| Module units: | 1 ME |
| Inputs: | Wind- and rain sensors, wind direction sensor, external signals |
| Outputs: | Volt free contact (change-over switch, 42 V / 0,5A) |
| Display: | Power, fault, wind / rain activ |
| Connections: | Plug-in terminals 1,5 mm ² (rigid wire) |

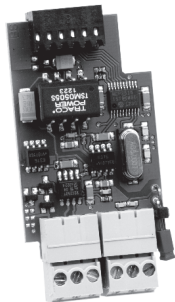
Features: Fixing on 35-mm mounting rail.
Configuration of the functional and performance features, which deviates from the standard systems via configuration software EMB8000.

VARIANTEN

| Part.-No. | | | | | |
|-----------------|-----------------------|--------------------------------|--|--|--|
| 680180 | Delivery in parcel | for customer self-installation | | | |
| 680180-9 | Module factory fitted | factory fitted and fully wired | | | |

CAN-Module

Application: For the integrating of various EMB8000 into a CAN-BUS network.



TECHNICAL DATA (Rated values)

| | |
|----------------------------|--|
| Operating voltage: | 24 V DC (+/- 20%) |
| Ambient temperature range: | -5°C ... + 40°C |
| Housing: | without ((assembled PCB) |
| Dimensions (WxHxD): | 20 x 32 x 13 mm |
| Connections: | Plug-in terminals 6 x 1,0 mm ² (rigid wire) |

Features: Connector for plugging the network card into the Control-Module (CM).
Configuration of the functional and performance features, which deviates from the standard systems via configuration software EMB8000.
Module is required in every networking control unit.

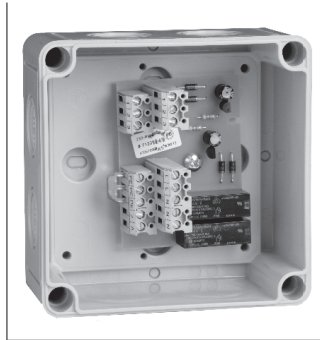
VARIANTEN

| Part.-No. | | | | | |
|-----------------|-----------------------|--|--|--|--|
| 680190 | Delivery in parcel | for customer self-installation | | | |
| 680190-9 | Module factory fitted | factory fitted and fully wired. Terminals installed and fully wired on 35-mm mounting rail. | | | |

ORDER DATA

Relay interface

Application: Relay for the connection of 230 V AC drives to a 24 V DC drive line, triggering by pole change of 24 V DC drive line.



TECHNICAL DATA (Rated values)

| | |
|----------------------------|--|
| Operating voltage: | 24 V DC, +/-20% (max. 2 Vpp) |
| Standby consumption: | <100 mA |
| Switching capacity: | 230 V AC / 3 A |
| Drive type: | S2, S3, S12, MP |
| Ambient temperature range: | 0 ... +70 °C |
| Housing: | Surface mounting, plastic, white |
| Dimensions (WxHxD): | 98 x 98 x 58 mm |
| Connections: | Screw terminals 4,0 mm ² (rigid wire) |
| Protection rating: | IP54 |

Feature/Equipment

- Connection to the **drive line** of SHEV or natural ventilation control units

VERSIONS

| Part.-No. | | | | | |
|-----------------|-----------------------|--|--|--|--|
| 670071 | Delivery in parcel | for customer self-installation | | | |
| 670075-9 | Module factory fitted | factory fitted and fully wired. Including 5 terminals 4,0 mm ² | | | |

TERMINALS

| Part.-No. | | | | | |
|-----------------|---------------------------------------|--------------------------------|--|--|--|
| 659941 | Terminals-Set 5 x 2,5 mm ² | for customer self-installation | | | |
| 659942 | Terminals-Set 5 x 6,0 mm ² | for customer self-installation | | | |
| 659943 | Terminals-Set 5 x 10 mm ² | for customer self-installation | | | |
| 659944 | Terminals-Set 5 x 16 mm ² | for customer self-installation | | | |
| 659945-9 | Terminal 1 x 2,5 mm ² | factory fitted and fully wired | | | |
| 659946-9 | Terminal 1 x 6,0 mm ² | factory fitted and fully wired | | | |
| 659947-9 | Terminal 1 x 10 mm ² | factory fitted and fully wired | | | |
| 659948-9 | Terminal 1 x 16 mm ² | factory fitted and fully wired | | | |

CIRCUIT DIAGRAM

| Part.-No. | | | | | |
|------------|---------------|---|--|--|--|
| 240 | Plan creation | Wiring diagram per SHEV / ventilation group | | | |

10 A

20 A

ACCESSORIES

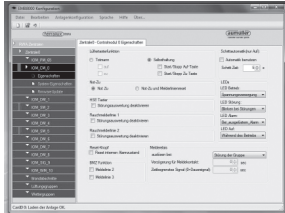
| Part.-No. | | VE | | | |
|---------------|---------------------------|---------|--|--|--|
| 500001 | Wall fixing brackets IP54 | 4 piece | | | |

ORDER DATA

Part.-No.

Software licence EMB8000

Application: Software licence for configuration, integration in networks and maintenance of EMB8000.



TECHNICAL DATA

System requirements:

Window 7 / 10

Feature/Equipment

- Free updates within licence period
- **AUMÜLLER** grants licences only after attending a product training

SOFTWARE / LICENSE / PROGRAMMING

Technician Permanent Basic (licence not linked to control unit)

| | | | | |
|---|---------------|--|--|--|
| TPB-1M – Licence for 1 month | 680911 | | | |
| TPB-3J – Licence for 3 years | 680913 | | | |
| Factory fitted preprogramming of EMB 8000 | | | | |
| Configuration of customized functions at the factory for one Control Unit | 680930 | | | |

ORDER DATA

Part.-No.

Accumulators

Application: Maintenance of standby operation of SHEV control units over a period of 72 hours of main power supply loss.



TECHNISCHE DATEN

| | |
|-----------------|---|
| Type: | Lead storage battery |
| Output voltage: | 12 V DC |
| Capacity: | see order data |
| Lifetime: | 4 years (normal conditions) |
| Connections: | 1,2 – 12 Ah: blade terminals 4,8 mm 17 – 38 Ah: screw terminals M5 |
| Housing: | plastic, impact- and break-resistant |

Feature/Equipment

- Maintenance free operation, long lasting durability, high charging performance and long-cycle stability
- Disposal due to local, national or international rules (WEEE)

NOTE: Always 2 batteries are required per control unit!

OPTIONS

for control units with backup power supply

| | | | | | |
|------------------|--------|--------|--|--|--|
| 1,2 Ah, 12 V | 1 Pcs. | 540000 | | | |
| 2,2/2,3 Ah, 12 V | 1 Pcs. | 541000 | | | |
| 7 Ah, 12 V | 1 Pcs. | 542000 | | | |
| 12 Ah, 12 V | 1 Pcs. | 542200 | | | |
| 17 Ah, 12 V | 1 Pcs. | 543000 | | | |
| 24 Ah, 12 V | 1 Pcs. | 544000 | | | |
| 38 Ah, 12 V | 1 Pcs. | 545000 | | | |